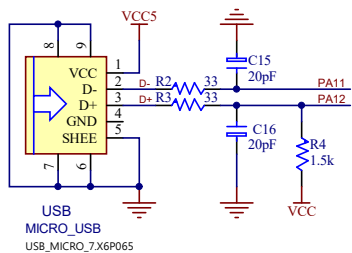
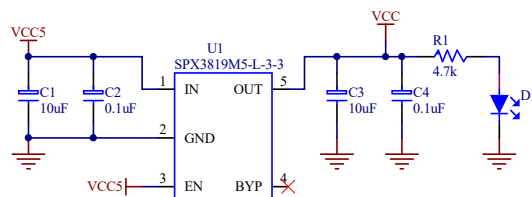


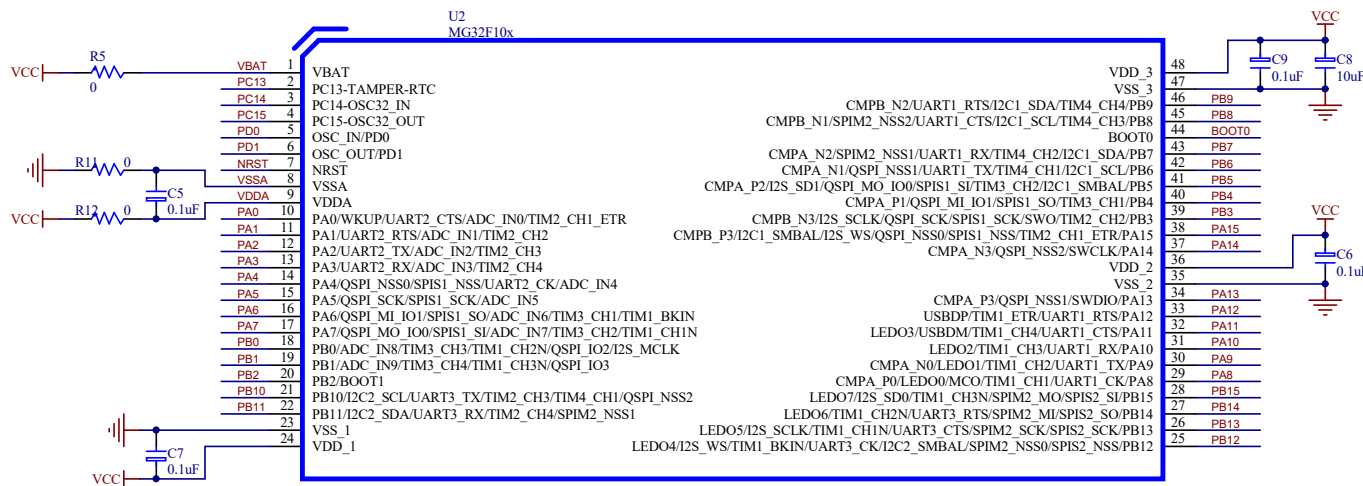
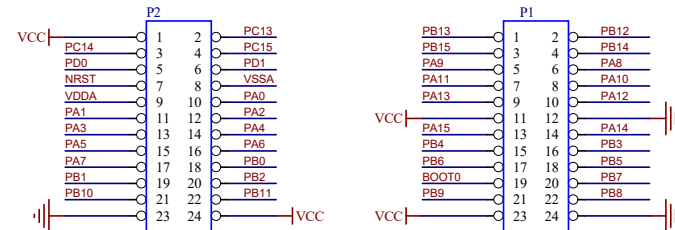
USB接口



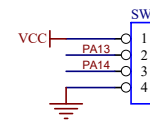
電源電路



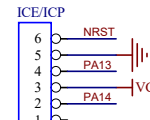
IO排針



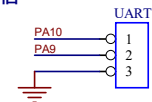
SWD調試接口



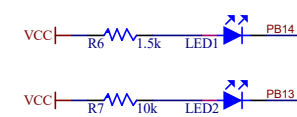
ICP接口



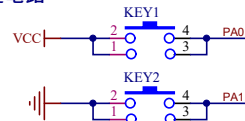
串口通信



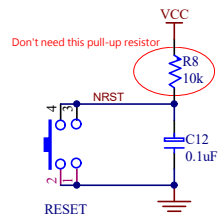
LED 指示燈



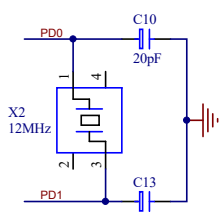
按鍵電路



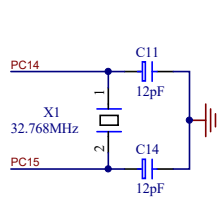
復位電路



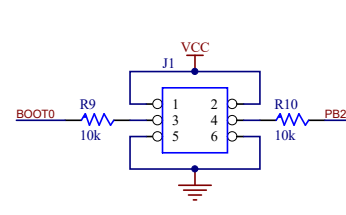
12MHz 晶振電路



32.768MHz 晶振電路



啟動選擇



2023-09-28

TH226A_MG32F10x_LQFP48_EV_V10 大陸LAYOUT

- 1. 在原 foot print : MICRO-USB-SMD_5P-P0.65-H-F_C10418 加上: USB_MICRO_7.X6P065(建倚MRUSB-5B-D17xx-S347) 雙lay 同TH242B
- 2. 請協助將這三個資料夾裡TH226A TH227A TH236A的電路圖增加一個MLink 6 pin排針母座ICE/ICP，並修改到PCB(注意方向)。
PA13 = SWDIO/ICP_SDA。
PA14 = SWCLK/ICP_SCL

檔名請進版到THxxxB。

TH227A & TH236A的VDD走線請修改成先經過C9，再接到IC的電源腳

2023-10-11

sch.pdf >> sch.AD file

Title			
Size	Number		Revision
A4			
Date:	2023/10/11		Sheet of
File:	D:\DXP\.\TH226B-NOTE.SchDoc		Drawn By: