

megawin

OCD32_MLink

User Manual

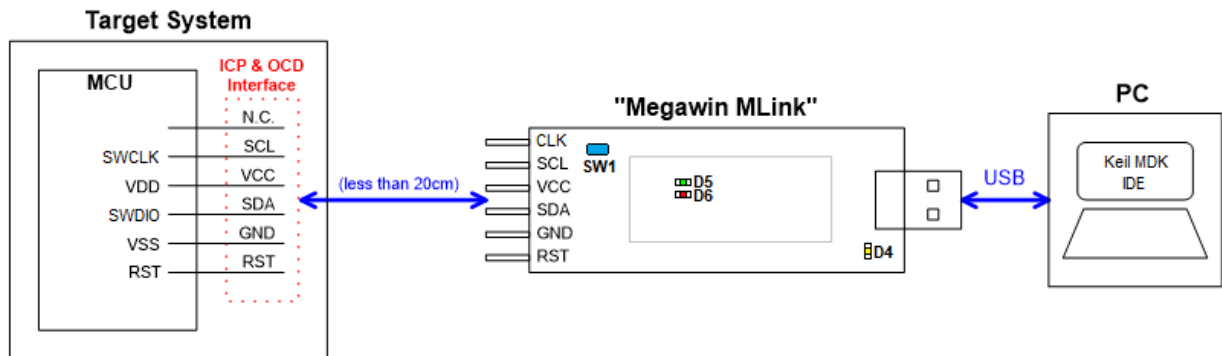
Index

Index.....	2
1. Introduction	3
2. Setup MLink and Pack for Keil MDK.....	4
3. Update Programmer	10
4. Update Target	16
5. Note	17
6. Revision History	18

1. Introduction

OCD32_MLink is an ICE tool used by megawin in Keil MDK. It supports only Cortex®-M0 series chips of megawin. This development kit provides OCD (On-Chip-Debug) real-time debugging function. In addition, the “ICP32_Programmer.exe” provided in the package is a software designed for megawin’s MLink. Users can update the application code under the software tool without removing the mounted MCU chip from the actual end product. In addition, because the programming data to be programmed to the target can be saved in the non-volatile storage of MLink, this stand-alone programmer is able to work without host (PC) intervention. This feature is especially useful in the field without a PC. Users only need to reserve 5 pins such as SWDIO, SWCLK, VCC, GND and RST to connect to MLink.

PS. The VCC pin of MLink does not provide power to the target board, the users need to provide the power by himself.



(Figure 1)

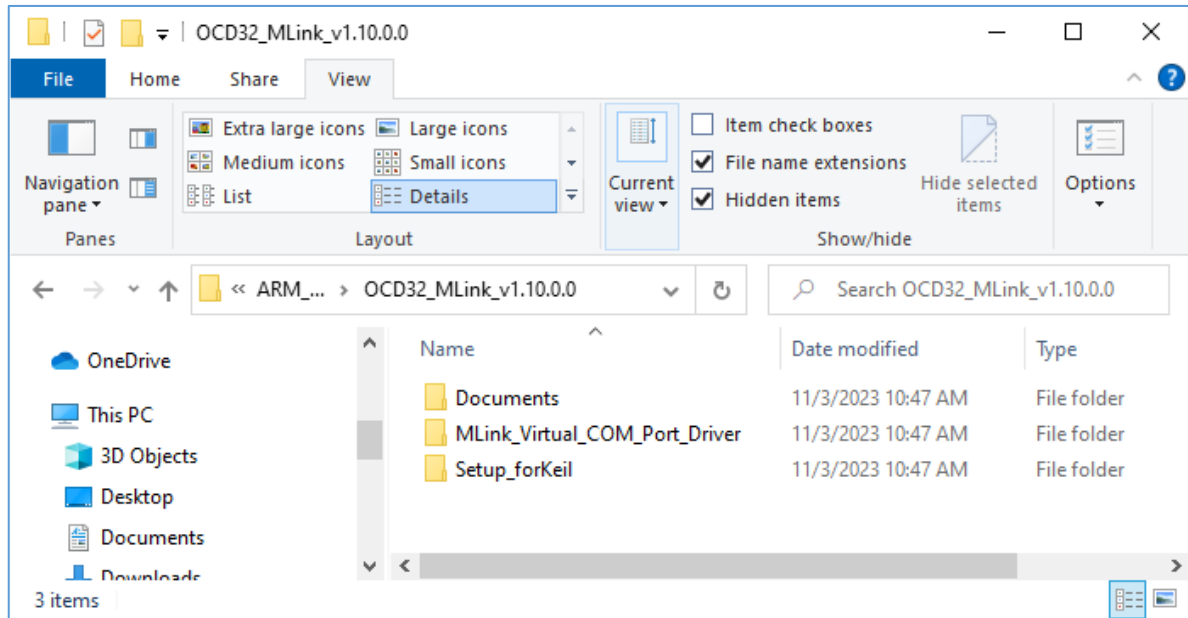
Light display	Always on	Always off	Flashing
D4	USB connection is normal	USB connection is not normal ^{*1}	
D5	1. Device initialization is normal 2. Programming the result is Pass		Programming in offline mode
D6	1. Device initialization is not normal ^{*2} 2. Programming the result is Fail		Programming in offline mode

PS1. When the USB connection is not normal, please check whether the power supply is normal and whether the system has recognized the device.

PS2. The device initialization is abnormal, indicating that the offline mode content is incorrect. Please set up the offline mode again.

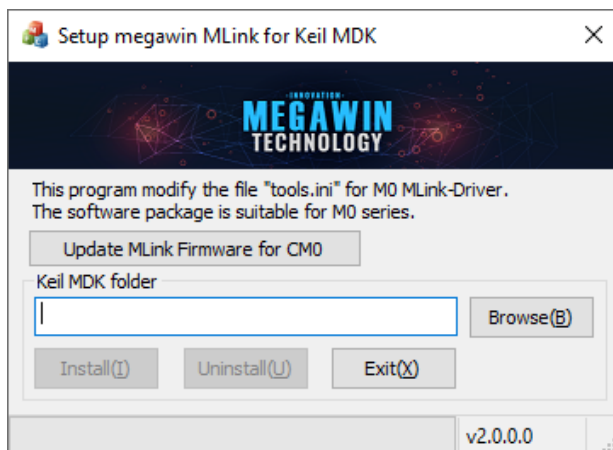
2. Setup MLink for Keil MDK

2.1. Install the package , there are some folders as figure 2.



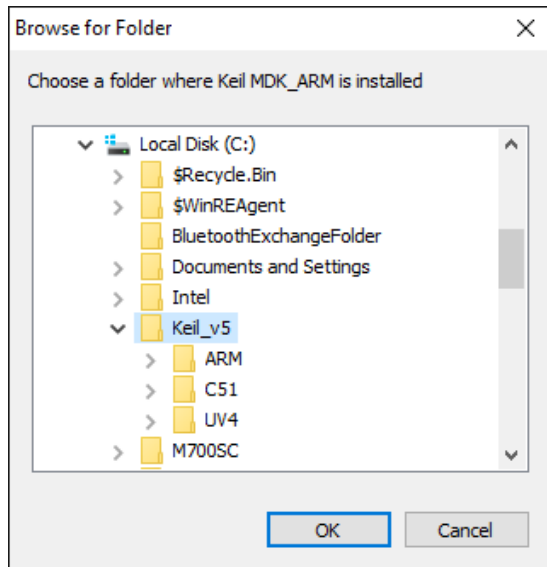
(Figure 2)

2.2. Please execute the “**SetupforKeilMDK.exe**” in “**Setup_forKeil**”, the program will show as figure 3. User can press button called “**Update MLink Firmware for CM0**” to update firmware.

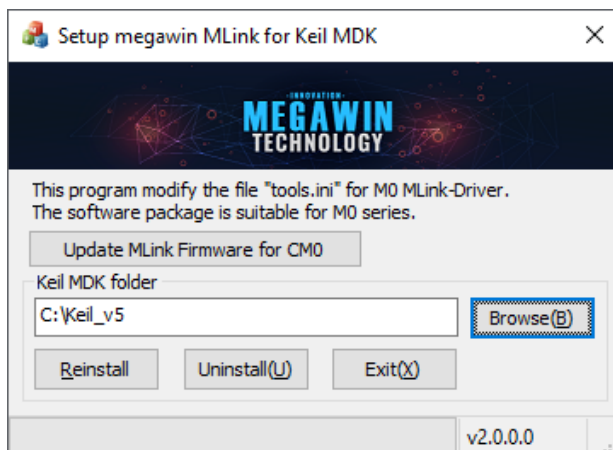


(Figure 3)

2.3. Click the **“Browse”** button to select the root directory of Keil MDK (only available for MDK4 and MDK5) as figure 4 and click **“OK”**, then it will be as figure 5.

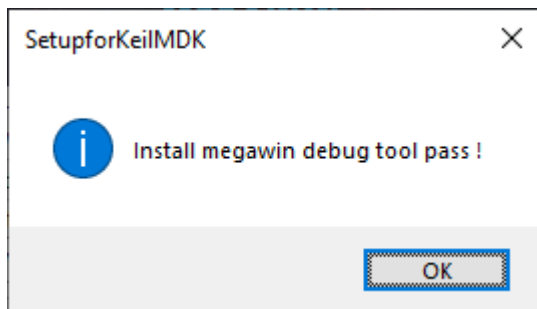


(Figure 4)



(Figure 5)

2.4. Click **"Install"** button, the application will add configuration in the file of **"tools.ini"**



(Figure 6)

2.5. Click **"OK"** button, when it is completed.

2.6. Click **"Exit"** to finish the install procedure.

2.7. Execute **"UV4.exe"** and open the sample project **"Standard_Project"**

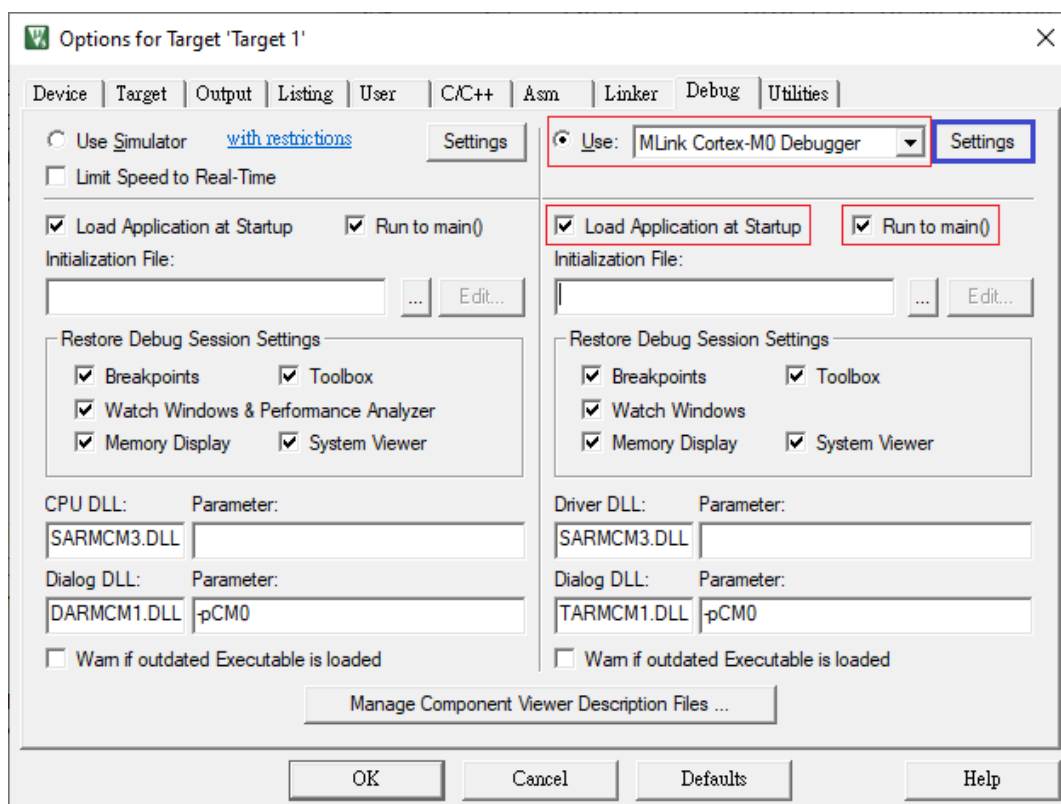
2.8. Click the menu of **"Project"** and select **"Options for Target 'Target 1'..."**.

2.9. Select the **"Debug"** tag as figure 7.

2.9.1. Select **"MLink Cortex-M0 Debugger"**

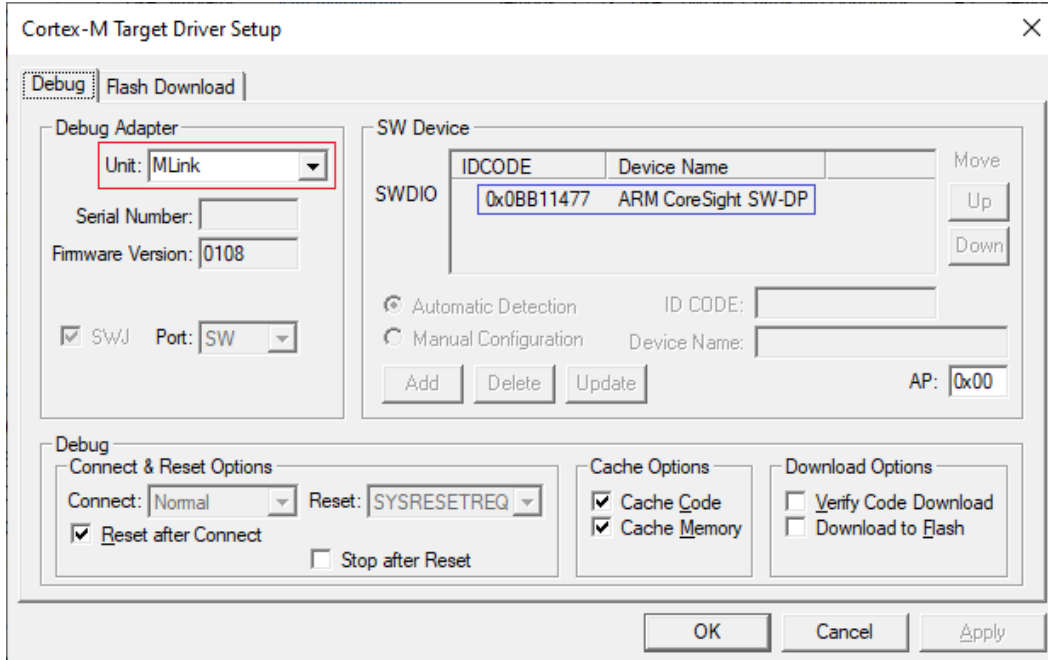
2.9.2. Check **"Load Application at Startup"**.

2.9.3. Check **"Run to main()"**.



(Figure 7)

2.10. Reference to figure 7, click the “**Setting**” button, another dialog will show as figure 8. Configure the debug adapter as figure 8. If the hardware are working, there will be a SW Device shows in list control on the right side of the dialog.



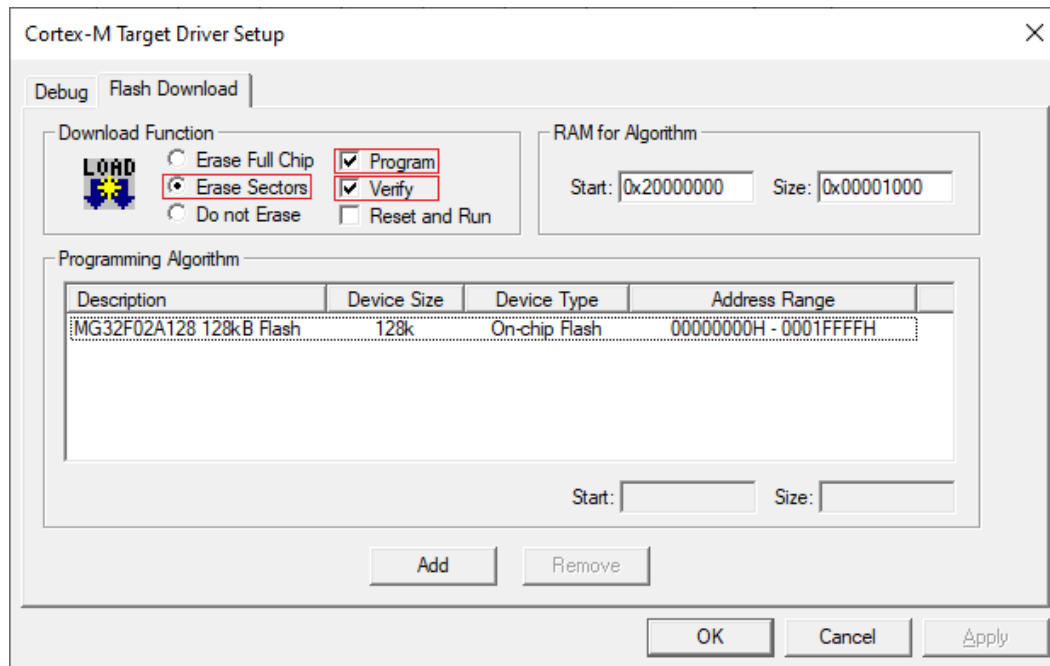
(Figure 8)

2.11. Click the tag of “Flash Download” as figure 9.

2.11.1. Click “Erase Sectors”

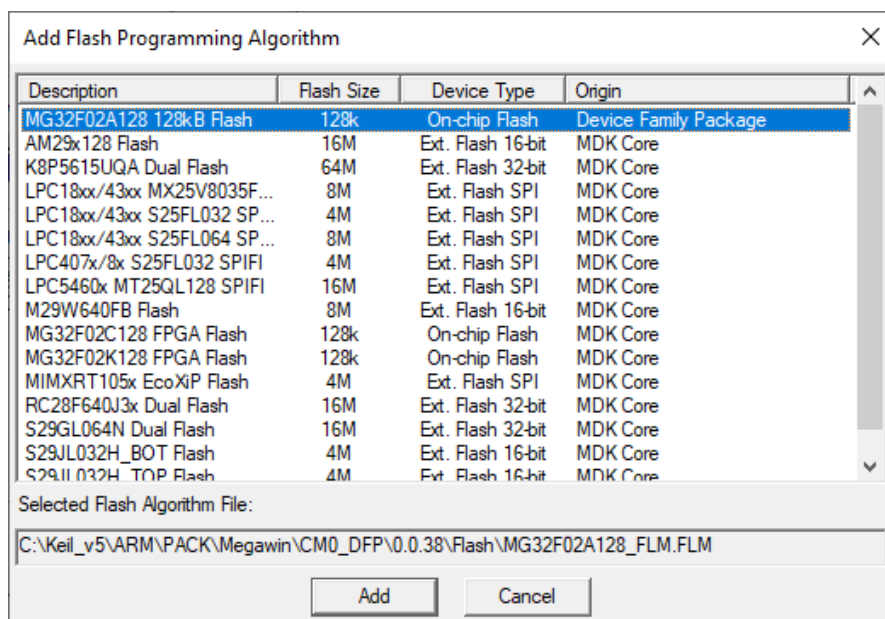
2.11.2. Check “Program” and “Verify”

2.11.3. Click “OK” button



(Figure 9)

If program algorithm is not showed as figure 9, please click “Add” to select the flash programming algorithm as figure 10



(Figure 10)

2.12. Rebuild the sample project “Standard_Project”

2.13. Click the menu of “Flash” and select “Download”.

2.14. Start to debug the project.

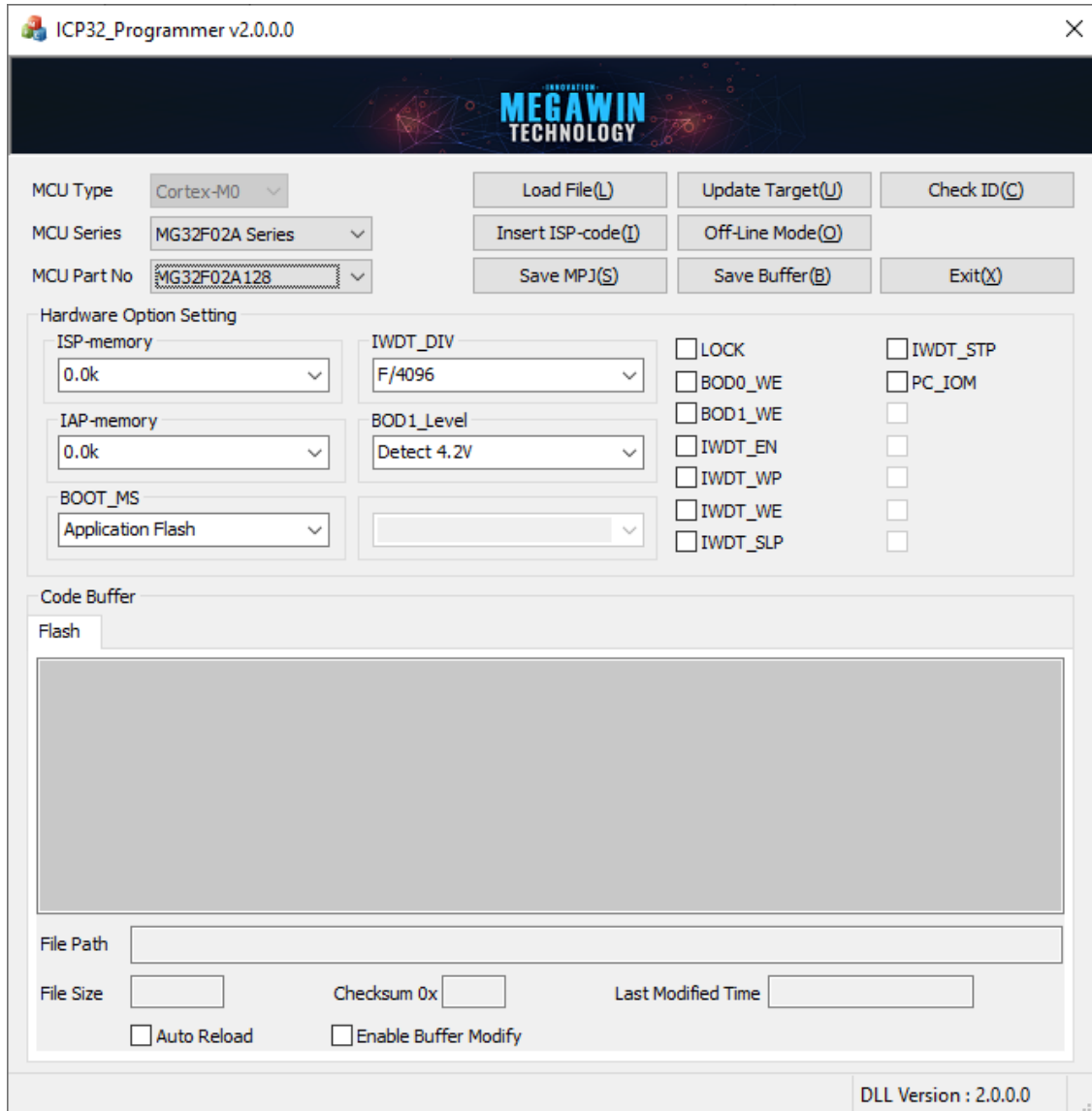
Note 1 : Before using MLink at the first time. Please execute “**ICP32_Programmer.exe**” and press “**Check ID**” to update the firmware of MLink

Note 2 : When the chip is locked, we can’t run in debug mode with MLink in Keil IDE.
Please execute “**ICP32_Programmer.exe**” and click “**Update Target**” to unlock the chip.

3. Update Programmer

The following figure shows the graphic user interface of the PC-site application program. The following sections will demonstrate how this tool can be used very easily.

Step 1: Choose a “MCU Series” and then choose the “MCU Part No”.

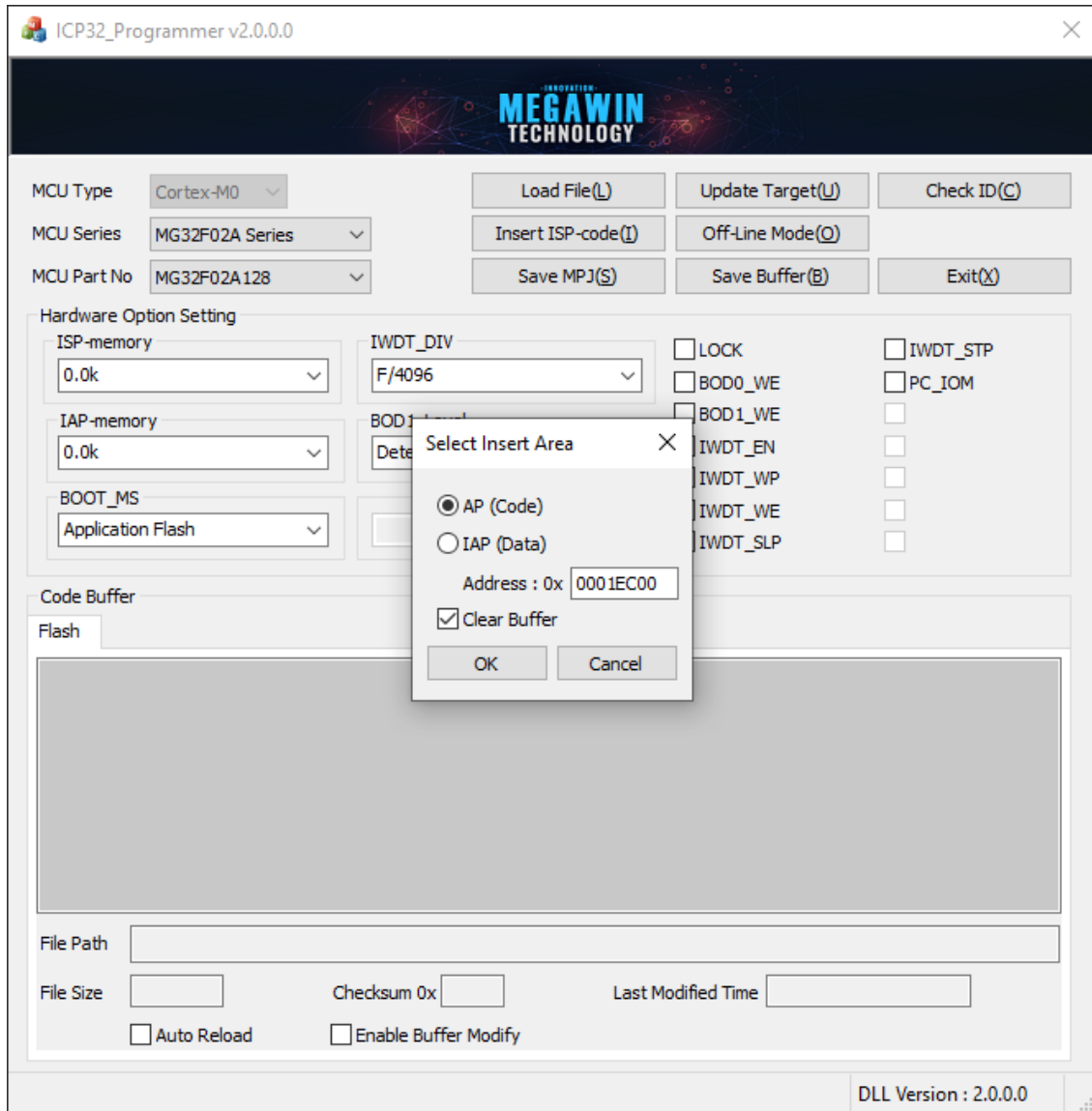


(Figure 11)

Note 1 : Auto Reload : When the application is from inactive to active. The code buffer will be reload.

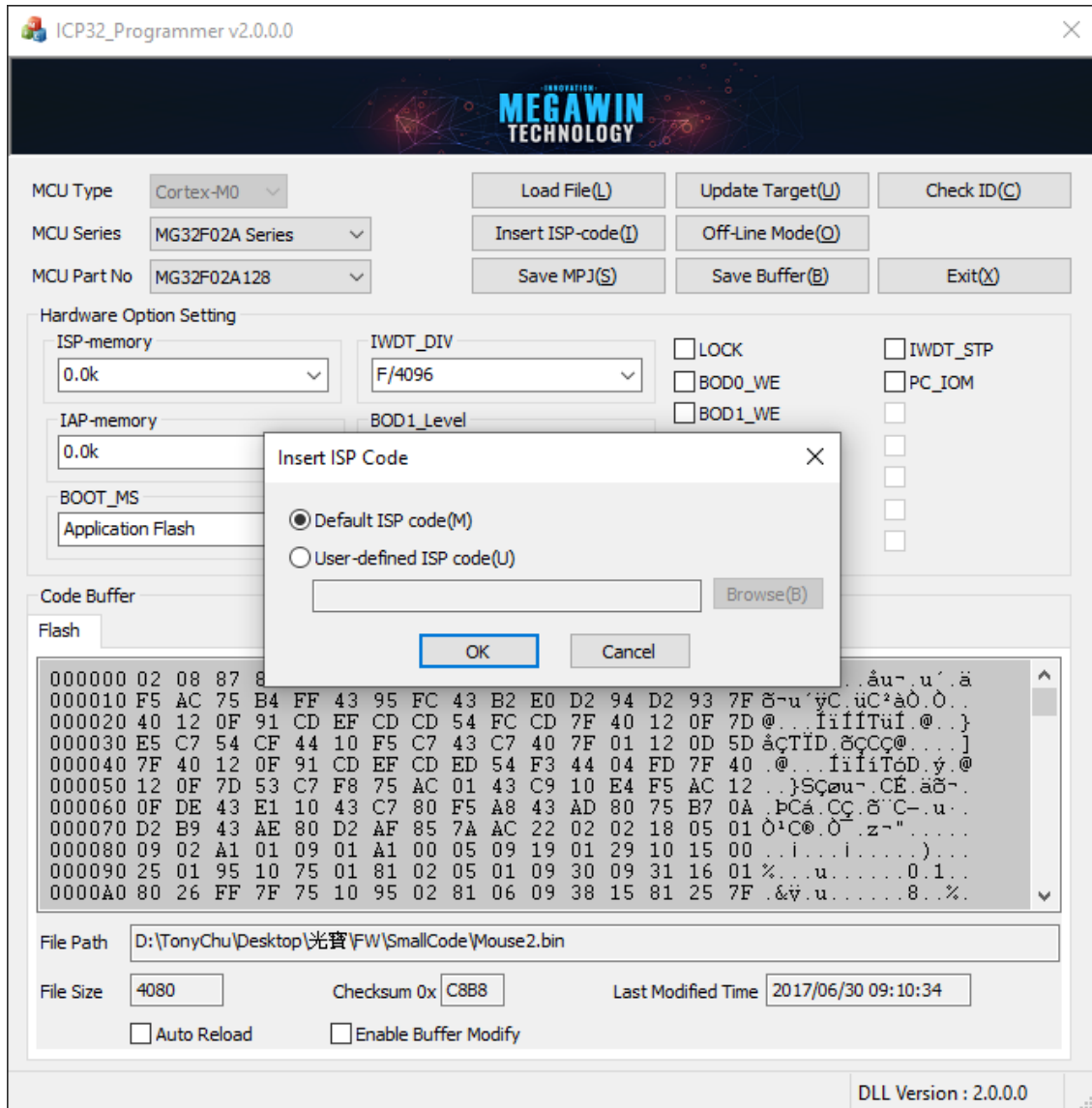
Note 2 : Enable Buffer Modify : User can modify the code buffer directly with keyboard.

Step 2 : Click “Load File” to select a file then choose loading AP(Code) or IAP(Data). “Load File” can be clicked repeatedly to load different files. While loading IAP(Data), user have to key in address. HEX and BIN data formats are supported for file loading.



(Figure 12)

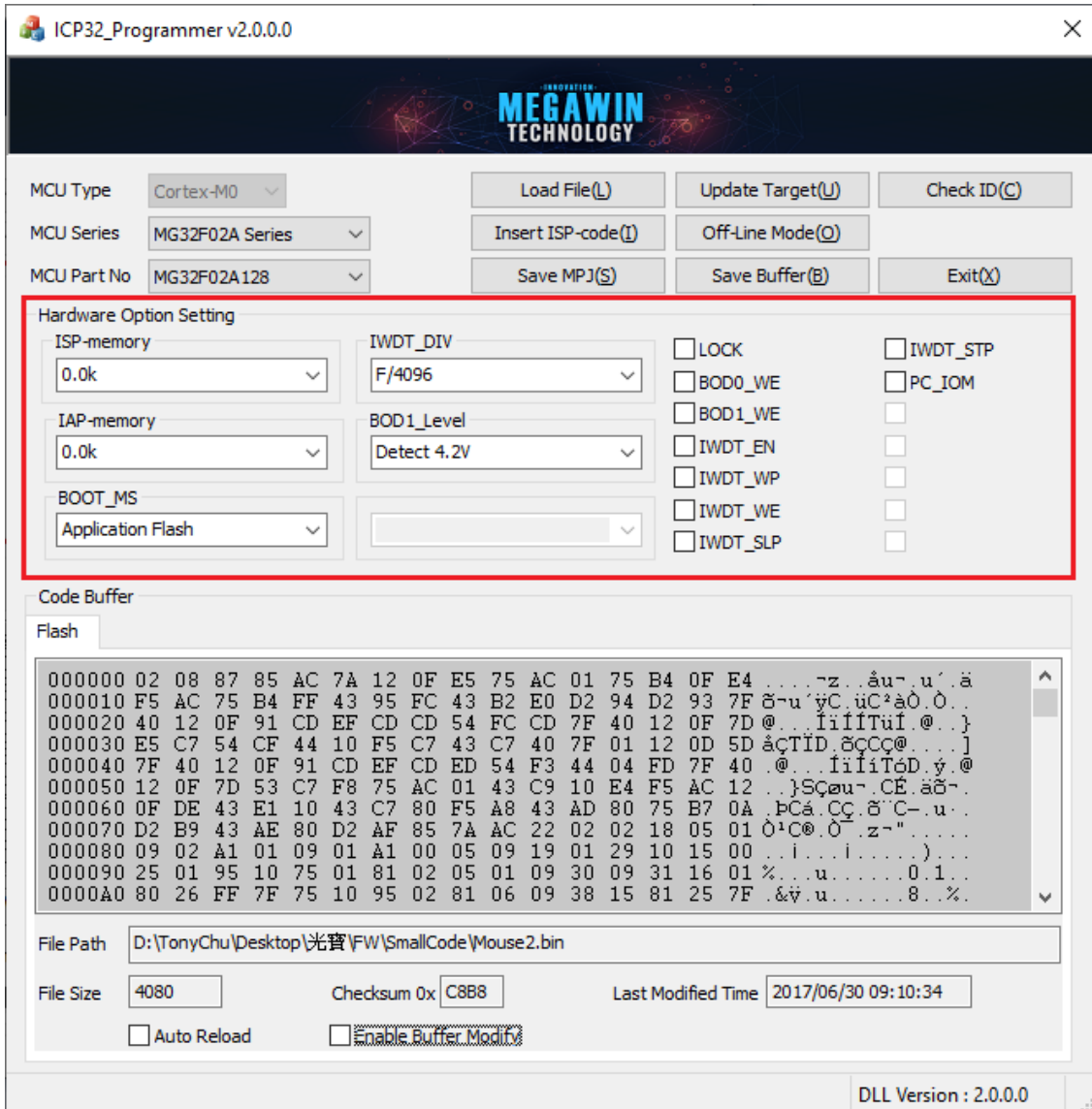
Step 3: Click “Insert ISP-Code” may choose to insert megawin-provided ISP code or User-defined ISP Code. If ISP function is not needed, Step 3 can be omitted.



(Figure 13)

Step 4: H/W Option setting

The hardware option defines the chip default behavior those are not volatile after power off. For details of the hardware options, please refer to user guide.



ICP32_Programmer v2.0.0.0

MCU Type: Cortex-M0
 MCU Series: MG32F02A Series
 MCU Part No: MG32F02A128

Buttons: Load File(L), Update Target(U), Check ID(C), Insert ISP-code(I), Off-Line Mode(O), Save MPJ(S), Save Buffer(B), Exit(X)

Hardware Option Setting

ISP-memory: 0.0k
 IAP-memory: 0.0k
 BOOT_MS: Application Flash

IWDT_DIV: F/4096
 BOD1_Level: Detect 4.2V

Options:

- ☐ LOCK
- ☐ BOD0_WE
- ☐ BOD1_WE
- ☐ IWDT_EN
- ☐ IWDT_WP
- ☐ IWDT_WE
- ☐ IWDT_SLP
- ☐ IWDT_STP
- ☐ PC_IOM

Code Buffer

Flash

```

000000 02 08 87 85 AC 7A 12 0F E5 75 AC 01 75 B4 0F E4 ...z...â-u'..ä
000010 F5 AC 75 B4 FF 43 95 FC 43 B2 E0 D2 94 D2 93 7F 8-u'ýC.üC²àÖ.Ö..
000020 40 12 0F 91 CD EF CD CD 54 FC CD 7F 40 12 0F 7D @...IiifTufi.@...}
000030 E5 C7 54 CF 44 10 F5 C7 43 C7 40 7F 01 12 0D 5D âçTID.8çCç@...]
000040 7F 40 12 0F 91 CD EF CD ED 54 F3 44 04 FD 7F 40 .@...IiifTôD.ý.@
000050 12 0F 7D 53 C7 F8 75 AC 01 43 C9 10 E4 F5 AC 12 ...}Sçøur..CÉ.äö~.
000060 0F DE 43 E1 10 43 C7 80 F5 A8 43 AD 80 75 B7 0A .pCá.Cç.8'C-u..
000070 D2 B9 43 AE 80 D2 AF 85 7A AC 22 02 02 18 05 01 0¹C@.Ö..z~".....
000080 09 02 A1 01 09 01 A1 00 05 09 19 01 29 10 15 00 ..i.....)....
000090 25 01 95 10 75 01 81 02 05 01 09 30 09 31 16 01 %...u.....0.1..
0000A0 80 26 FF 7F 75 10 95 02 81 06 09 38 15 81 25 7F .&ÿ.u.....8..%.
  
```

File Path: D:\TonyChu\Desktop\光寶\FW\SmallCode\Mouse2.bin

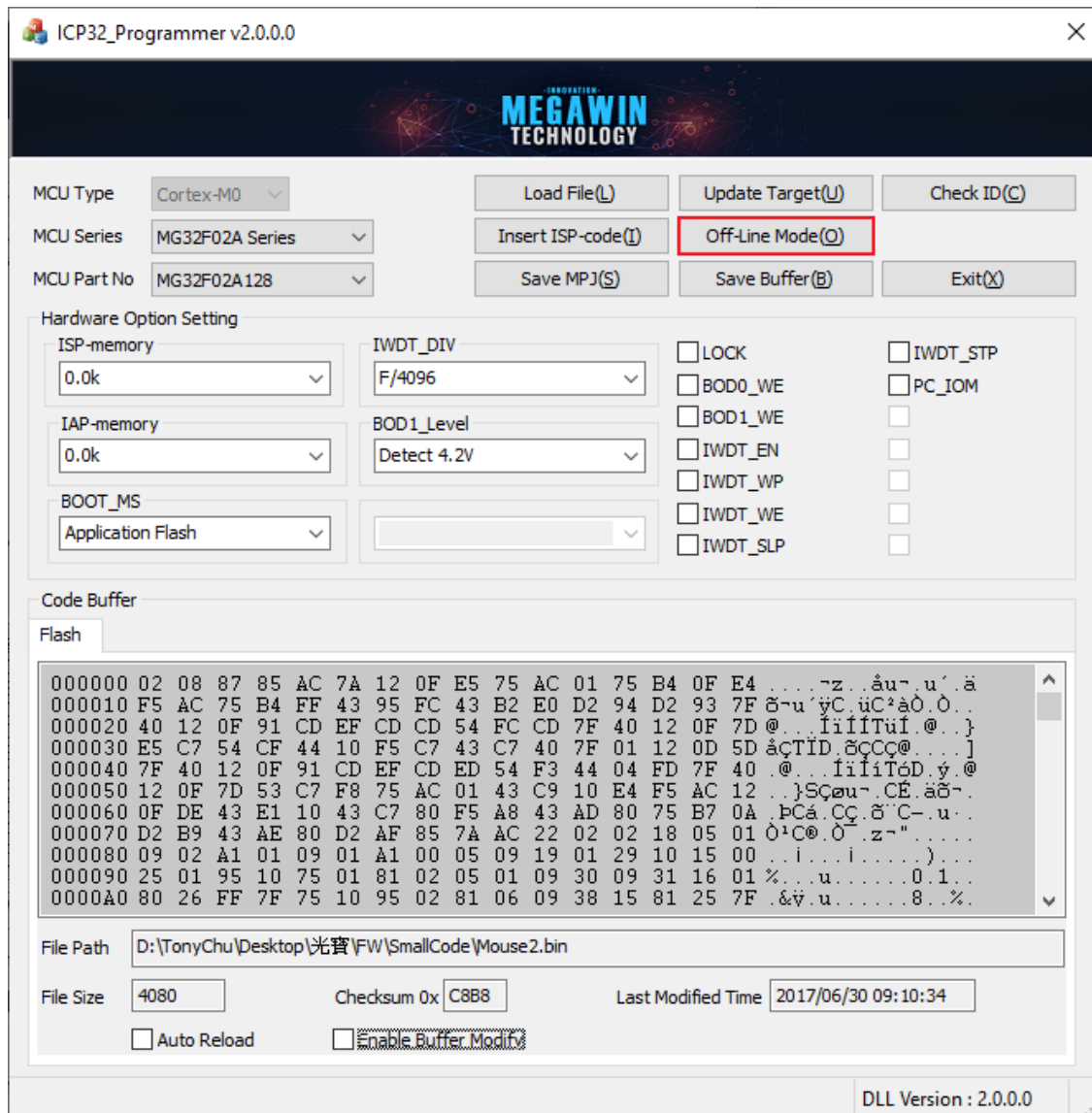
File Size: 4080 Checksum 0x: C8B8 Last Modified Time: 2017/06/30 09:10:34

☐ Auto Reload ☐ Enable Buffer Modify

DLL Version : 2.0.0.0

(Figure 14)

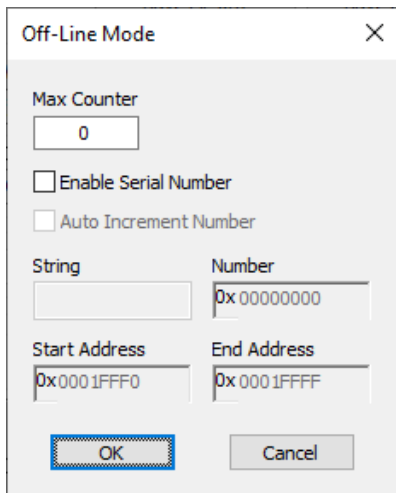
Step 5: Click “Off-Line Mode” to download programming data to the MLink.



(Figure 15)

Step 6: Setup “Max Counter” and “Serial Number”.

The “Max Counter” will be used to limit the number of off-line programming. The “Serial Number” will be programmed along with the code. If the function is not needed, just press “OK” to update the MLink.



The image shows a dialog box titled "Off-Line Mode" with a close button (X) in the top right corner. Inside the dialog, there are several fields and checkboxes. At the top, there is a "Max Counter" field with the value "0". Below it are two checkboxes: "Enable Serial Number" and "Auto Increment Number", both of which are currently unchecked. Further down, there are two columns of fields. The first column has a "String" field (empty) and a "Start Address" field containing "0x0001FFF0". The second column has a "Number" field containing "0x00000000" and an "End Address" field containing "0x0001FFFF". At the bottom of the dialog are two buttons: "OK" and "Cancel". The "OK" button is highlighted with a blue dashed border.

(Figure 16)

How to use the Serial Number :

- (1) Enable the Serial Number function and totally 16 bytes. (12 bytes for **String** and 4 bytes for **Number**) will be used.
- (2) Totally 12 bytes for the **String** and it could be used for manufactory or product string
- (3) Totally 4 bytes for the **Number** and the value could be from 0x00000000 to 0xFFFFFFFF.
- (4) The Number (as set in step 3) will be automatically added one when finish the “Download”.
- (5) **Start Address** for the Serial Number. It is limited from the chip size minus sixteen, please make sure this range from start to end is unused.

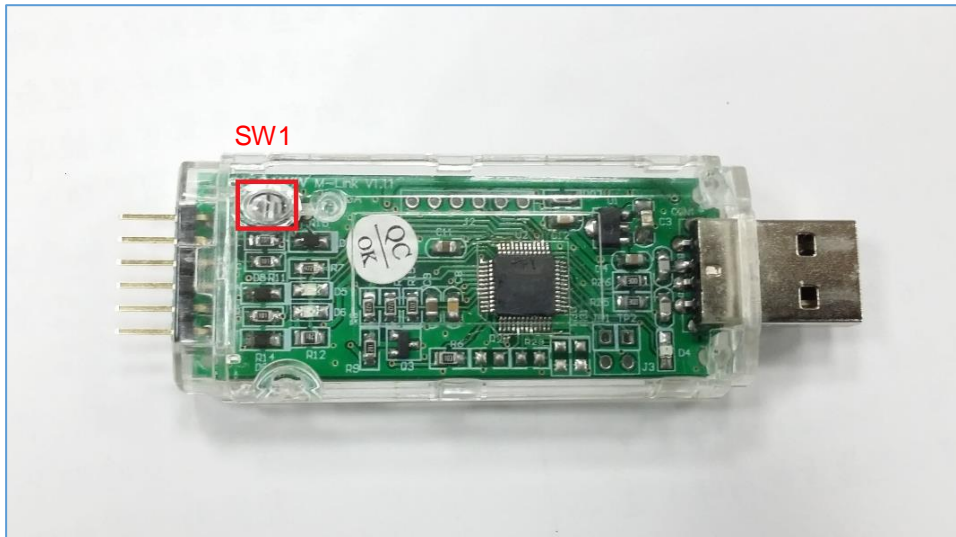
4. Update Target

How to update the target? User may:

4.1. Click “**Update Target**” to program on-line update, referring to steps 1 through 4 of 3.

Update Programmer, or

4.2. Click “**SW1**” of MLink to program off-line update, referring to 3. Update Programmer.



(Figure 17)

5. Note

5.1. After using ICP32_Programmer to update the target, the chip normally is unlock.

5.2. When the applications are using more I/O, it may configure the PC4, PC5 and PC6 as GPIO. But these 3 PINs are also using for the communication for MLink and target chip. After program PC4, PC5 and PC6 as GPIO, it will disable SWD interface, and it will disconnect the debug mode (ICE).

And due to SWD interface is disabled, the ICP function will also be disabled too. In this case, we suggest to finish all other function debug in your project and then test PC4, PC5 and PC6 GPIO function without debug mode. When you want to reload the code after modify to do the retest, it should follow the steps show in following:

5.2.1. Power off the target chip

5.2.2. Press and hold the reset button (RSTN/PC6 Pin) on the target board

5.2.3. Power on the target chip

5.2.4. Click “Update Target” in ICP32 Programmer AP, and release the Reset button after two seconds.

6. Revision History

Revision	Description	Date
v2.00	New version of application release. Support MLink Hardware V14 and V16.	2024/09/26
v2.10	Add support MG32F04A016, MG32F04P032	2024/11/01
v2.20	Fix the start address check mechanism issue in off-line mode	2024/11/29