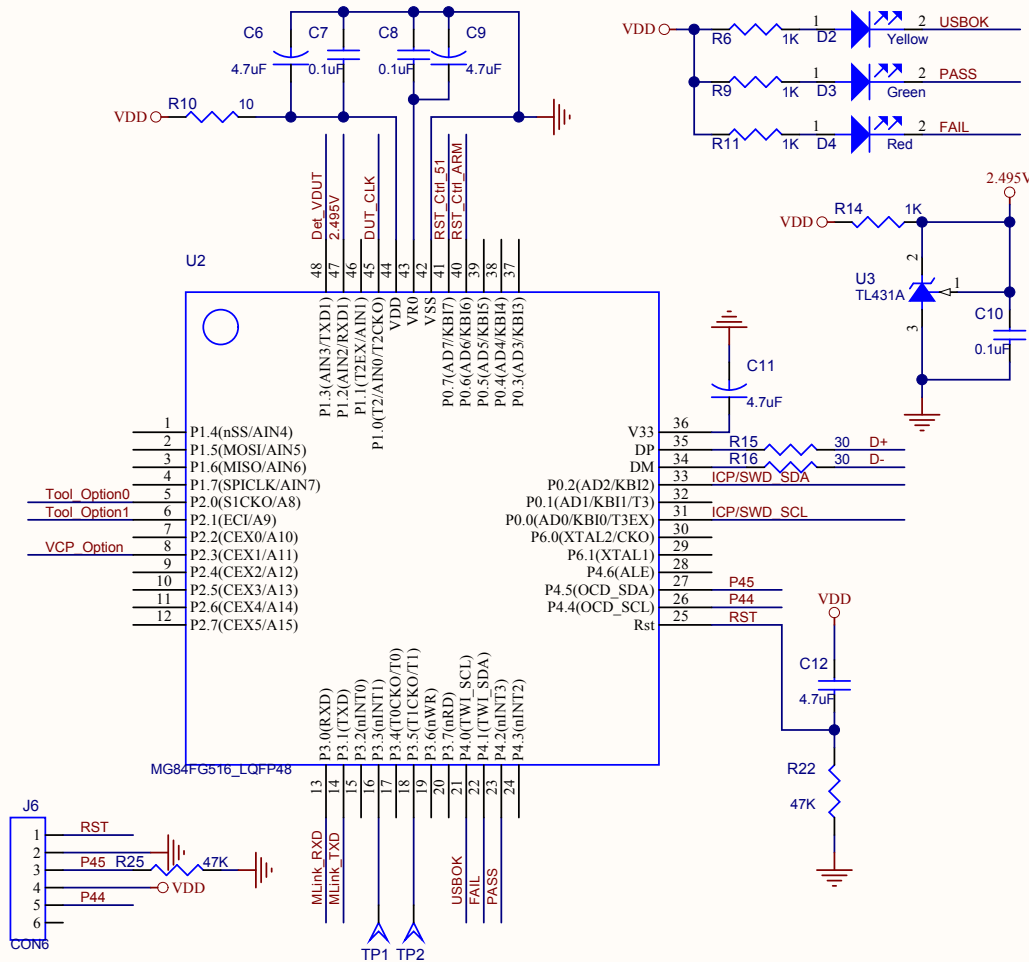
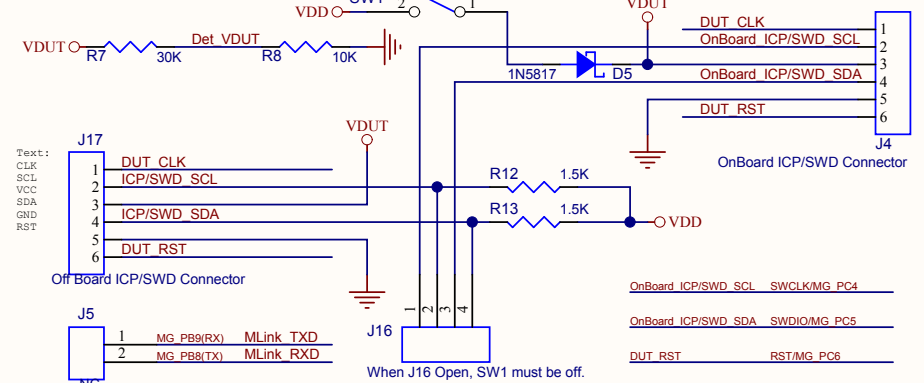


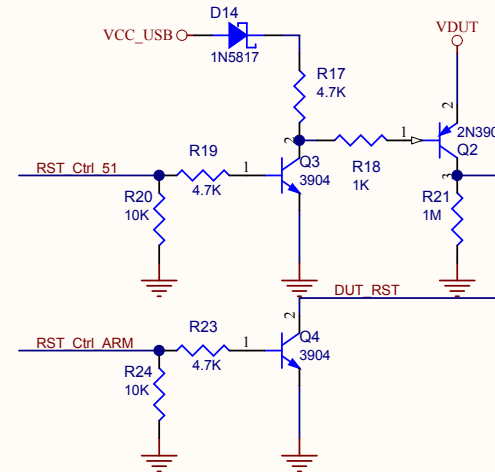
Main MCU



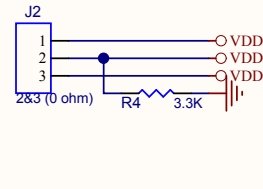
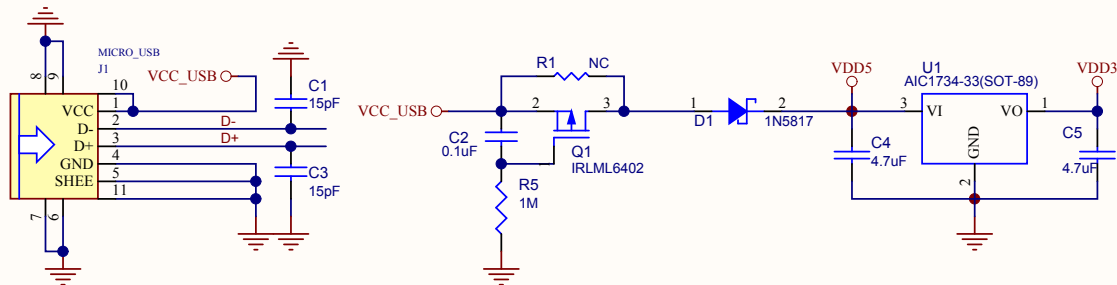
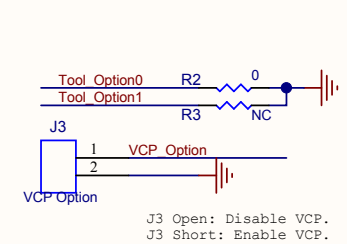
ICE Interface

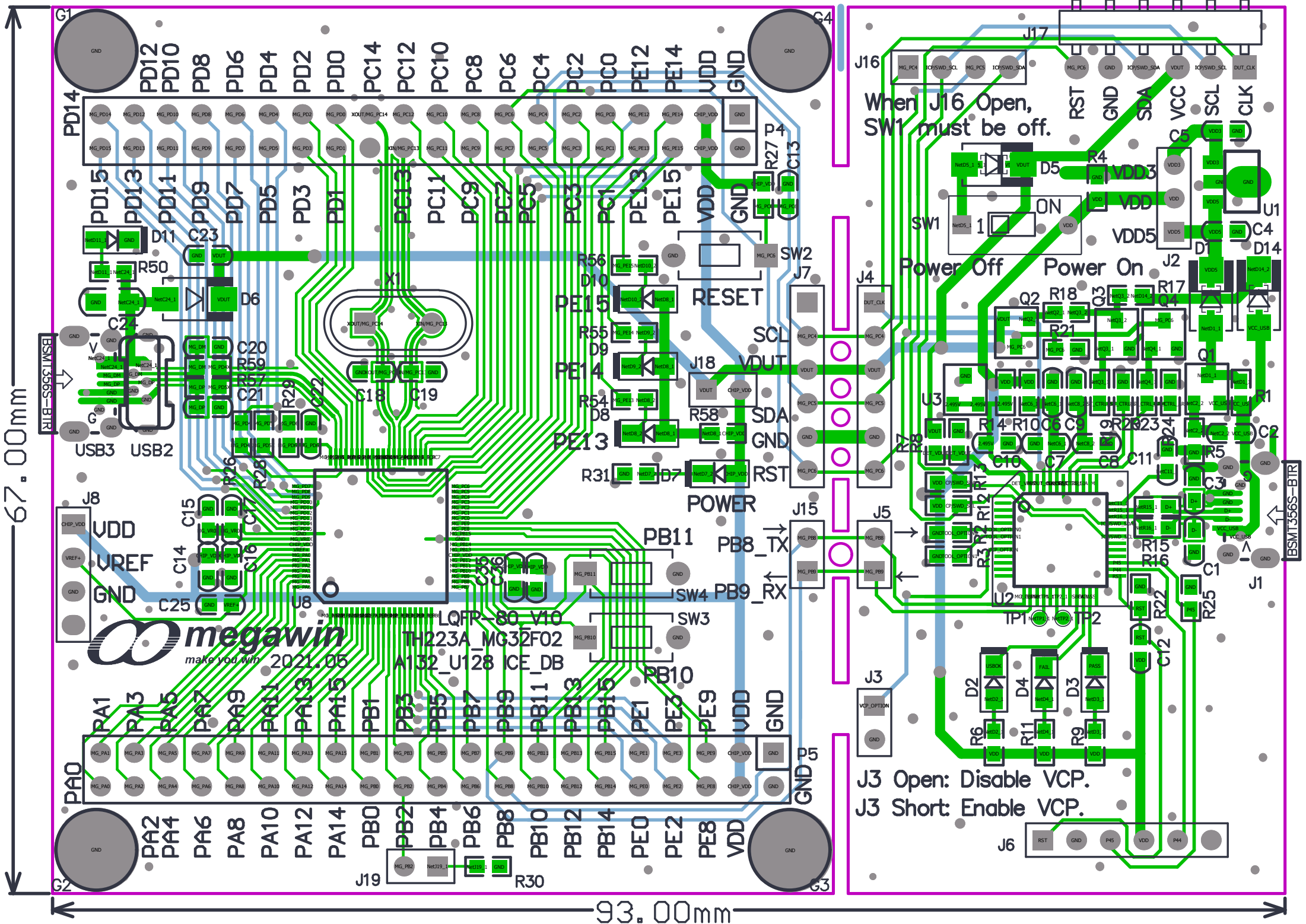


RST Pin Ctrl



Tool Option





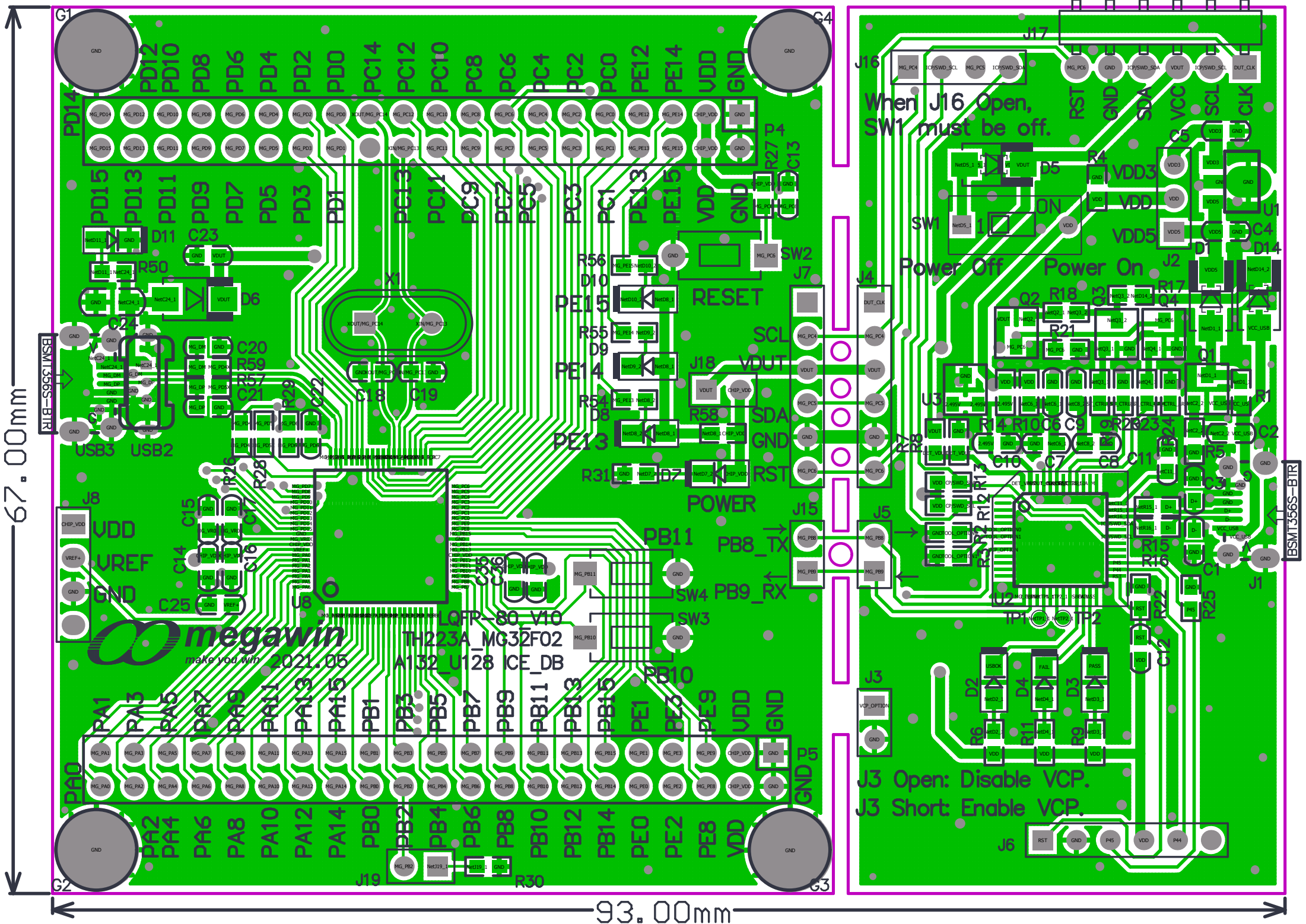
67.00mm

93.00mm

When J16 Open,
SW1 must be off.

Power Off Power On

J3 Open: Disable VCP.
J3 Short: Enable VCP.



67.00mm

93.00mm

When J16 Open,
SW1 must be off.

Power Off Power On

J3 Open: Disable VCP.
J3 Short Enable VCP.

