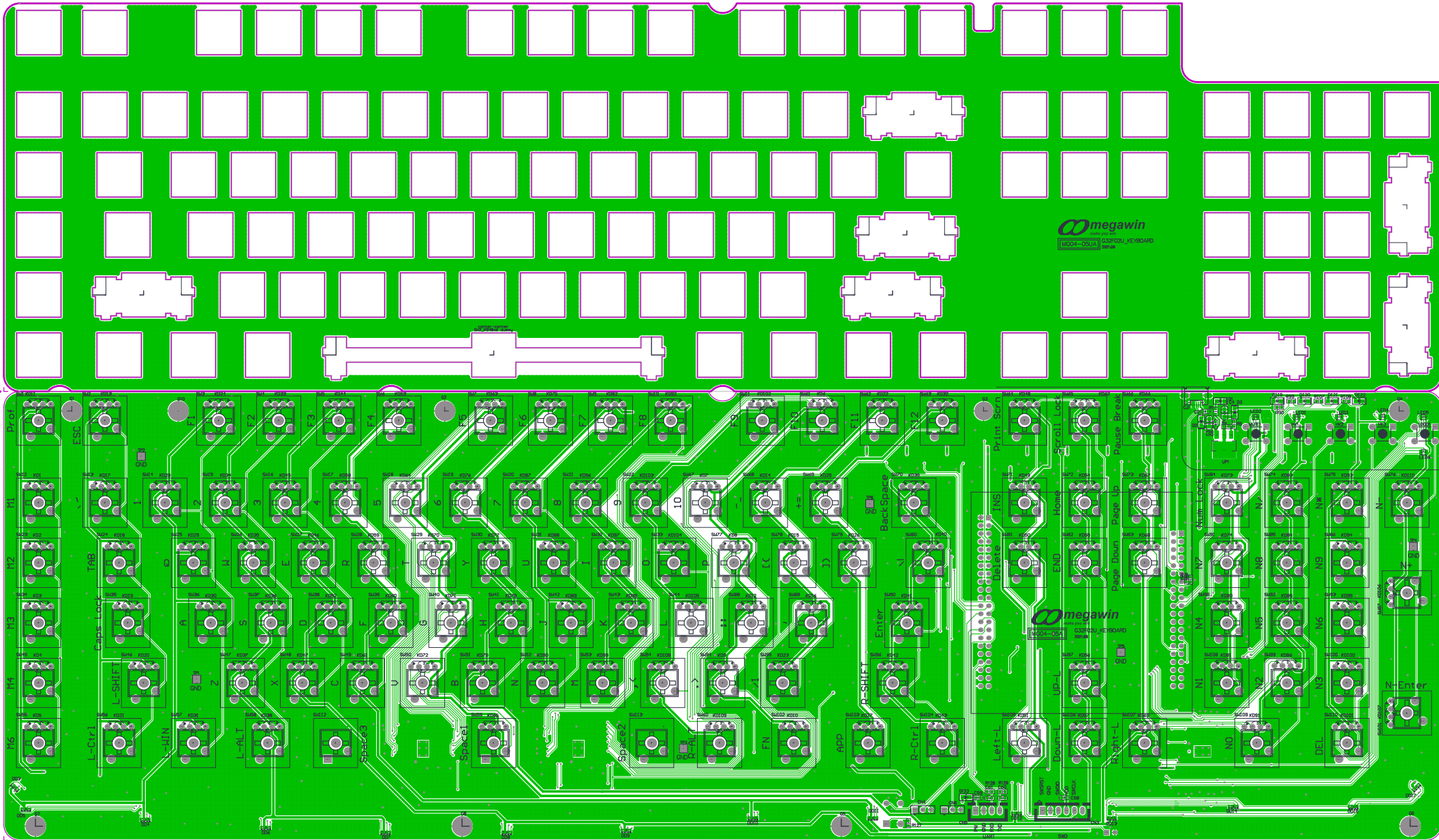
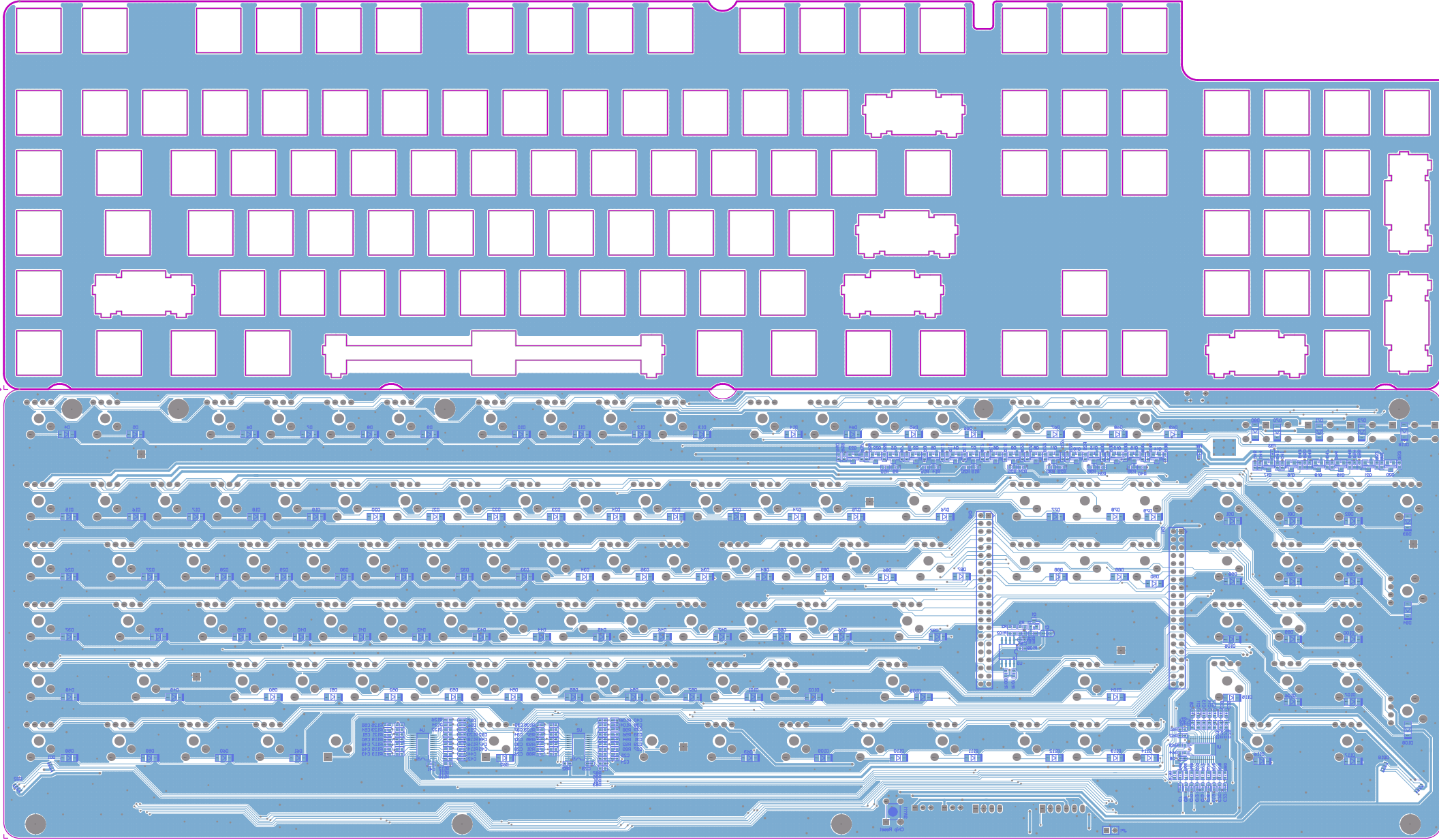


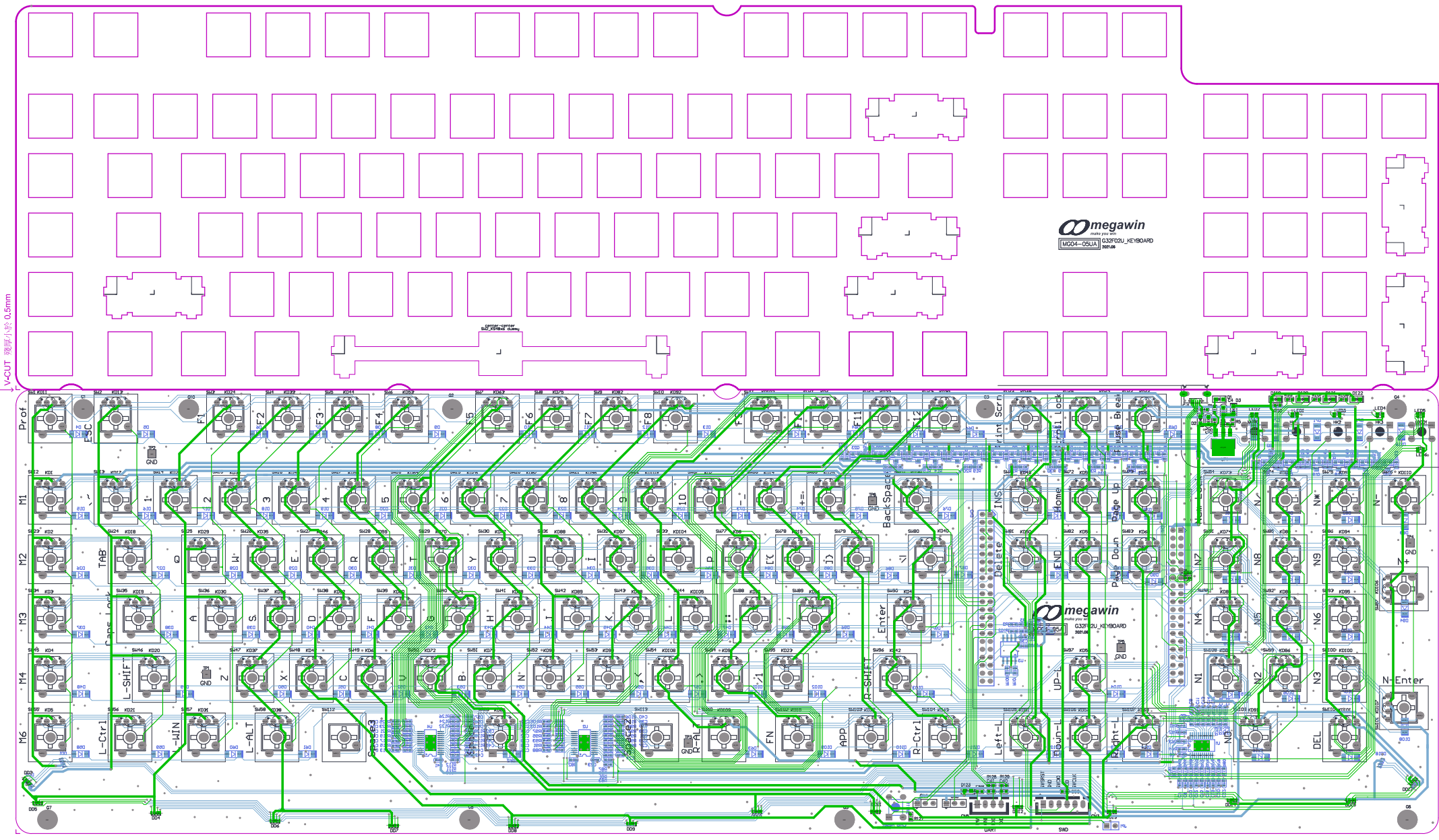
V-CUT 殘厚小於 0.5mm



↓V-CUT 殘厚小於 0.5mm



V-CUT 殘厚小於 0.5mm



megawin
WQ04-05UA G327020U_KEYBOARD
REV.06

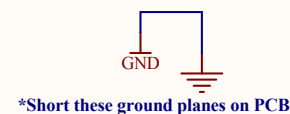
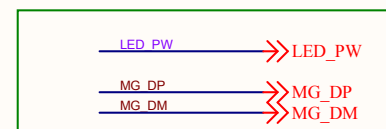
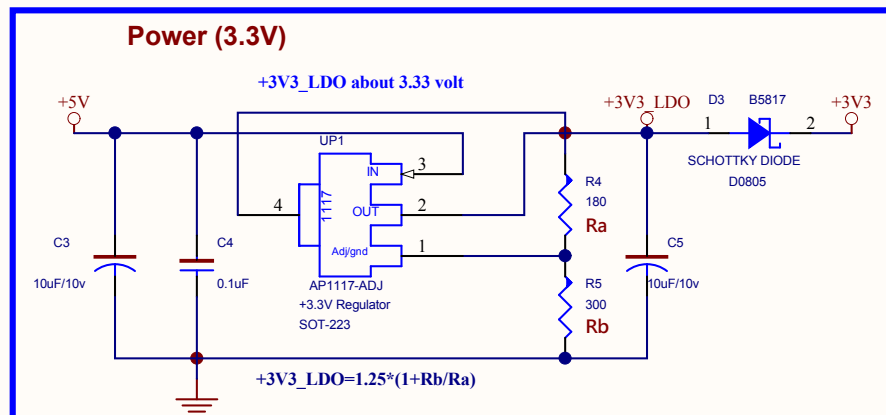
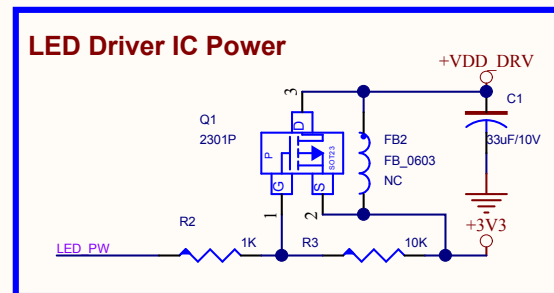
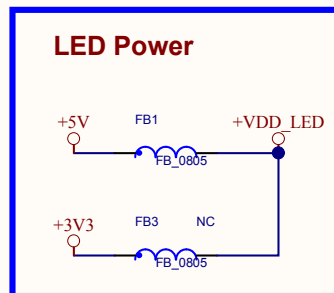
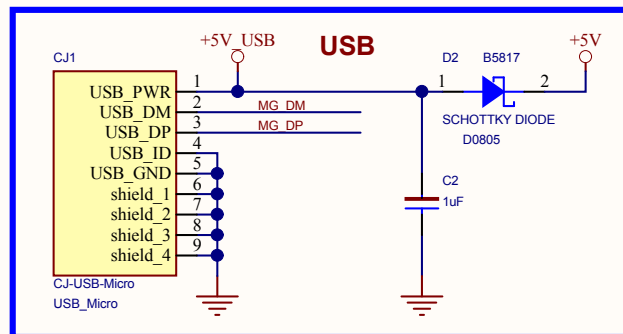
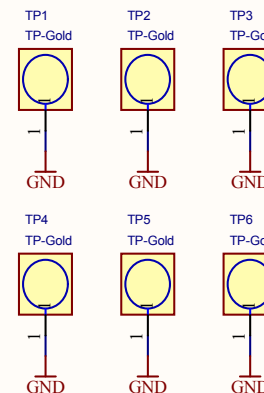
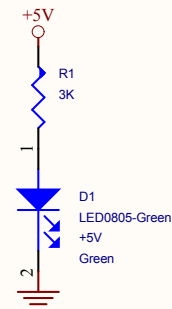
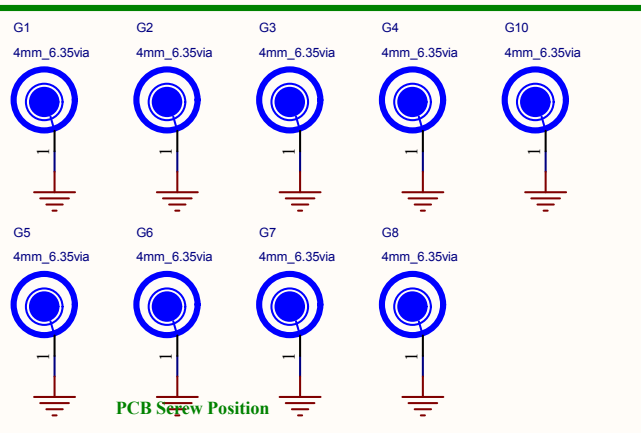
megawin
WQ04-05UA G327020U_KEYBOARD
REV.06

MG04-05A

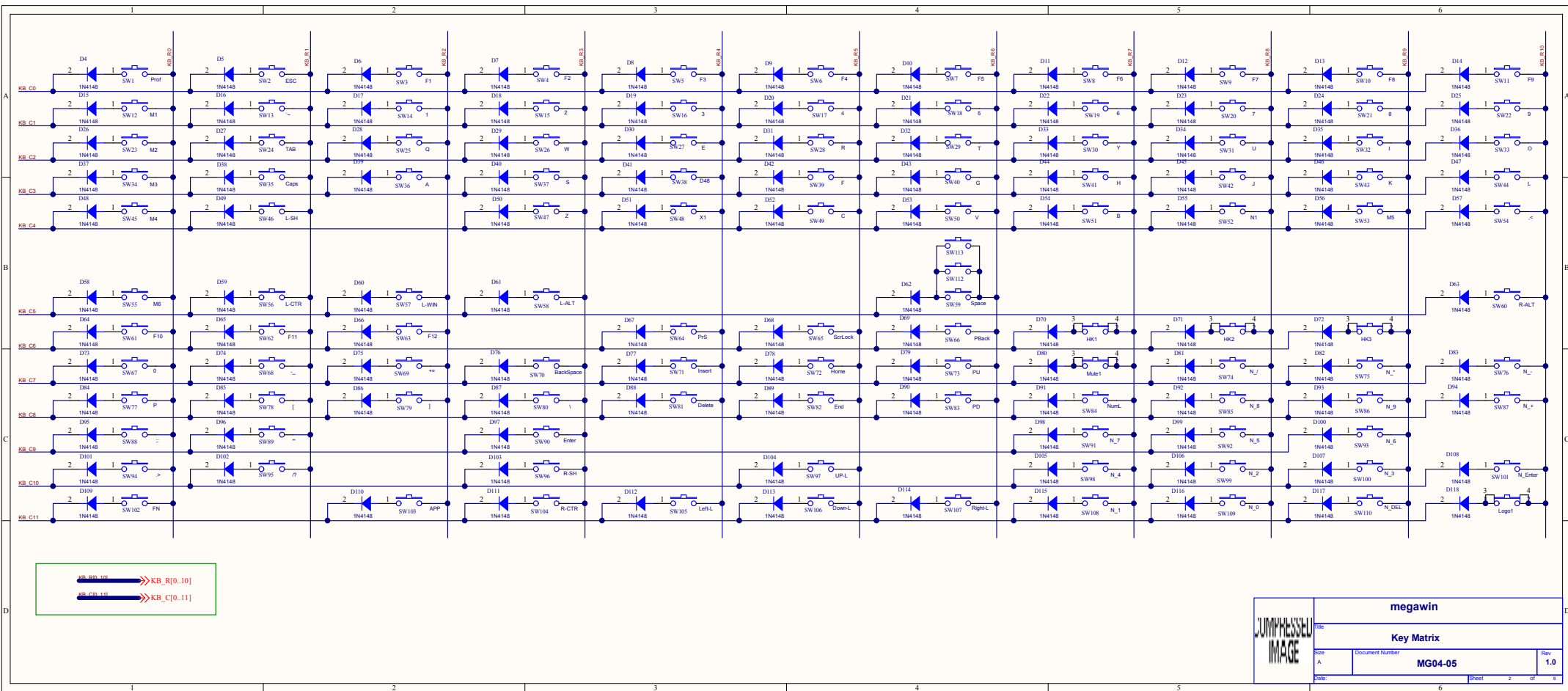
2021.1

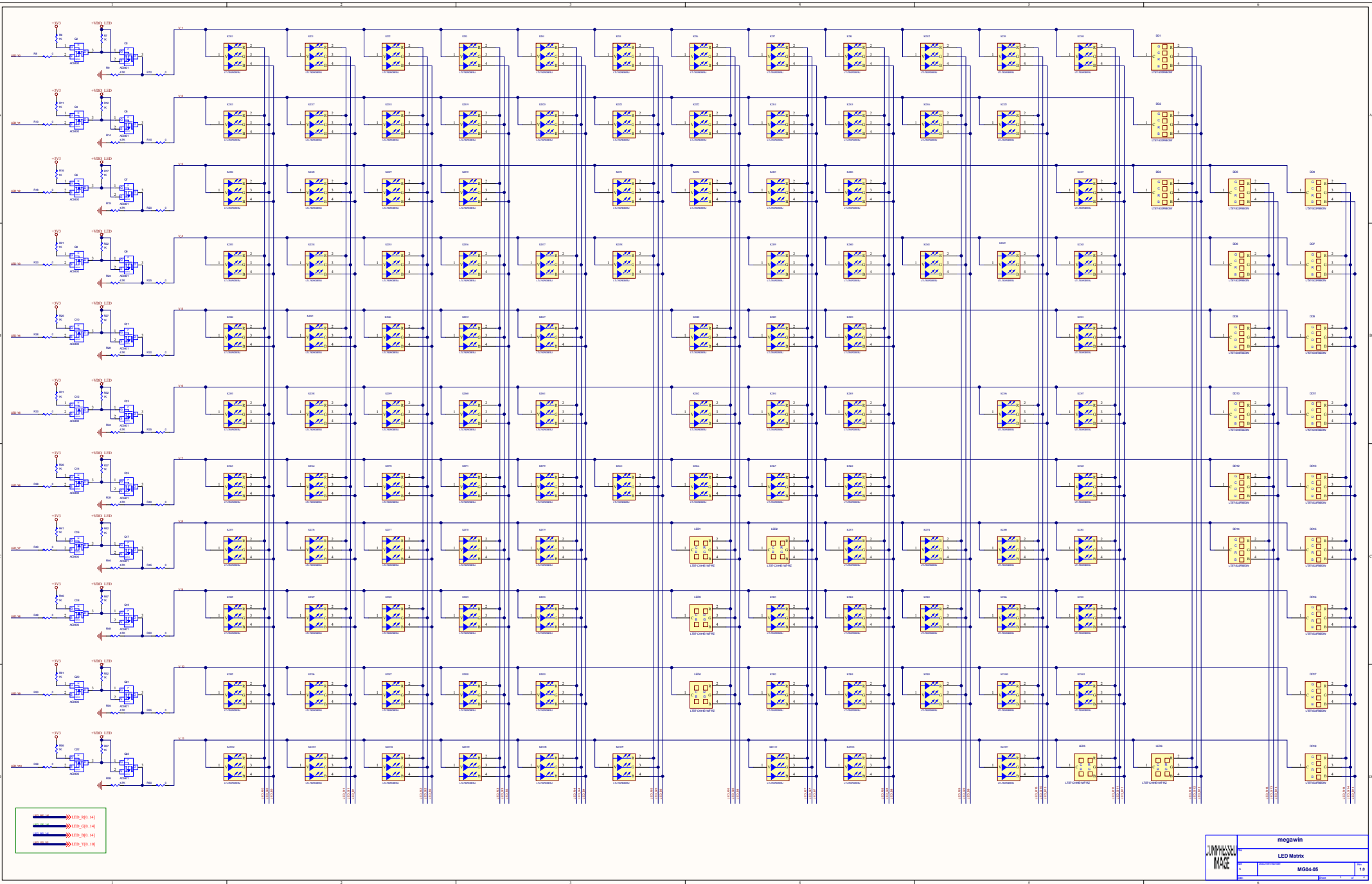
GRxx-21xxx

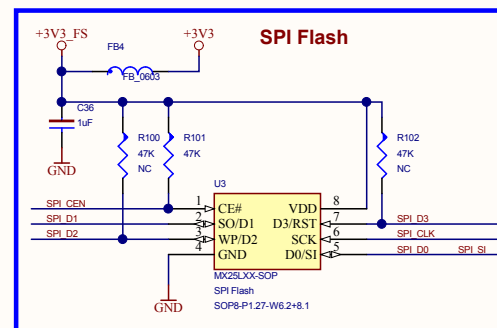
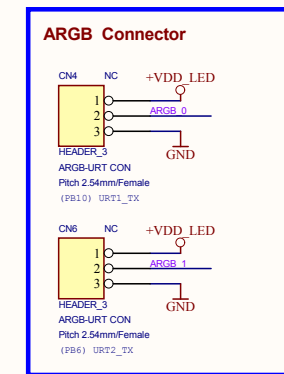
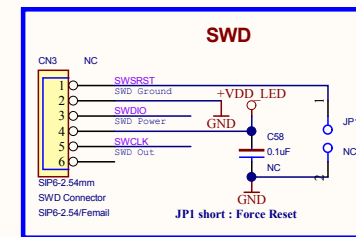
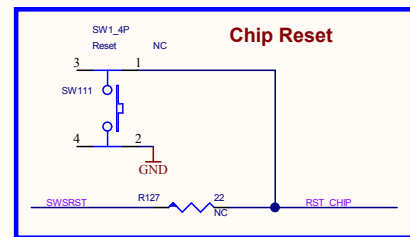
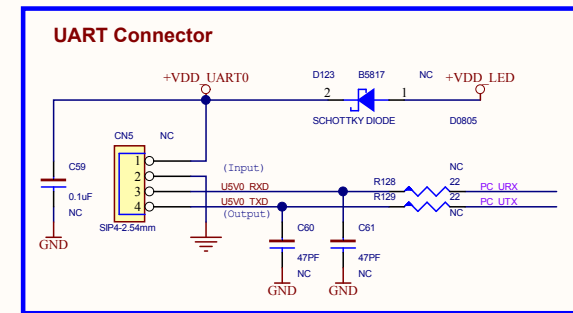
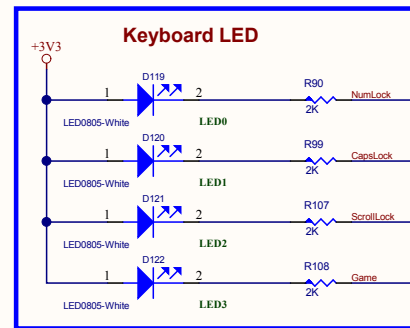
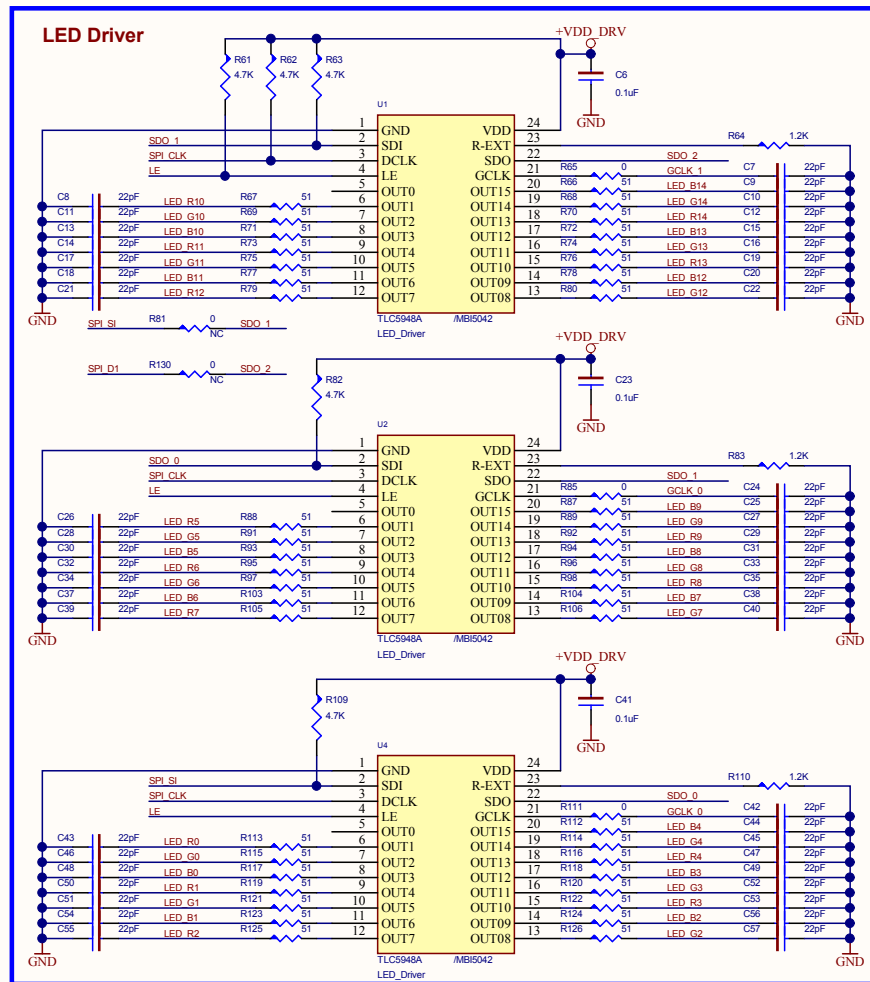
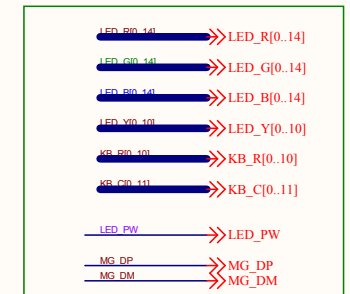
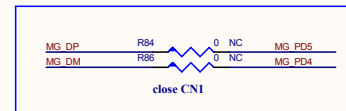
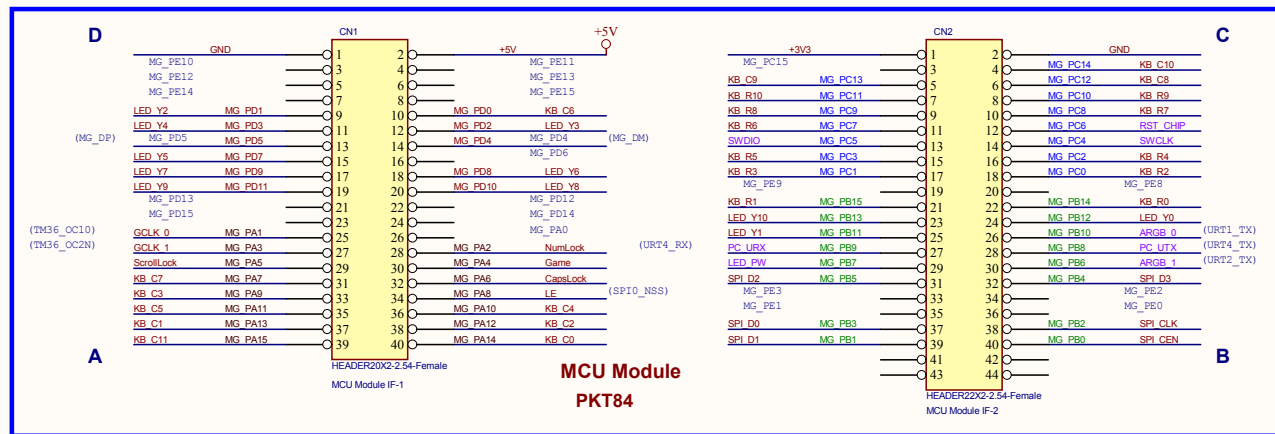
MG32F02U USB Keyboard



COMPRESSED IMAGE	megawin		
	System Power		
	Size A	Document Number MG04-05	Rev 1.1
	Date:	Sheet 1 of 6	







Board Features :

- * MG32F02U Demo Board
- * USB Device Interface
- * Key Matrix Keyboard
- * RGB LED Matrix
- * ARGB Interface

Power ~

- * USB-Micro Connector
- * Built-in 5V-to-3.3V(VDD) LDO Circuit

Debug Interface ~

- * SWD IF Connector SIP6-2.54 *1
- * UART Connector SIP4-2.54 * 2

Module IF

- * MCU Chip Module Connector 20x2 *1

On Board Component Circuit

- * SPI Flash SOP

Others ~

- * Push Button *1 (Reset)
- * Key Matrix * 110
- * RGB LED *110
- * Extra Key *5
- * Around LED *18
- * Extra LED *6
- * User LED *4

Layout Rule :

- * Impedance :
 - 1. Single-end signals 12 mil/124ohm(Coated MicroStrip) for general nets
 - 2. Single-end signals 10 mil/129ohm(Coated MicroStrip) for LQFP80
 - 3. Single-end signals with ground shield 12-6/61ohm(Coated Coplanar Strips)
 - 4. USB differential signals 15-5-15/90ohm (Edge-Coupled Coated MicroStrip)
- * Power/Ground :
 - 1. Bypass cap. need close to related power/ground pin
 - 2. Using Copper for DC input source and LDO input/output path

Board Note :


- * Ferrite Beed Spec :
 - FB : Rdc=0.2 , Z=300/100MHz , Idc=500mA MCB2012S301H
 - FB_L : Rdc=0.015 , Z=120/100MHz , Idc=6000mA MHC3216S121W
 - FB_S : Rdc=0.25 , Z=60/100MHz , Idc=500mA MCB1608H600H
 - FB_0603 : Rdc=0.15 , Z=120/100MHz , Idc=500mA MCB1608S121H

ECO List on Circuit:

- 1. Add G10 Screw on PCB left-top corner
- 2. Fix SW112/SW113 nets/traces missing on PCB(circuit no change)
- 3. Change CN3/CN5 +VDD net to +VDD_LED
- 4. Change CN4/CN6 +5V net to +VDD_LED
- 5. Add R130 and SDO_2 net on U1

ECO List on PCB only:

- 1. Rotate left 90 degree of SW87(+), SW101(Enter) on MG04-05A PCB
- 2. Change Space key (SW59) mechanical outline on MG04-05UA PCB

	megawin		
	Board Comment		
	Size A	Document Number MG04-05	Rev 1.0
	Date:	Sheet 5 of 6	

COMPRESSED IMAGE

COMPRESSED IMAGE	megawin		
	Title		
	PCB Placement Plan		
	Size A	Document Number MG04-05	Rev 1.0
	Date	Sheet 6 of 6	