

# Megawin Technology Co., Ltd.

## Institutional Investor Conference (H1 2025)

Code: 3122

Date: June 24, 2025

Spokesperson:

Alex Liao

Vice President, Operation & Marketing Center

(TEL) 886-3-6234096

(E-mail) sholder@megawin.com.tw



# Safe Harbor Notice

Megawin's statements of its current expectations are forward-looking statements subject to significant risks and uncertainties and actual results may differ materially from those contained in the forward-looking statements.

Except as required by law, we undertake no obligation to update any forward-looking statement, whether as a result of new information, future events, or otherwise.

# Overview

## ■ Established

June, 1999

## ■ Chairman

Kenny Wen

## ■ Employees

80 employees

## ■ Capital

NTD 407 millions

## ■ Business

Development, design, and sale  
microcontrollers  
(a MCU-based IC design house)

## ■ Main products

Arm®Cortex®-M0/M0+/M3 MCU,  
8051 MCU,  
USB MCU,  
Power IC (LDO)/BLDC Series



-  **I Operation Performance & Financial Results**
-  **II Product Application & Business Outlook**
-  **III Q & A**



# Agenda





# I. Operation Performance & Financial Results

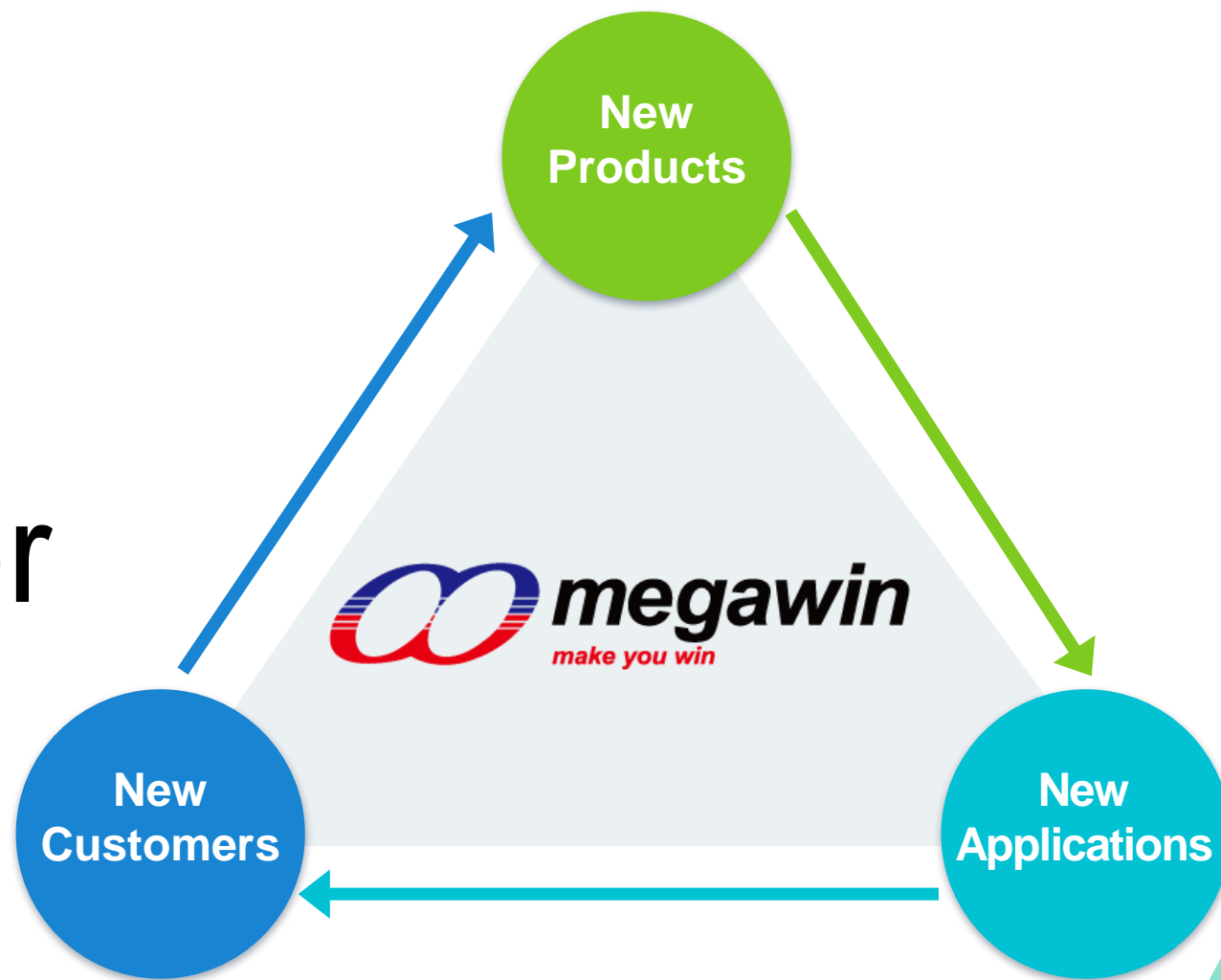
# Key Growth Drivers for Revenue

## Total Solution

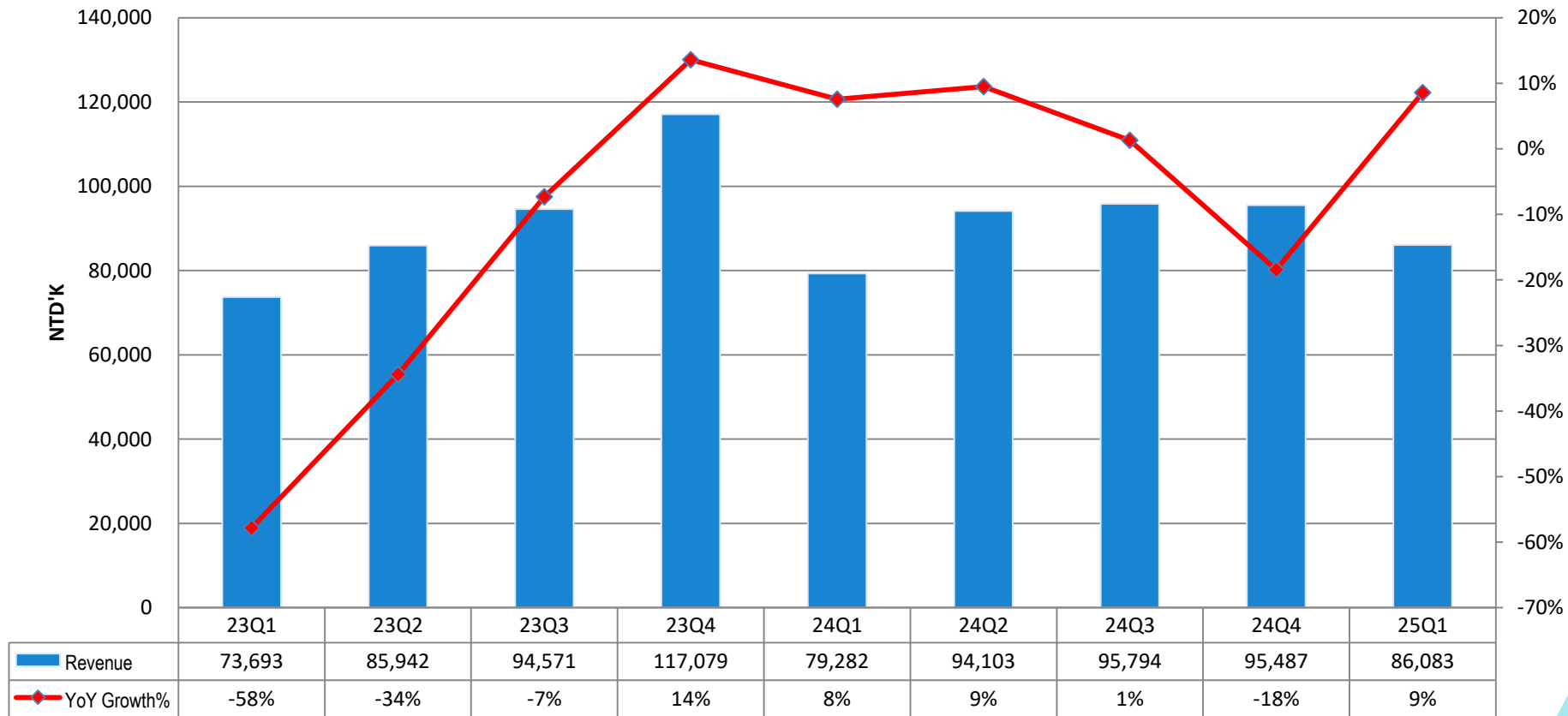
Provide total solution for customers

## Best Cost-Performance Ratio

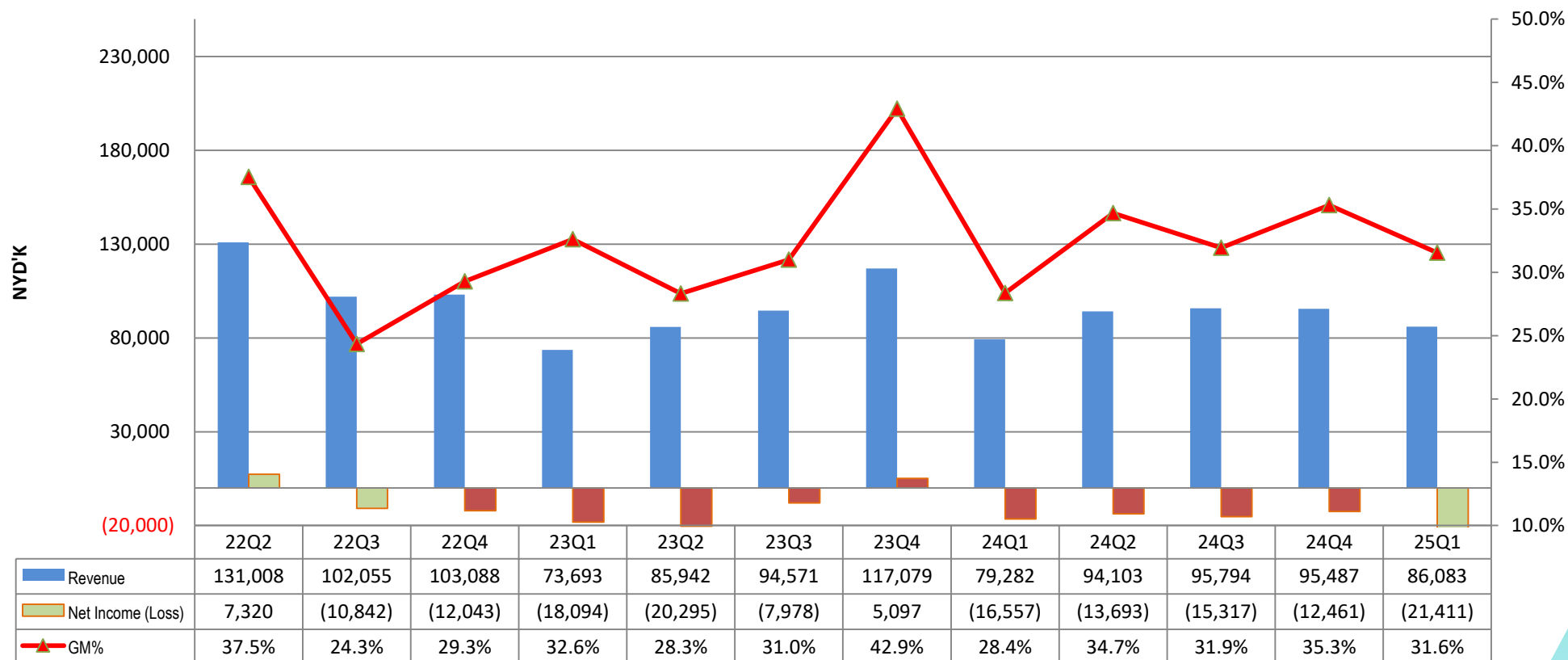
Achieve the best cost-performance ratio



# Quarterly Revenue & Growth Rate

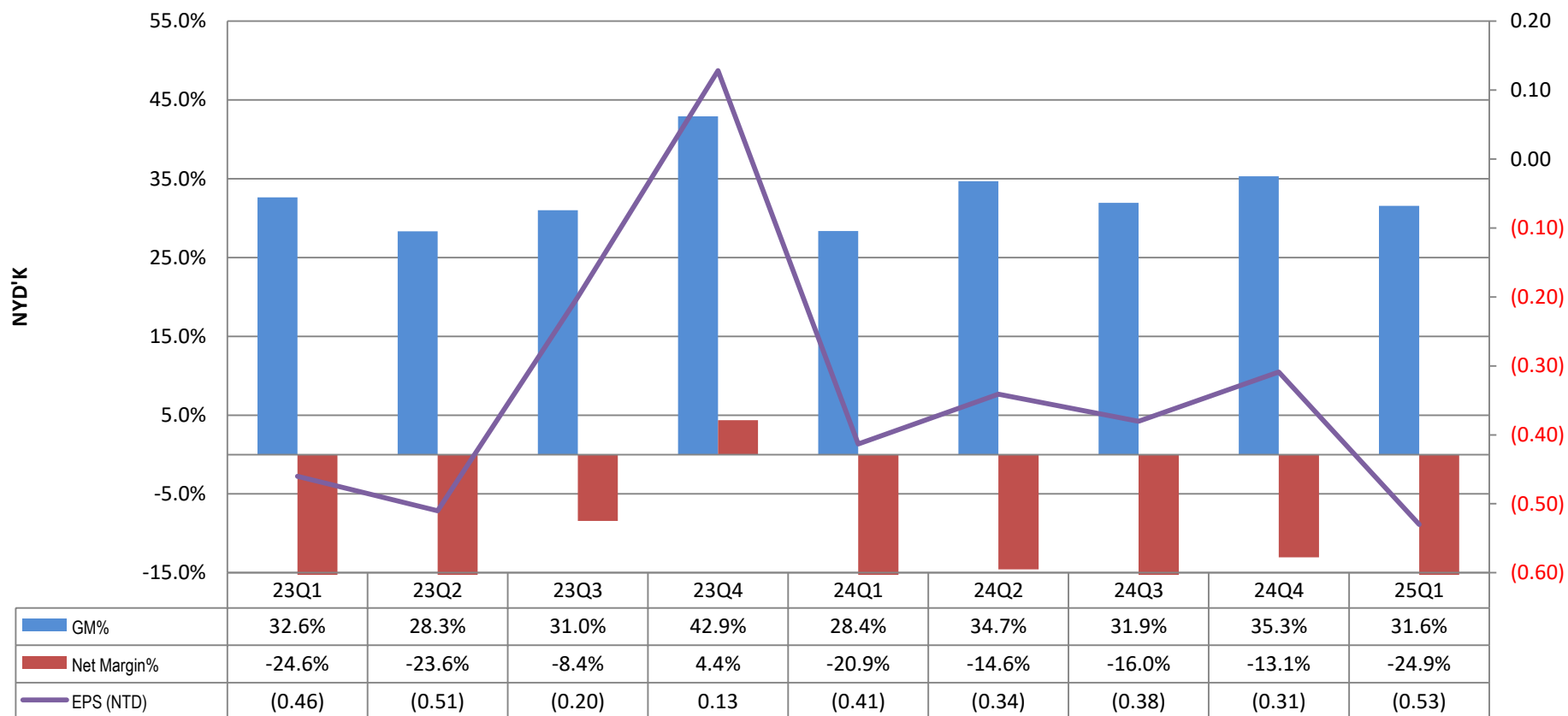


# Operating Results (1/2)





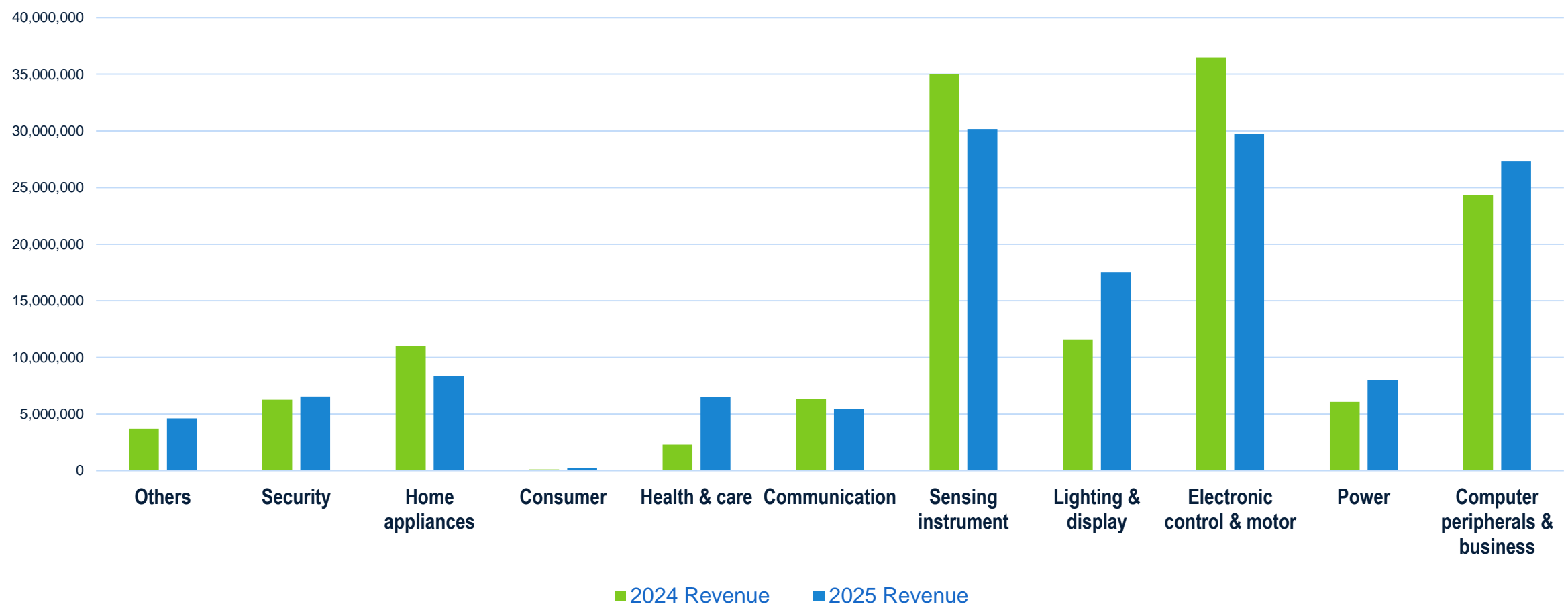
# Operating Results (2/2)



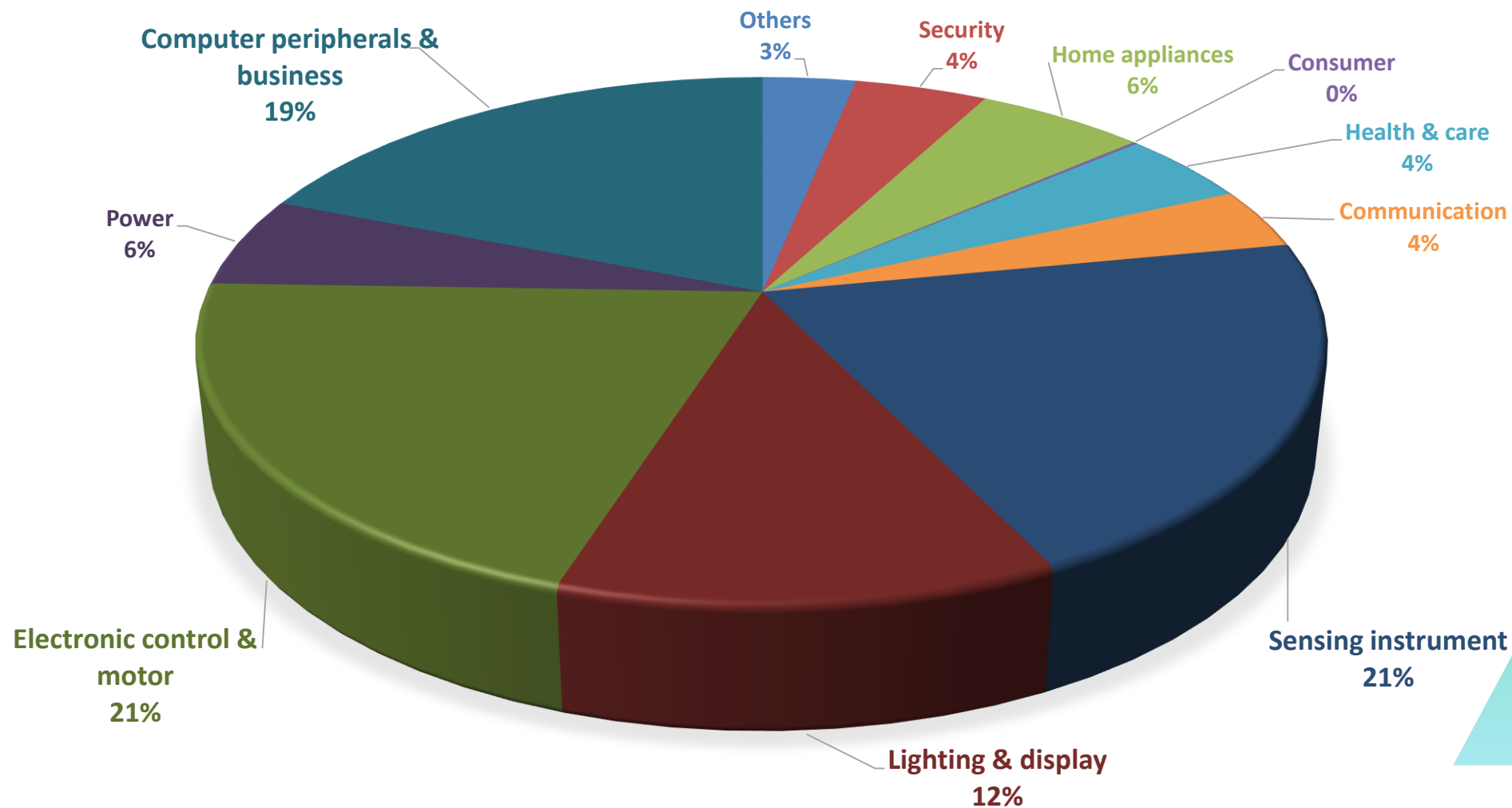


## II. Product Application & Business Outlook

# MCU Growth Analysis by Industry For the First Five Months of 2025



# MCU Revenue Analysis by Industry For the First Five Months of 2025



# Megawin Top 10 Applications For the First Five Months of 2025

Computer peripherals

14%

Motor applications

12%

Weighing products

9%

Home appliance  
display panel

6%

Industrial instrument

5%

Battery management  
system

4%

3C digital home  
appliances

3%

Outdoor lighting  
control

3%

Home network

3%

Fitness equipment  
controller

3%

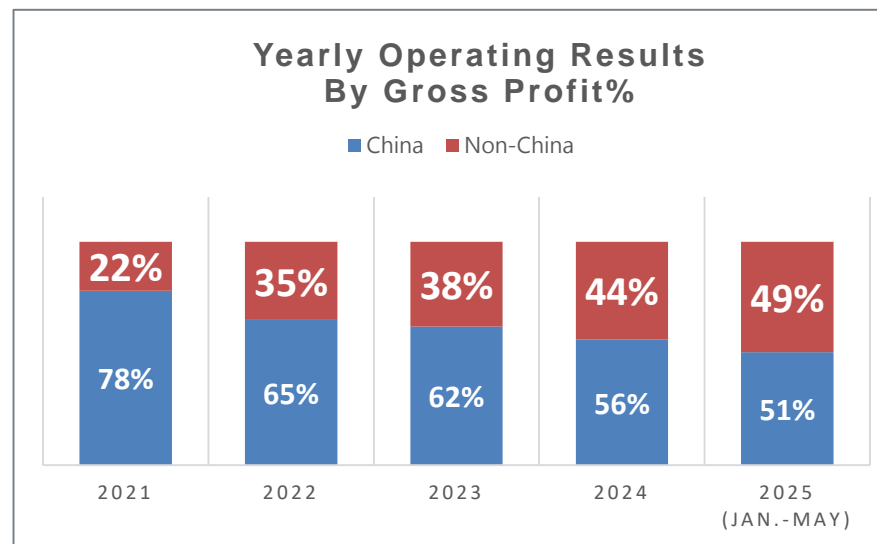
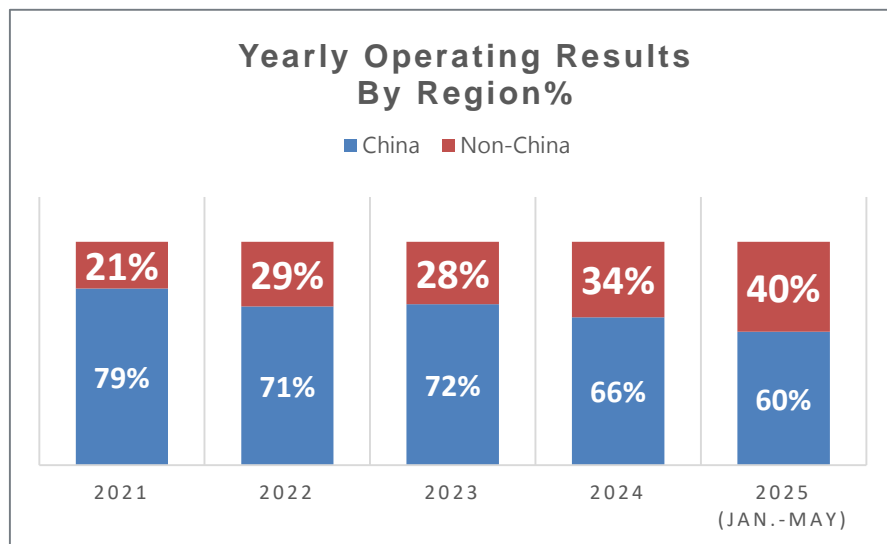
Accounted for  
**62%** of the  
total revenue



# Continue to Cultivate Overseas Markets



- Gradually increasing human resources for overseas expansion
- Cumulative revenue for the first five months of 2025 declined by 0.48% year-over-year (YoY)
- Revenue in the China region declined by 13%, while non-China regions grew by 22%



# Countermeasures to China's Semiconductor Price Involution

- Price-cutting competition in China's IC industry has intensified in recent years. Megawin continues to cultivate overseas markets.
- Products have advanced to 12-inch wafer processes, providing products with both cost-effectiveness and quality.
- Collaborating with strategic partners for customized (ASSP) MCU development.
- Providing more system integration solutions.
- Expansion of the China market footprint: Originally centered around customers in Shenzhen, now expanding into the following three regions:
  - ✓ Changsha: Medical equipment, sensors and instruments; customers here are less price-sensitive.
  - ✓ Xiamen: Industrial automation equipment, healthcare devices, and smart food drawers.
  - ✓ East China: Home appliance motherboards and sensor instruments are the main industries. New products scheduled for mass production in 2026 are expected to further expand this customer base.

## Eastern Europe

Two distributors continue to ship products, and a new distributor partnership was established this year.

## Turkey

Cooperating with one distributor and negotiating with another one this year

## India

Three agents are actively cooperating with many end customers, which is a fast-growing market.

## Japan

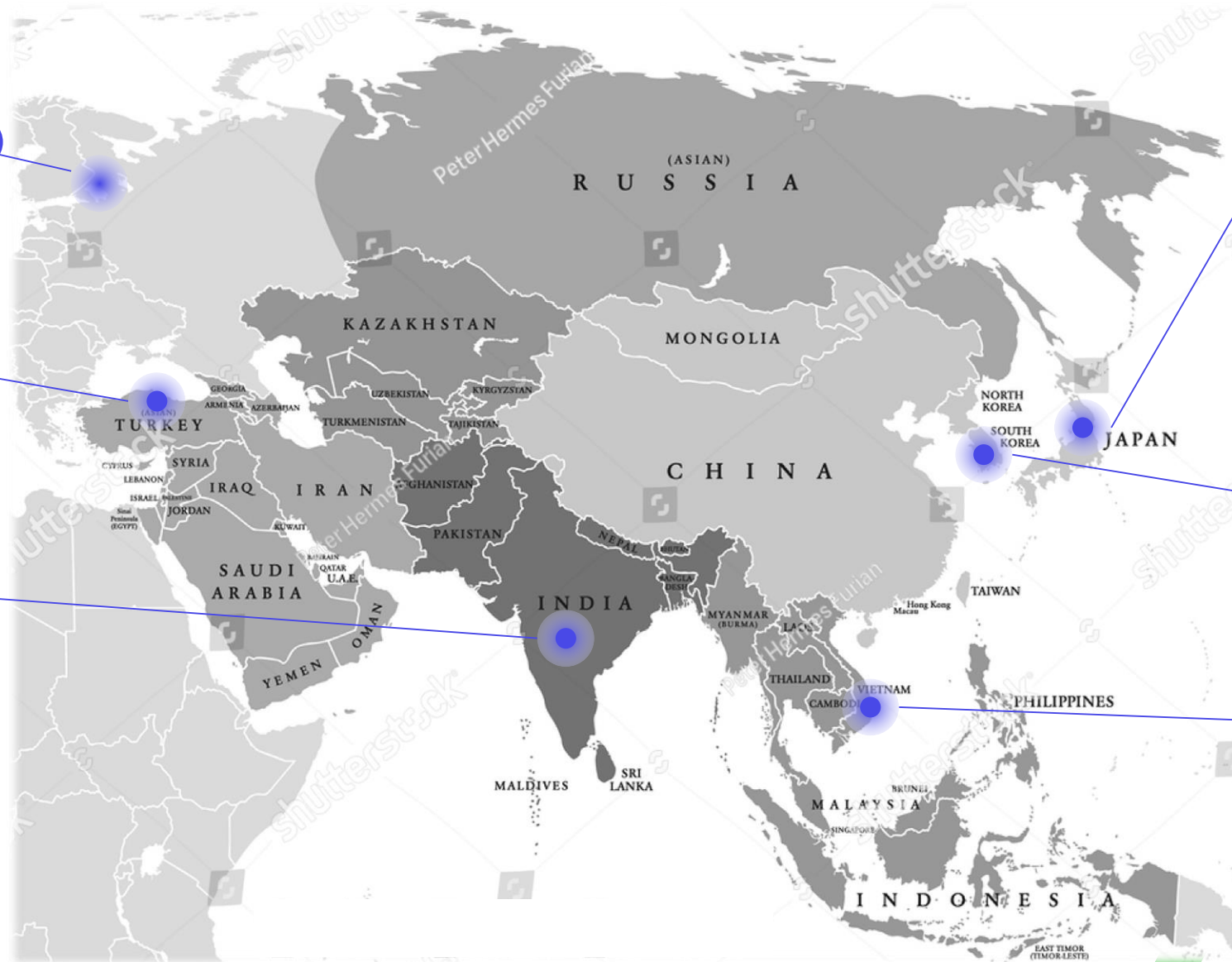
Two distributors are in collaboration, with the number of adopted projects gradually increasing.

## South Korea

Collaborating with three distributors, with stable shipments underway.

## Vietnam

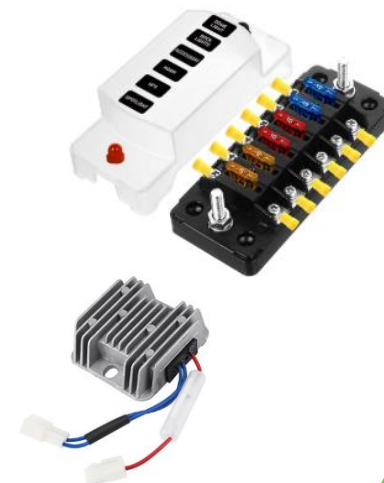
In cooperation with one distributor, and new collaboration opportunities with additional manufacturers are being pursued.



# Overseas Business Development Status



# Automotive-Related Applications Are Being Gradually Adopted



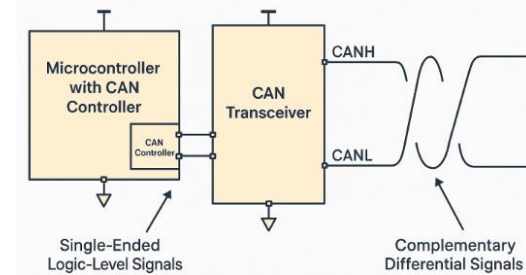
- The automotive industry places high demands on quality, aligning well with Megawin's product strengths.
- The product adoption and validation cycle is long, requiring slower progress and deep cultivation.
- The following are the successful cases introduced in the past two years, and a good reputation has been established.

Manufacturer	Application	Manufacturer	Application
E***Technology (TW)	Around View Monitor, car audio	H***Technology (CN)	Car jump starter
J***CO. (TW)	T brand car audio	Z***Technology (CN)	Car headlights and taillights
M*** (TW)	Engine room voltage regulator	C*** (CN)	Car headlights and taillights
T***Group (TW)	Engine room cooling fan	TE Connectivity (CH)	Heavy truck smart fuse box
A*** (TW)	Export two-wheeler turn signal		



# Automotive-Related Products

## LIN and CAN Transceivers Development



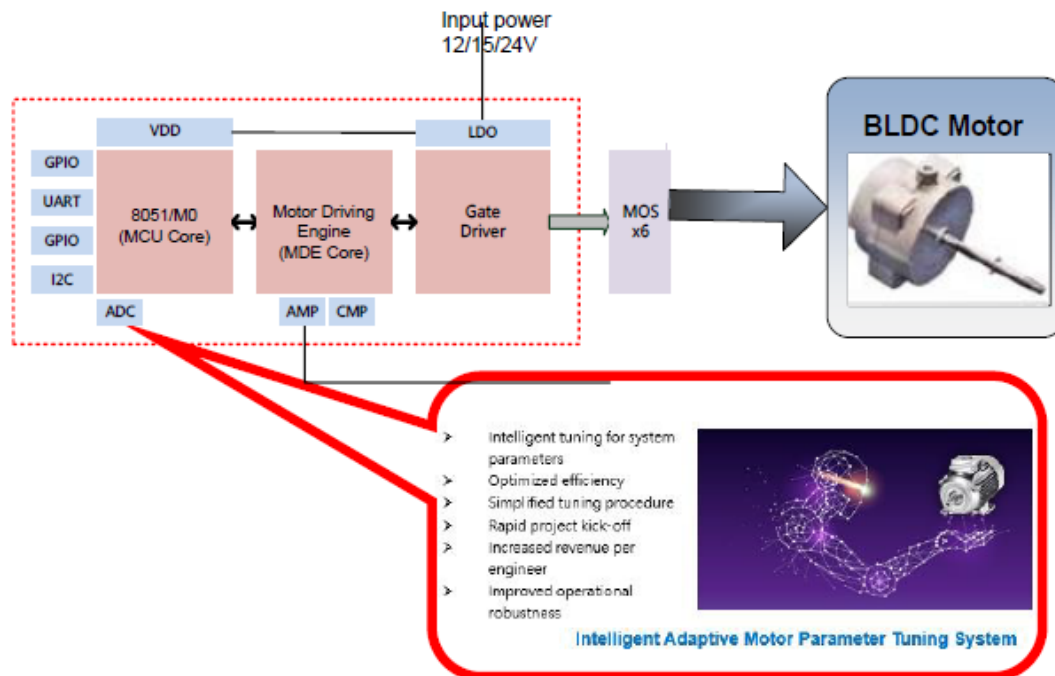
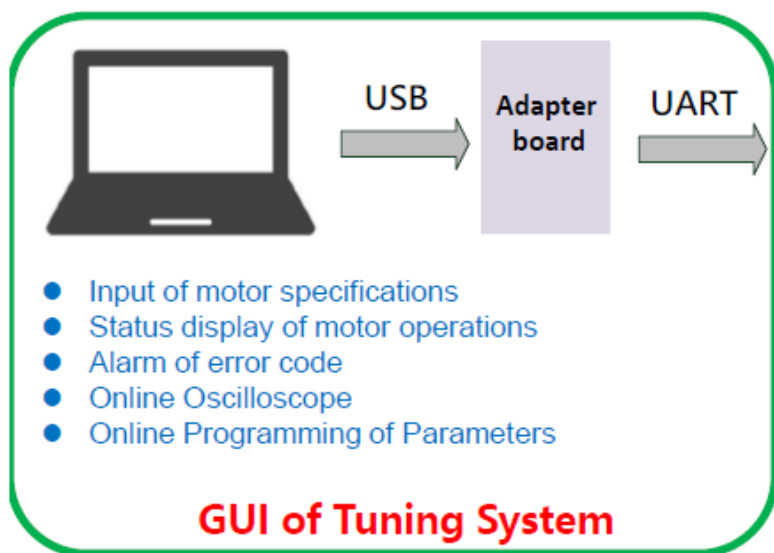
- LIN (Local Interconnect Network) and CAN (Controller Area Network) transceivers are key components for automotive communications.
- CAN transceivers are used in modules that require high reliability and high-speed communication
  - ✓ such as powertrain systems (ECU), braking systems (ABS), and airbag systems (SRS)
- LIN transceivers, on the other hand, are typically used in low-speed, non-real-time automotive systems
  - ✓ such as power windows, seat adjustment, mirror control, and lighting modules
- Mass production is expected to begin in Q4 this year, and the transceivers will be promoted together with MCUs.

# Brushless DC Motor Solution Strategy

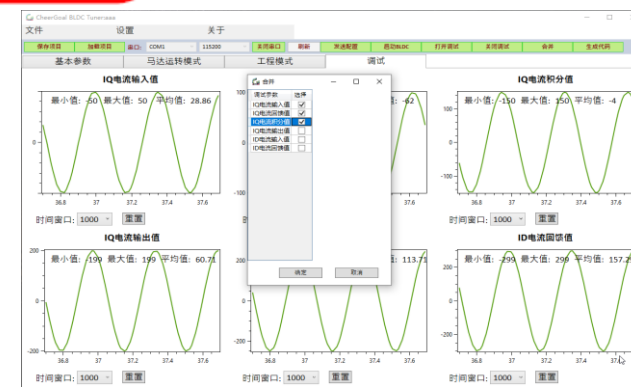
- Megawin offers two series of brushless motor products to meet diverse customer needs
  - ✓ Dual-core ASIC architecture with hardware-based algorithms to enhance motor driving performance and stability.
  - ✓ 32-bit motor control architecture integrating motor computation libraries to enhance flexibility in motor applications.
- Continuous provision of various motor solutions to support rapid customer implementation
- Intelligent motor auto-tuning
  - ✓ Reduce the manpower and time cost required for motor adjustment.
  - ✓ Integrated with a Field-Oriented Control (FOC) smart tuning system.
  - ✓ By simply setting the motor specifications and hardware configuration, the system can “intelligently and adaptively” adjust parameters to optimize motor drive performance.
  - ✓ A fully graphical tuning software is expected to launch in Q4 this year.
  - ✓ Planning robot and drone motor electronic control development.



# Brushless Motor Graphical Tuning System

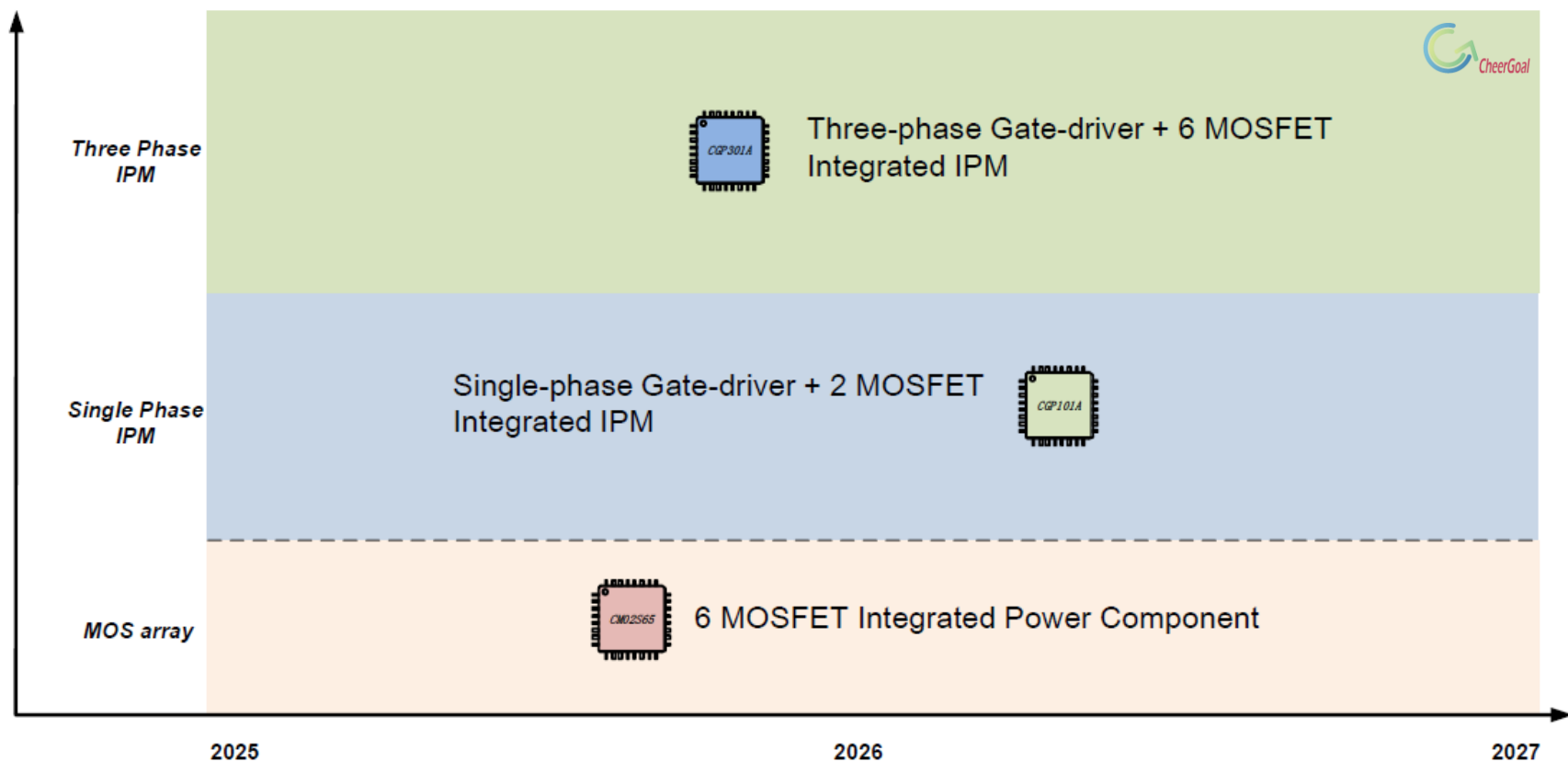


The motor control GUI interface significantly simplifies customer development, greatly reduces the need for FAE (Field Application Engineer) resources, and enables rapid project completion.



# IPM / MOS Array Motor Product Roadmap

- Megawin, together with its affiliated companies CheerGoal and Chip1, has jointly developed compact-package IPM (Intelligent Power Modules) and MOS array products to meet motor application requirements.
- These miniaturized products, which combine cost advantages with advanced thermal packaging technology, can be applied to various AI cooling fan systems and robot joints.



# High-Precision ADC Series Enters Mass Production

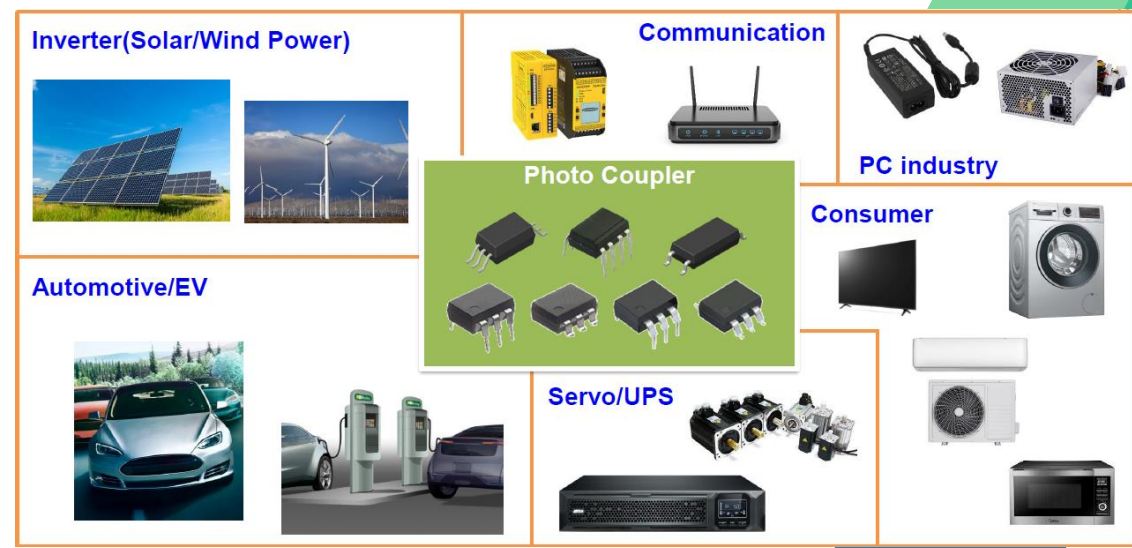
- High-precision ADC can be widely used in various precision measurement markets and is a high-priced product dominated by international brands.
- With precision matching that of foreign brands, customers can easily switch to our product.
- In Q1 of this year, Megawin launched its first 20-bit ADC product, targeting applications in electronic scales and sensors.
- The company will continue to release products with higher resolution (24-bit) and faster sampling speed (30K), covering a wide range of consumer and specialized precision measurement applications.

	Promoting	2025 H2	2026 H1
Part No.	MAD2402	MAD2418	MAD2404
Applications	<ul style="list-style-type: none"> <li>✓ Consumer electronic scales</li> <li>✓ Sensor detection</li> <li>✓ Handheld health devices</li> </ul>	<ul style="list-style-type: none"> <li>✓ Precision instruments and equipment</li> <li>✓ Scientific instruments and industrial automation</li> <li>✓ Medical equipment</li> </ul>	<ul style="list-style-type: none"> <li>✓ Industrial weighing control</li> <li>✓ Industrial control sensing instruments</li> <li>✓ Power monitoring module</li> <li>✓ Industrial pressure and strain sensing</li> </ul>



# Entering the Isolator Chip Market

- Isolation components include optocouplers, capacitive isolators, and magnetic isolators. These are widely used across various industries such as industrial control, automotive, energy storage inverters, and networking, with a total market size of approximately USD 4 billion.
- Megawin, in collaboration with her partners, has launched an optocoupler product line to meet industrial demands. The lineup includes phototransistors, high-speed optocouplers, phototriacs, and solid-state relays.
- We also work with affiliated companies to develop mainstream capacitive digital isolator chips.
- Samples are expected to be available for promotion in Q2 2026.



# ULP MCU Development Progress

- According to MarketsandMarkets statistics, the global ULP MCU market size will jump to US\$100 billion in 2026.
- ULP MCU (Ultra-Low-Power MCU)
  - ✓ Cooperate with foundry to develop ultra-low-power consumption technology (Device model, STD cell, PDK)
  - ✓ Has been in development for nearly 4 years. Current experimental results show that it can reduce about 70% power consumption.
  - ✓ The entire ULP IP has completed verification, and a series of low-voltage and low-power products is expected to be launched in Q2 2026.
- ULP MCU applications
  - ✓ Wearable device
  - ✓ Portable electronics
  - ✓ Personal medical equipment
  - ✓ Home automation
  - ✓ Smart sensor



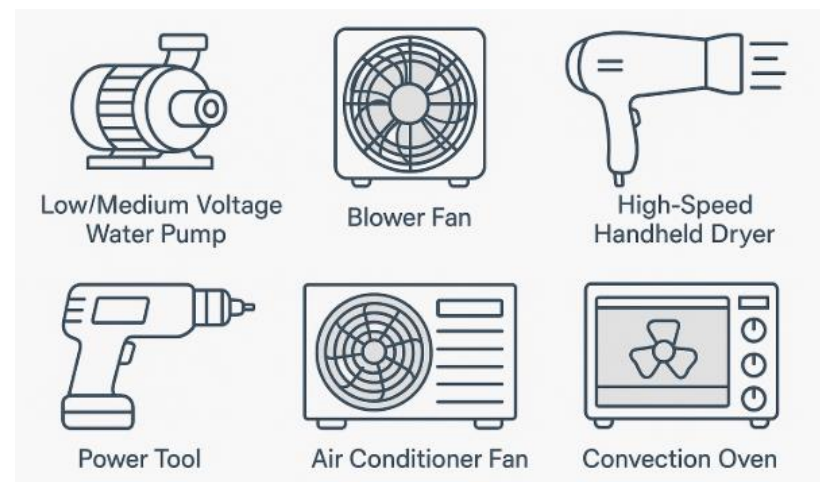
# Total Solution Development

## Qi2.0 magnetic wireless charging solution

- ✓ Development of the Qi2.0 15W magnetic wireless charging solution has been completed
- ✓ Plan to advance toward the next-generation 25W wireless charging solution



## Brushless motor solutions



## Other solutions

- ✓ Induction cooker solution
- ✓ Liquid level detection solution

# III. Q & A

# Appendix

1. Consolidated Statement Of Comprehensive Income
2. Consolidated Balance Sheet

# Appendix 1:

## Consolidated Statement Of Comprehensive Income

			單位：新台幣仟元	
	114年1月1日至3月31日		113年1月1日至3月31日	
	金額	%	金額	%
營業收入淨額	86,083	100	79,282	100
營業成本	(58,921)	(68)	(56,788)	(72)
營業毛利	27,162	32	22,494	28
營業費用	(47,047)	(55)	(39,799)	(50)
營業淨利 (損)	(19,885)	(23)	(17,305)	(22)
營業外收入及支出	(1,518)	(2)	770	1
稅前淨利 (損)	(21,403)	(25)	(16,535)	(21)
所得稅費用	(8)	—	(22)	—
本期淨利 (損)	(21,411)	(25)	(16,557)	(21)
每股盈餘 (虧損) (單位：元)	(0.53)		(0.41)	

## Appendix 2:

### Consolidated Balance Sheet (1/3)

代碼	資產	114年3月31日		單位：新台幣仟元 113年3月31日	
		金額	%	金額	%
	流動資產				
1100	現金及約當現金	\$87,582	13	\$125,430	17
1136	按攤銷後成本衡量之金融資產－流動	248,225	36	208,617	29
1170	應收票據及帳款	42,804	6	42,857	6
1180		289			
1220		738			
130X	存貨	80,024	12	87,949	12
1479	其他流動資產	9,063	1	10,466	2
11XX	流動資產總計	468,725	68	475,319	66
	非流動資產				
1535	按攤銷後成本衡量之金融資產－非流動			9500	1
1550	採用權益法之投資	27,888	4	33,916	5
1600	不動產、廠房及設備	146,728	22	150,943	21
1755	使用權資產	5,662	1	849	-
1780	無形資產	35,517	5	42,611	6
1920	存出保證金	601	-	625	-
1990	其他非流動資產	0		7380	1
15XX	非流動資產總計	216,396	32	192,017	34
1XXX	資產總計	\$685,121	100	\$721,143	100

## Appendix 2:

### Consolidated Balance Sheet (2/3)

代碼	負債及權益	114年3月31日		單位：新台幣仟元 113年3月31日	
		金額	%	金額	%
	流動負債				
2120		878			
2170	應付帳款	\$25,729	4	\$28,512	4
2200	其他應付款	30,653	5	38,284	5
2230	本期所得稅負債	8	-	19	-
2280	租賃負債－流動	2,685		882	
2320	一年內到期之應付公司債	0		198,682	28
2300	其他流動負債	18,118	3	3,913	0
21XX	流動負債總計	78,071	12	270,292	37
	非流動負債				
2530	應付公司債	190,272	28	0	-
2580	租賃負債－非流動	3074	-	0	-
2645	存入保證金	87		3,535	1
25XX	非流動負債總計	193,433	28	3,535	-
2XXX	負債總計	\$271,504	40	\$273,827	38

## Appendix 2:

### Consolidated Balance Sheet (3/3)

代碼	負債及權益	114年3月31日		單位：新台幣仟元 113年3月31日	
		金額	%	金額	%
	股 本				
3110	普通股股本	407,648	59	401,250	56
3140	預收股本		-	818	-
3100	股本總計	407,648	59	402,068	56
3200	資本公積	73,864	11	50,955	7
	保留盈餘				
3310	法定盈餘公積	10,711	2	14,674	2
3320	特別盈餘公積	917	-	917	-
3350	未分配盈餘	-79,439	-12	-20,520	-3
3300	保留盈餘總計	-67,811	-10	-4,929	-1
3400	其他權益	-84	-	-778	-
31XX	本公司業主權益總計	413,617	60	447,316	62
3XXX	權益總計	\$413,617	60	\$447,316	62
	負 債 及 權 益 總 計	\$685,121	100	\$721,143	100

# *Thank you!*

[www.megawin.com.tw](http://www.megawin.com.tw)



MG Website



LinkedIn