

8051 开发板

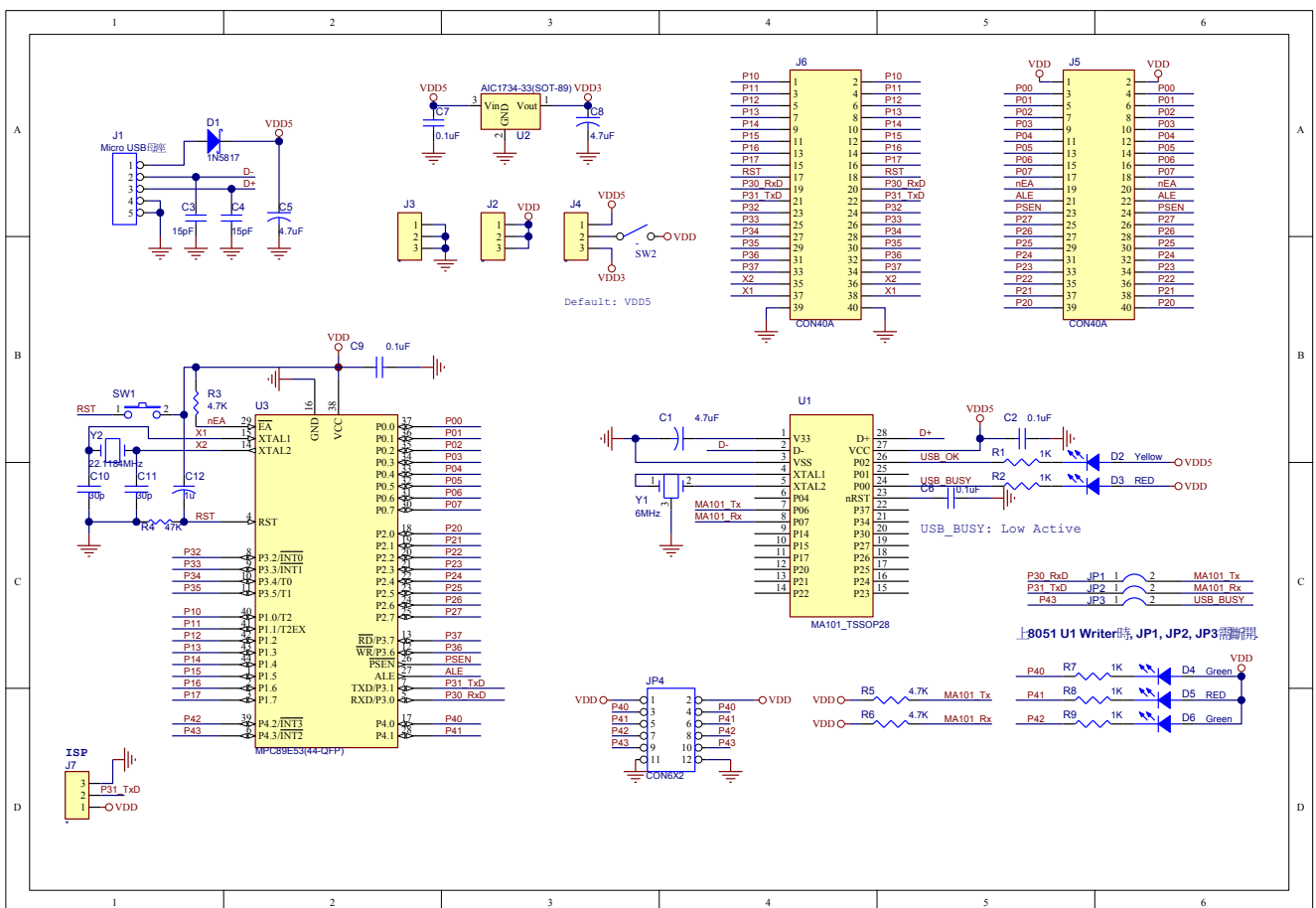
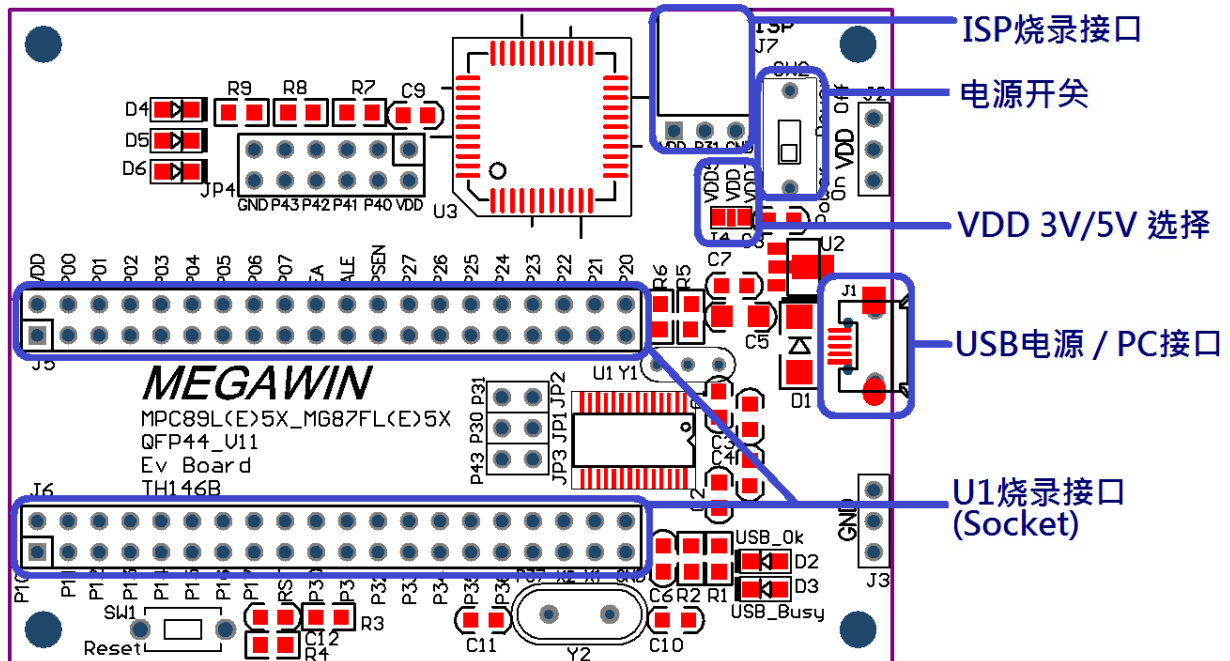
说明手册

Contents

1	89 Series	3
1-1	MPC89L(E)5X	3
2	82 Series	4
2-1	MA82G5A64	4
2-2	MA82G5B32	5
2-3	MA82G5C64	6
2-4	MA82G5D16	7
2-5	MG82G5EXX	8
2-6	MG82F6D17	9
3	86 Series	10
3-1	MA86X104	10
3-2	MA86X508	11
4	87 Series	12
4-1	MG87FL(E)5X	12
4-2	MG87FL(E)X051	13
5	MA Series	14
5-1	MA801	14
5-2	MA803	15
5-3	MA805-64	16
5-4	MA807	17
	Revision History	18

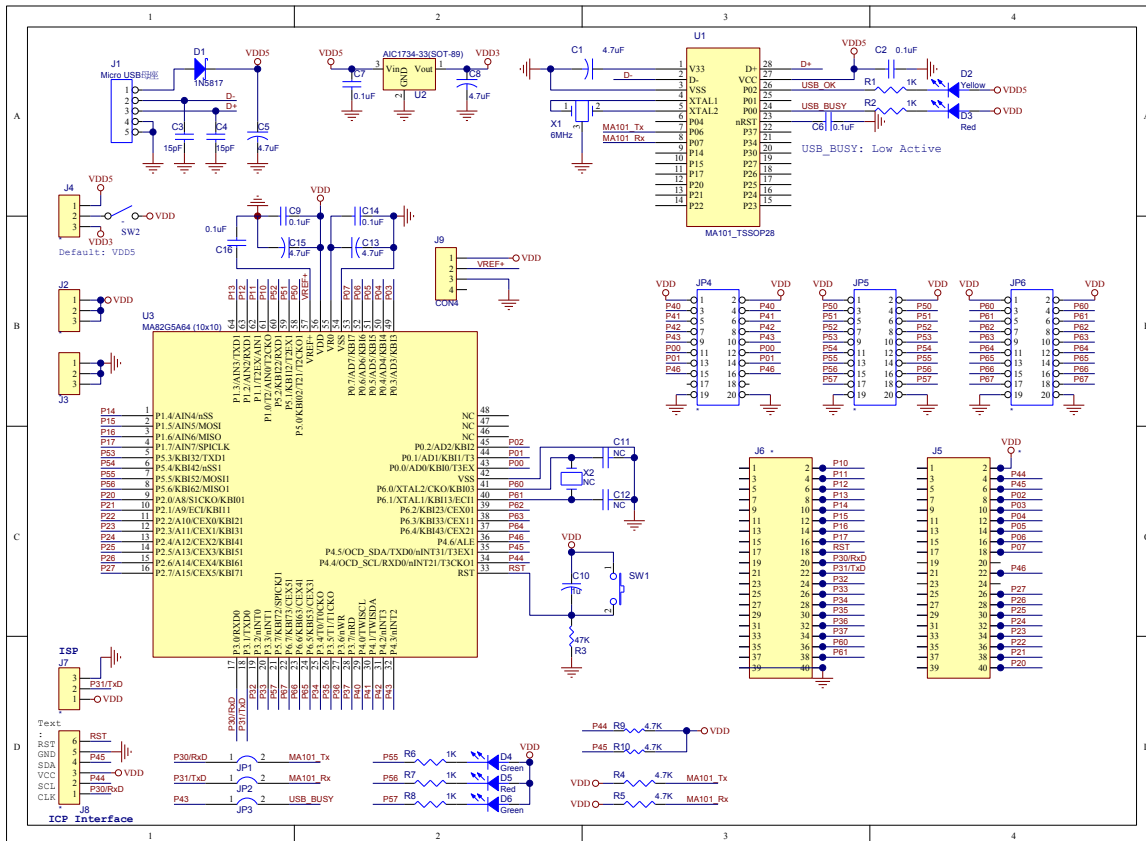
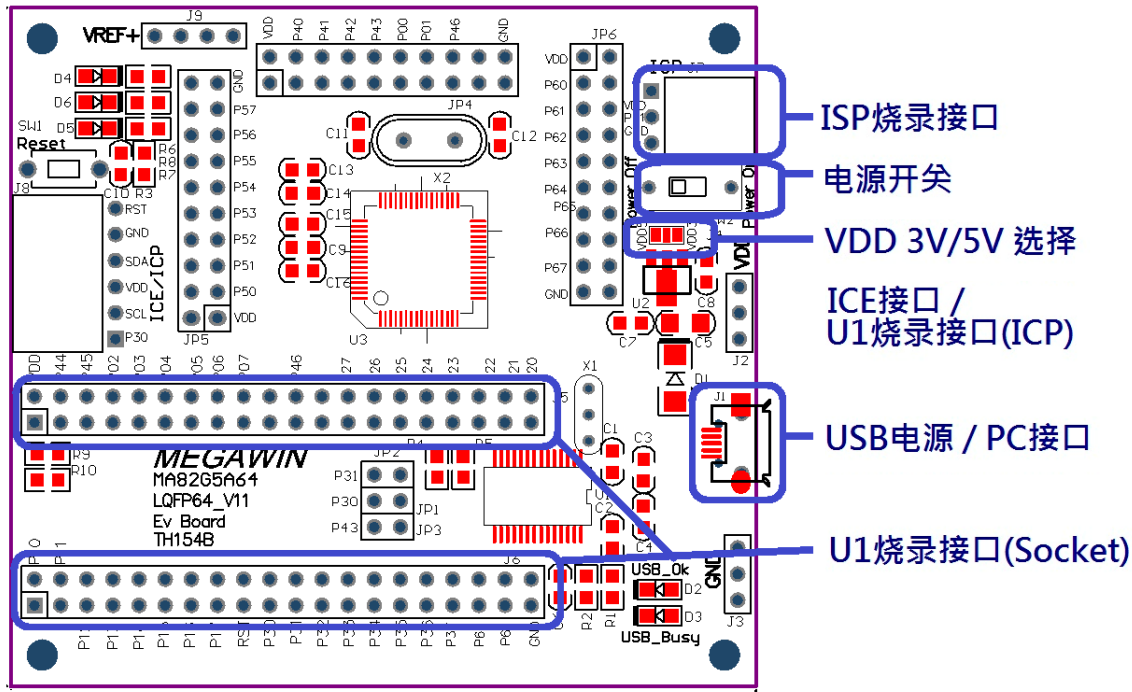
1 89 Series

1-1 MPC89L(E)5X

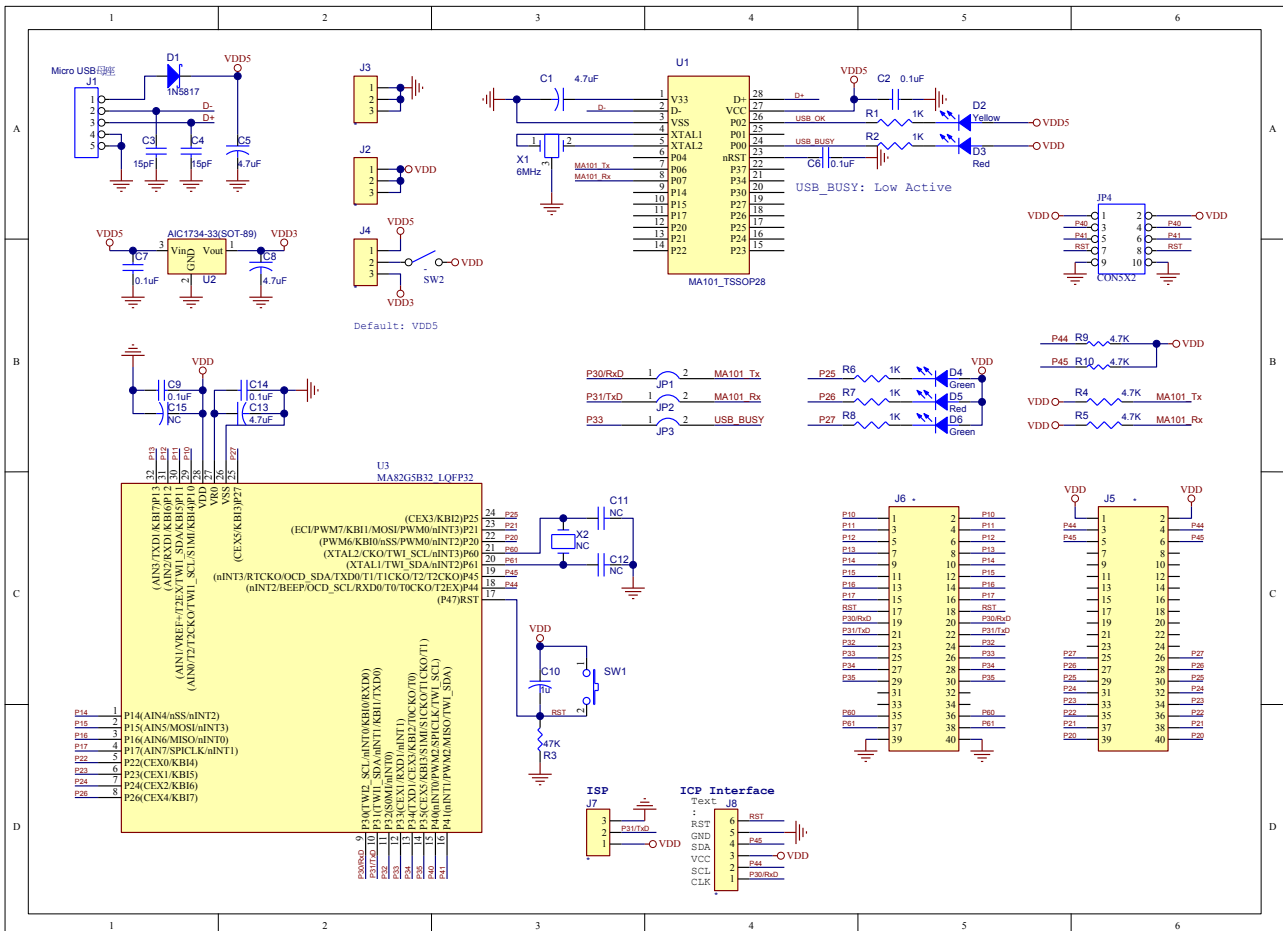
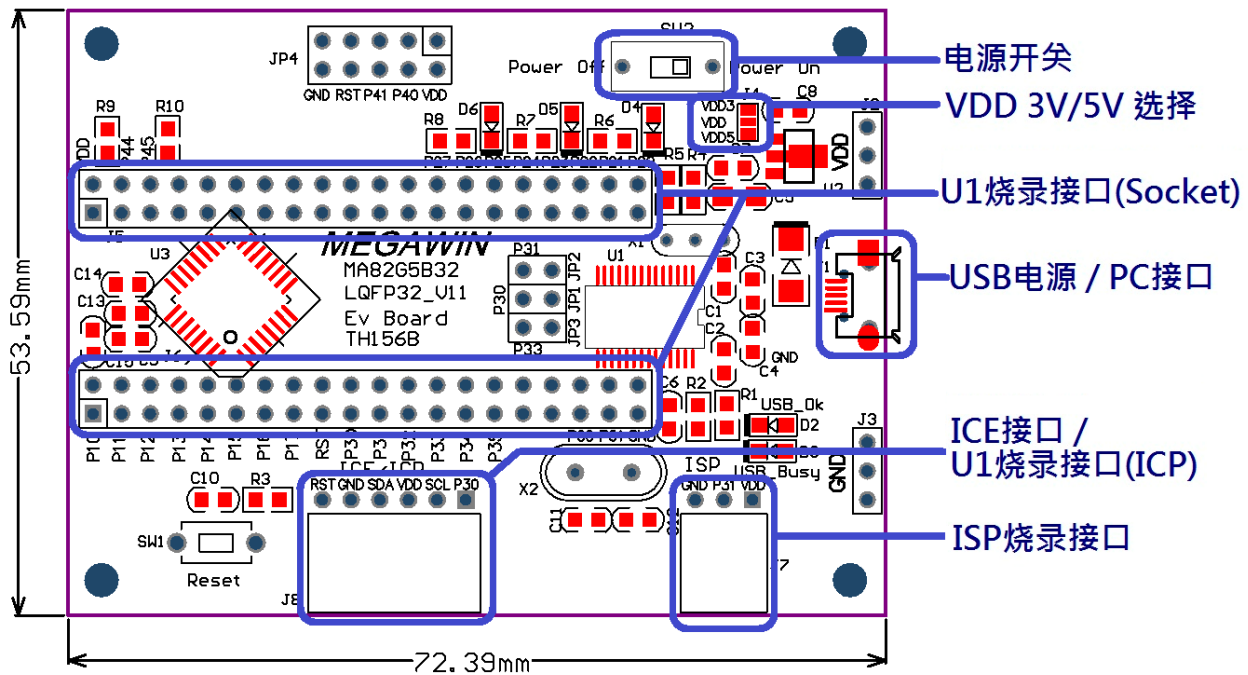


2 82 Series

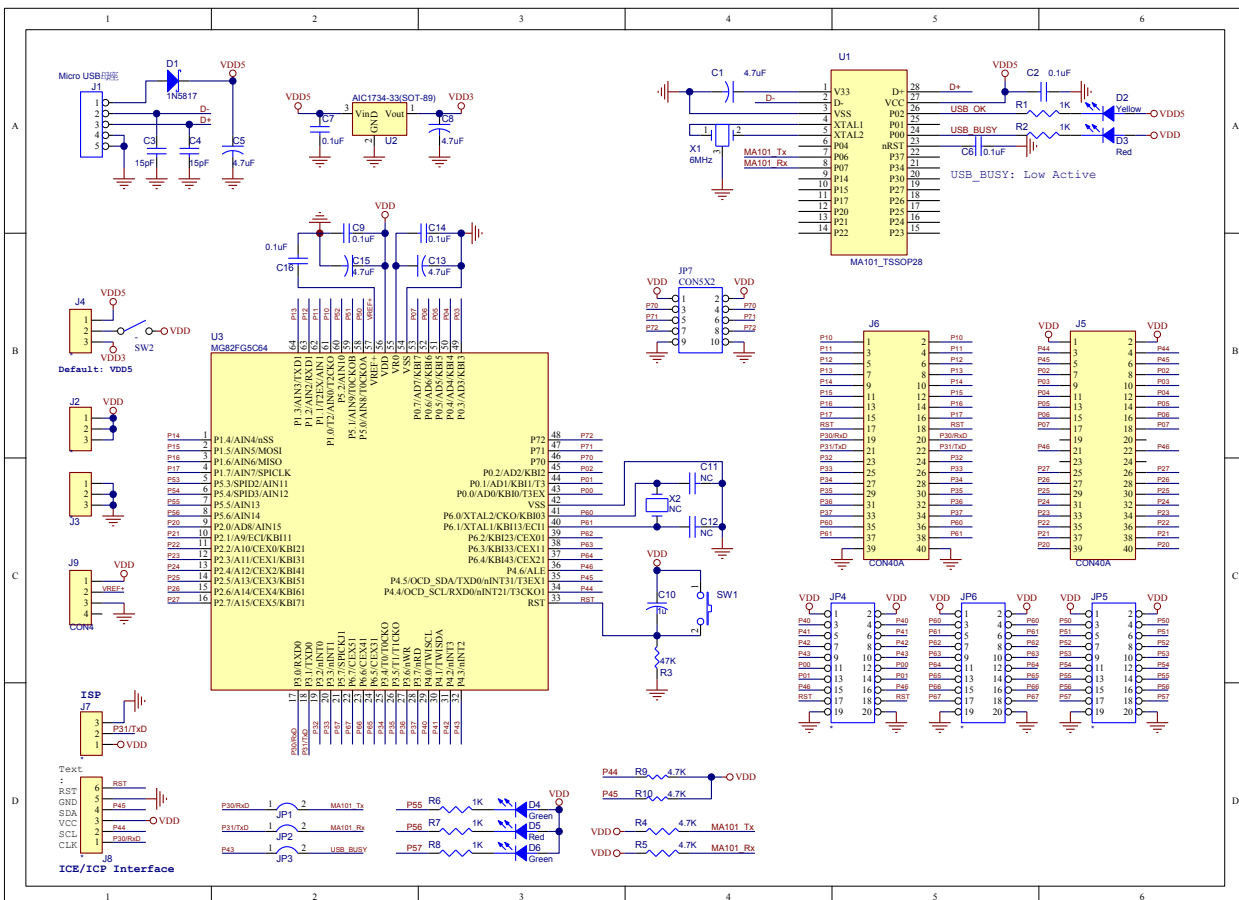
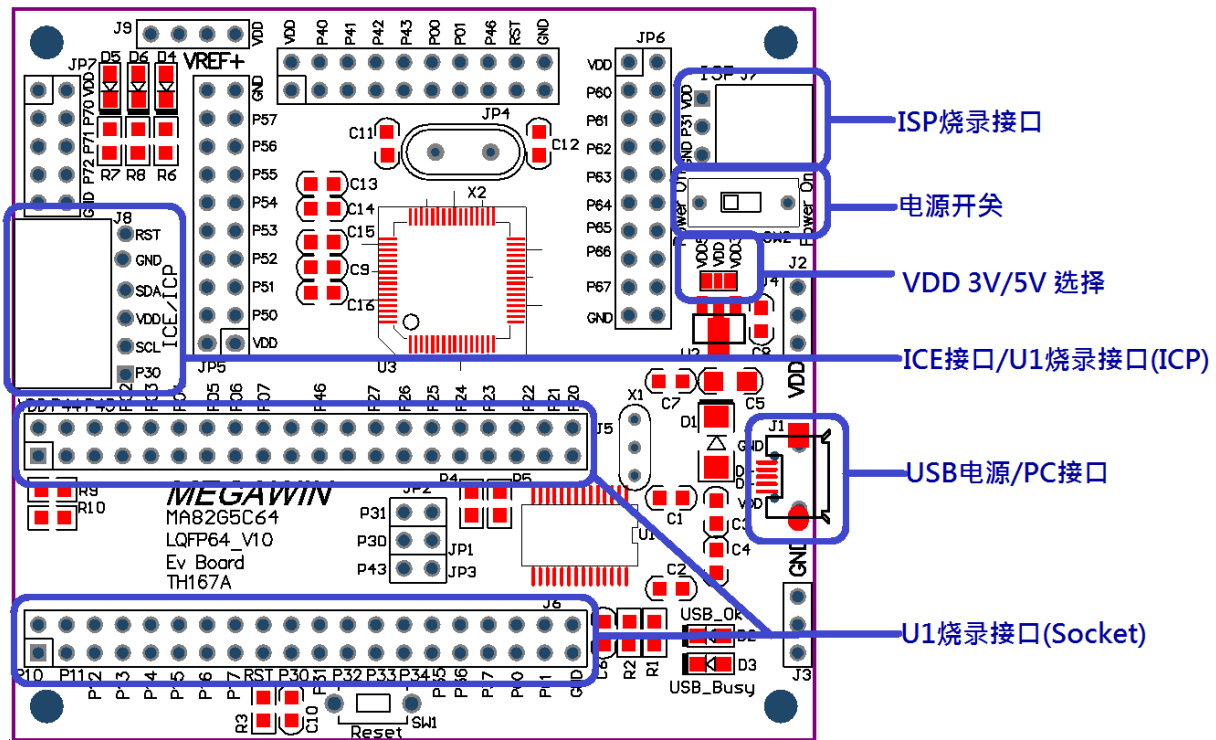
2-1 MA82G5A64



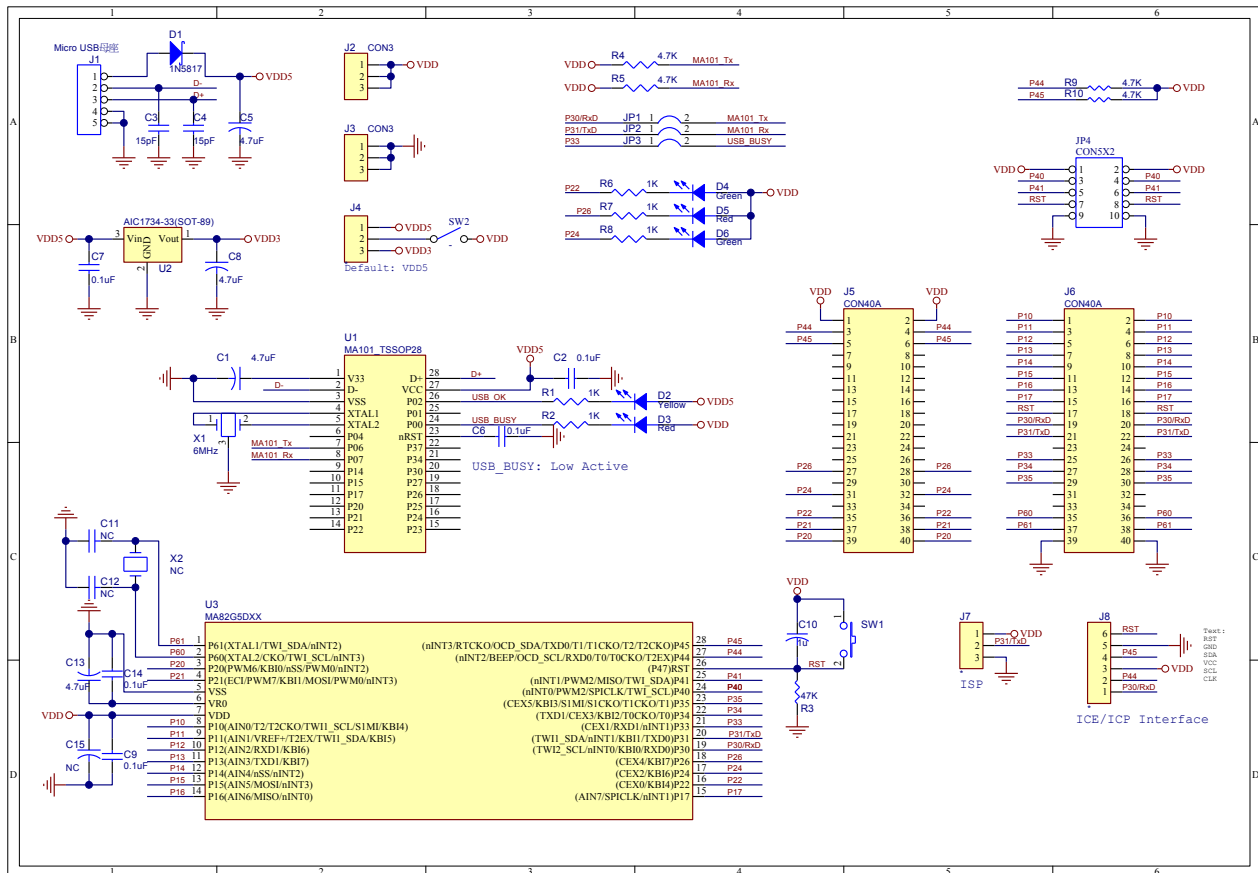
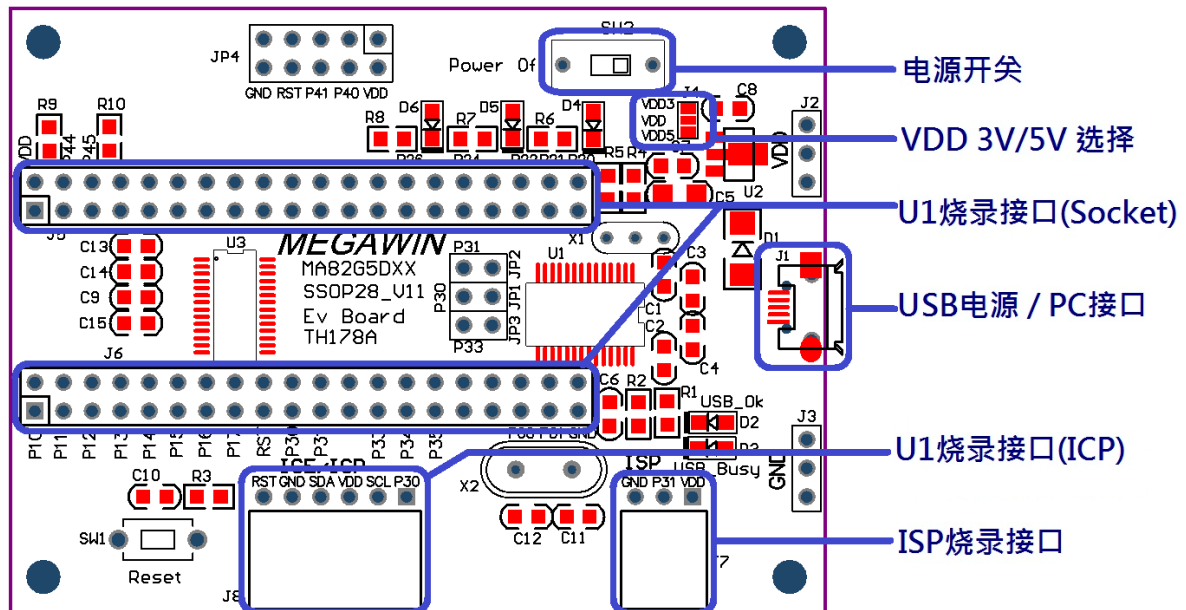
2-2 MA82G5B32



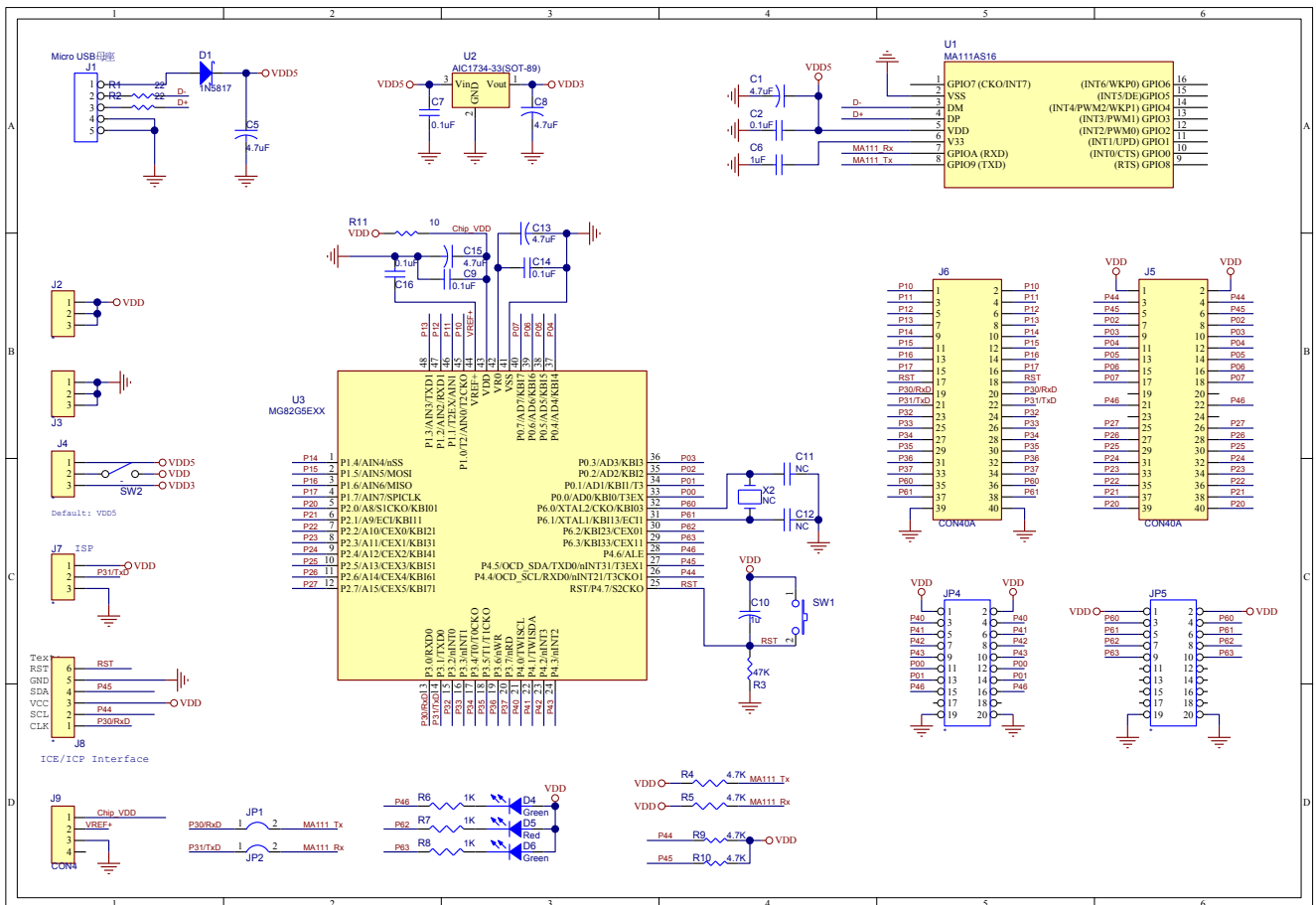
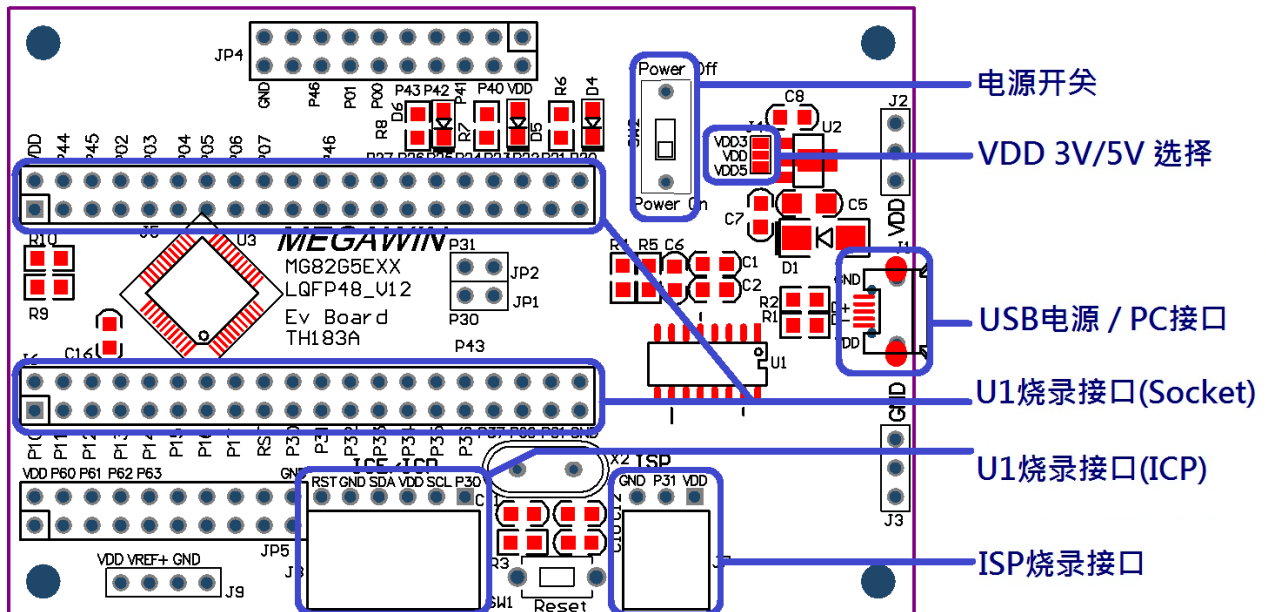
2-3 MA82G5C64



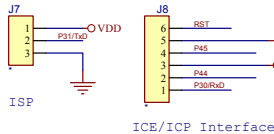
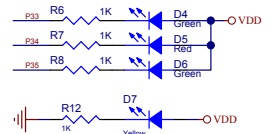
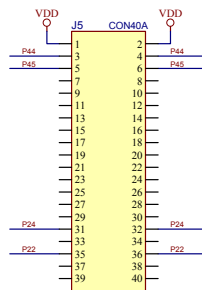
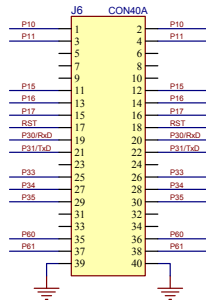
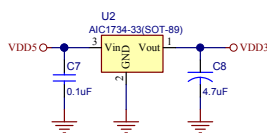
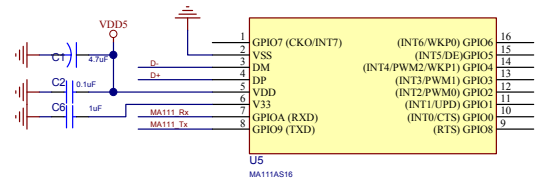
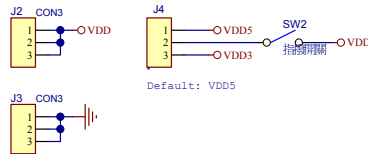
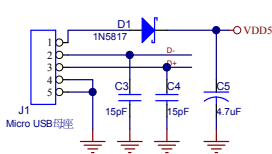
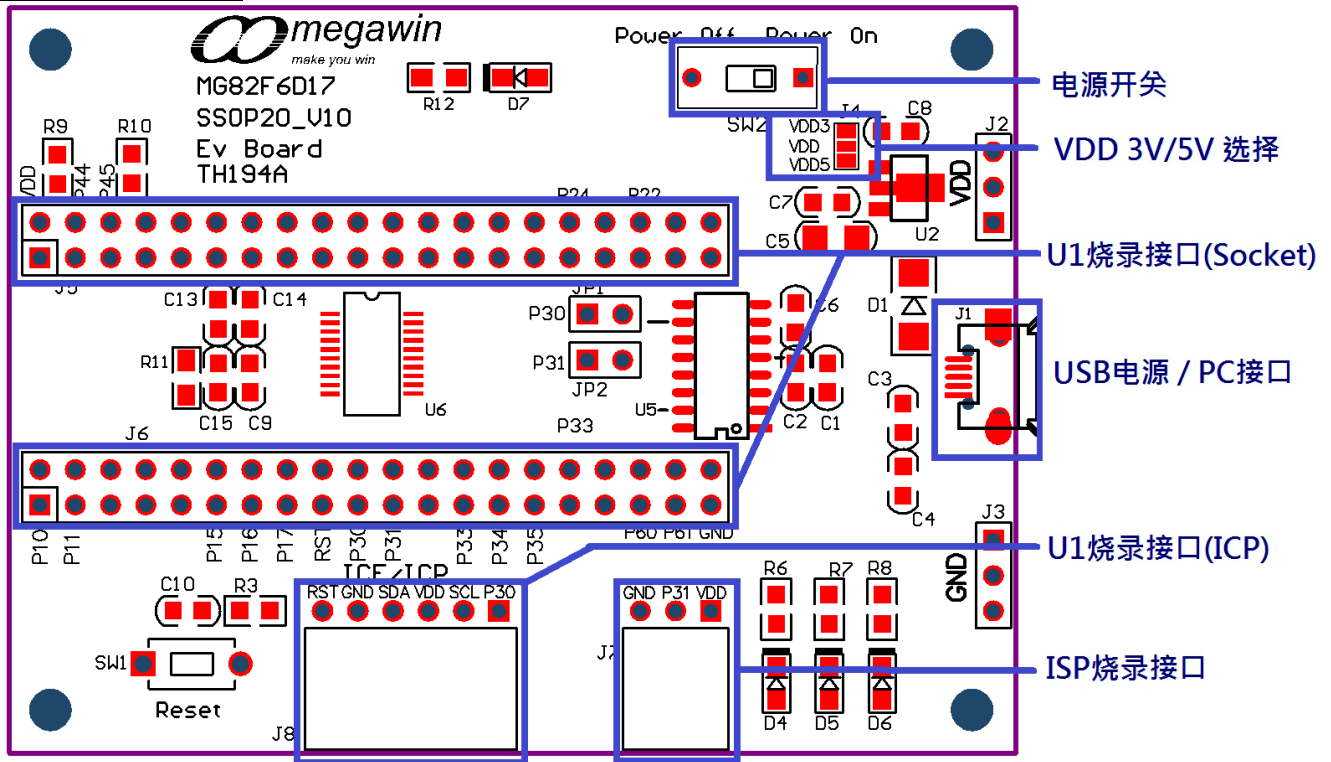
2-4 MA82G5D16



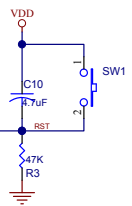
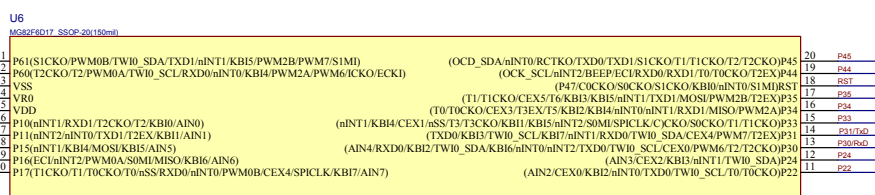
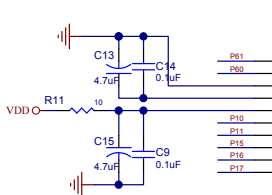
2-5 MG82G5EXX



2-6 MG82F6D17

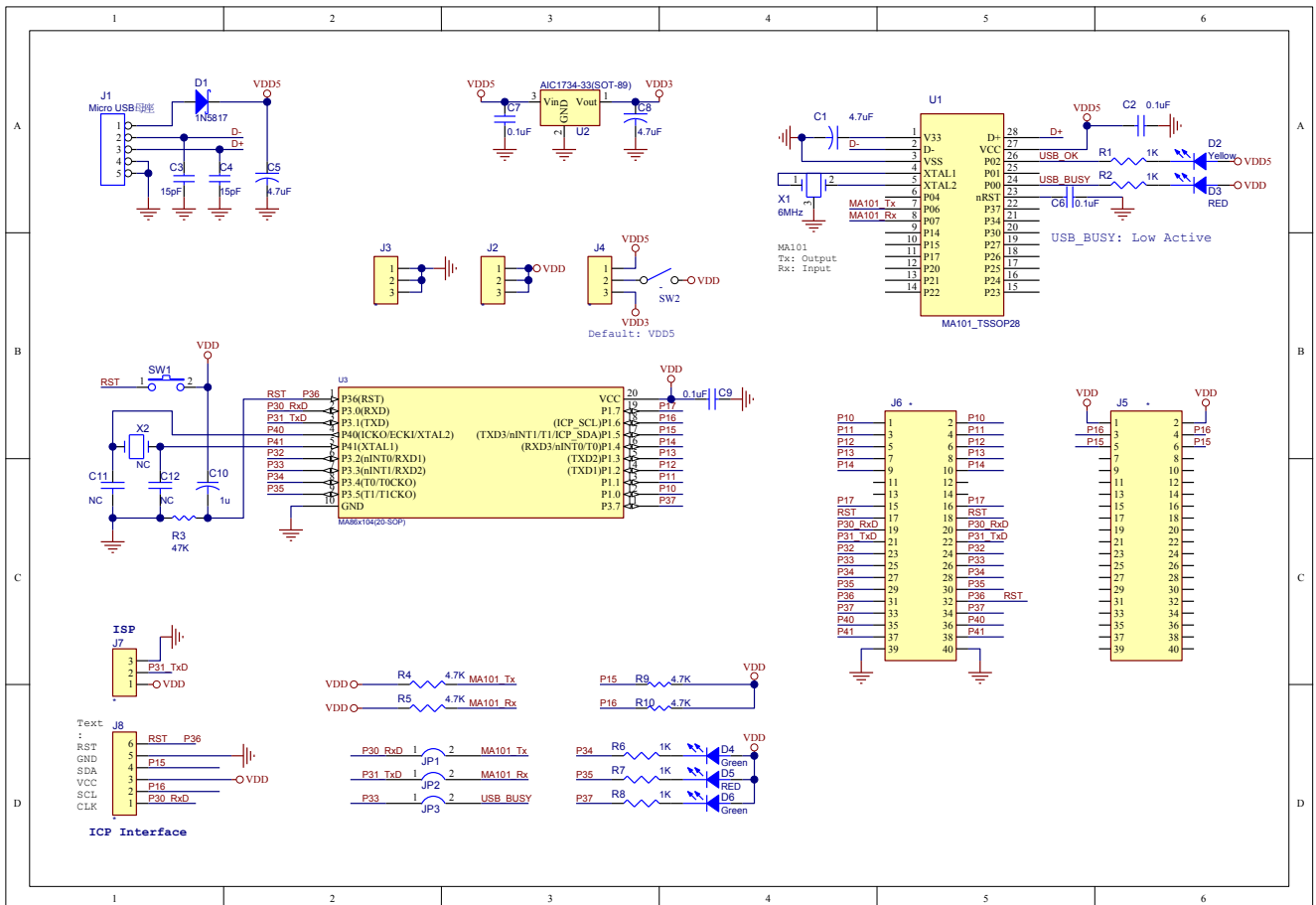
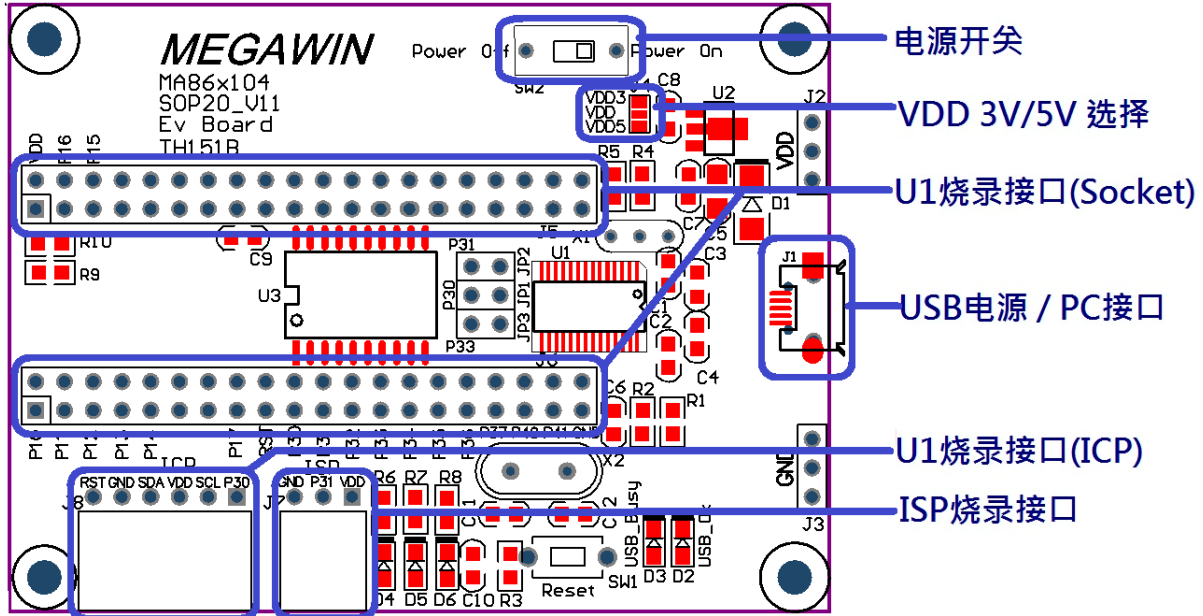


ICE/ICP Interface

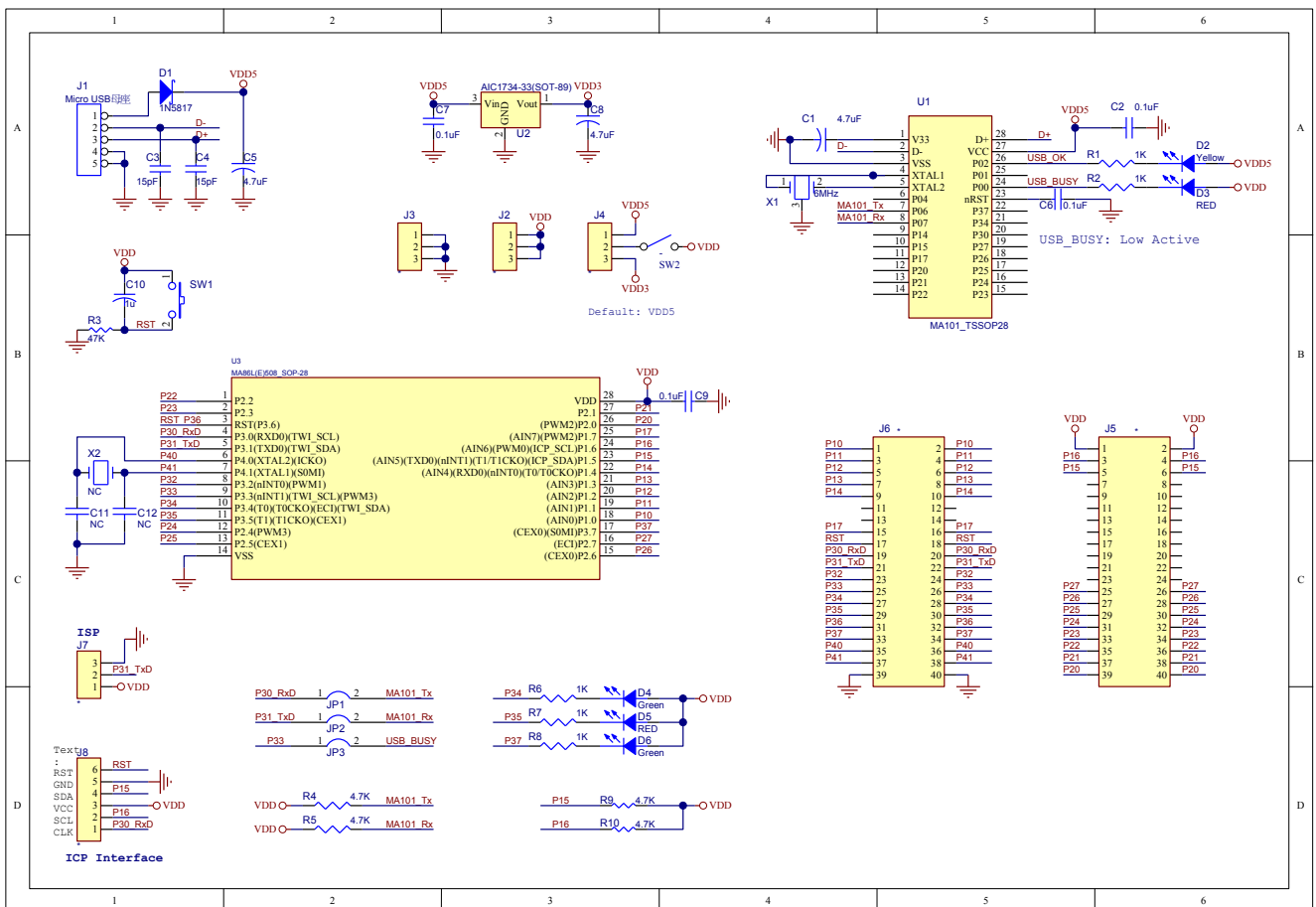
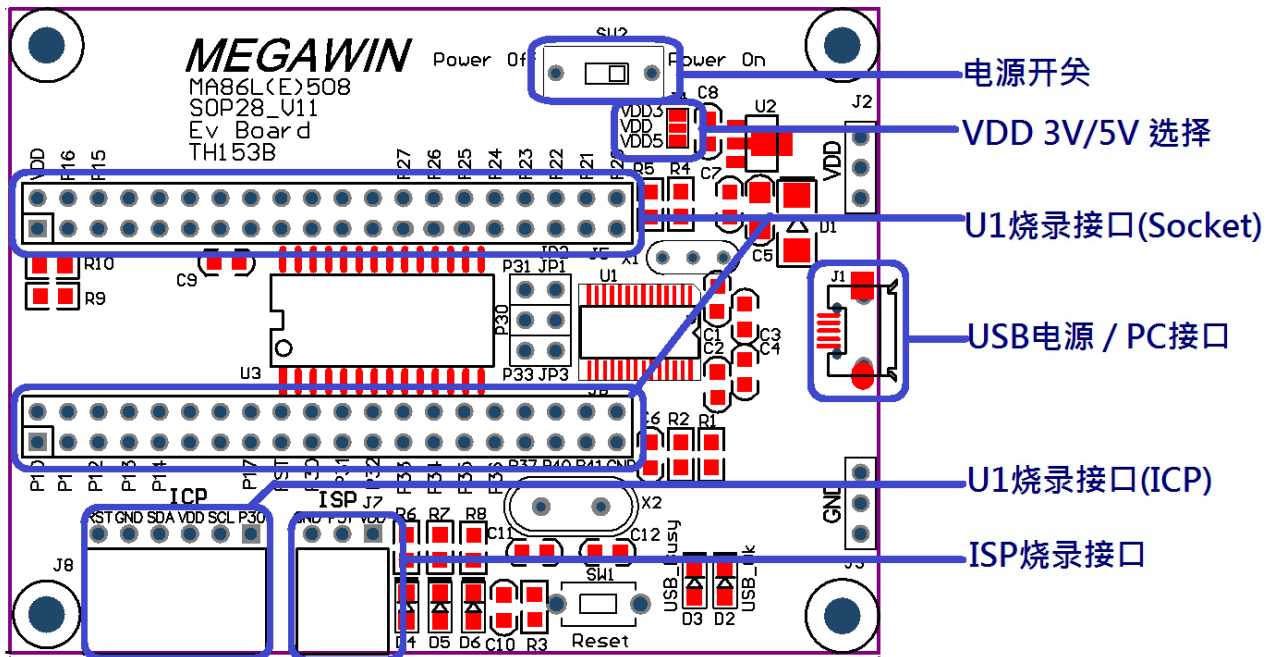


3 86 Series

3-1 MA86X104

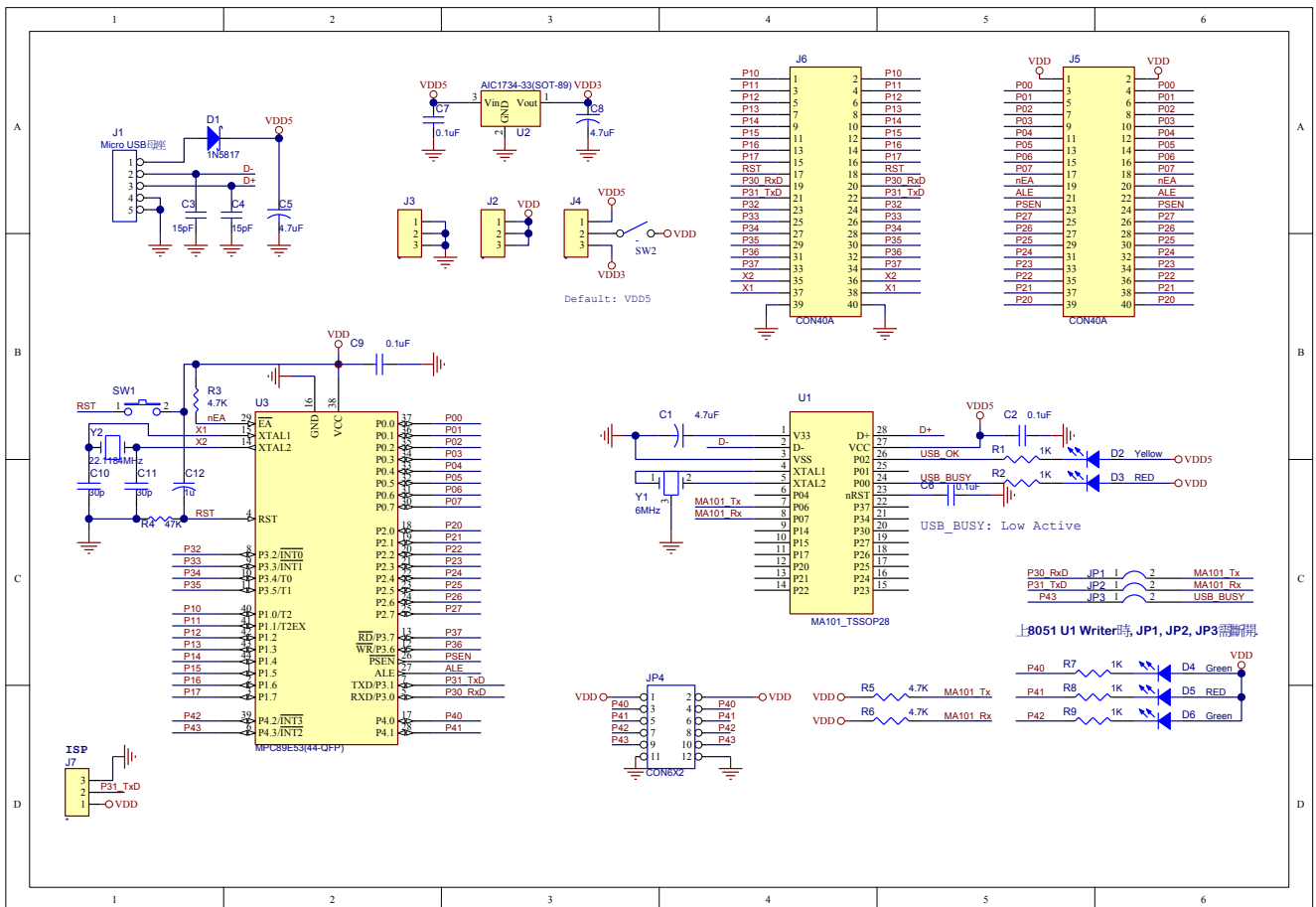
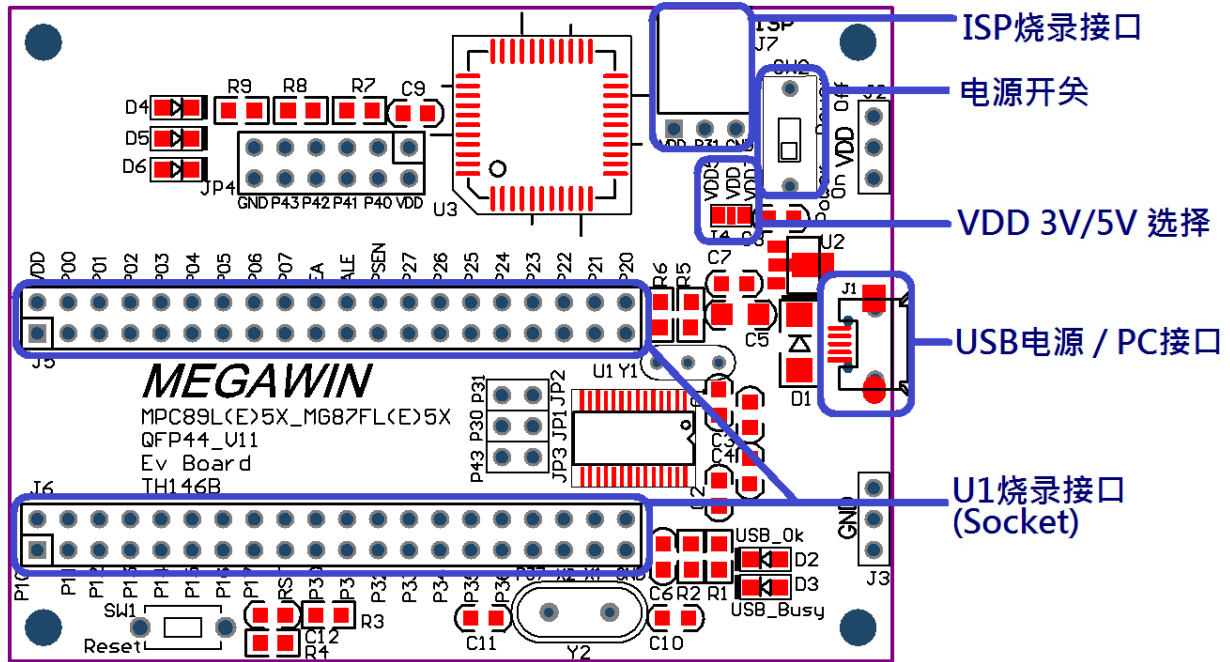


3-2 MA86X508

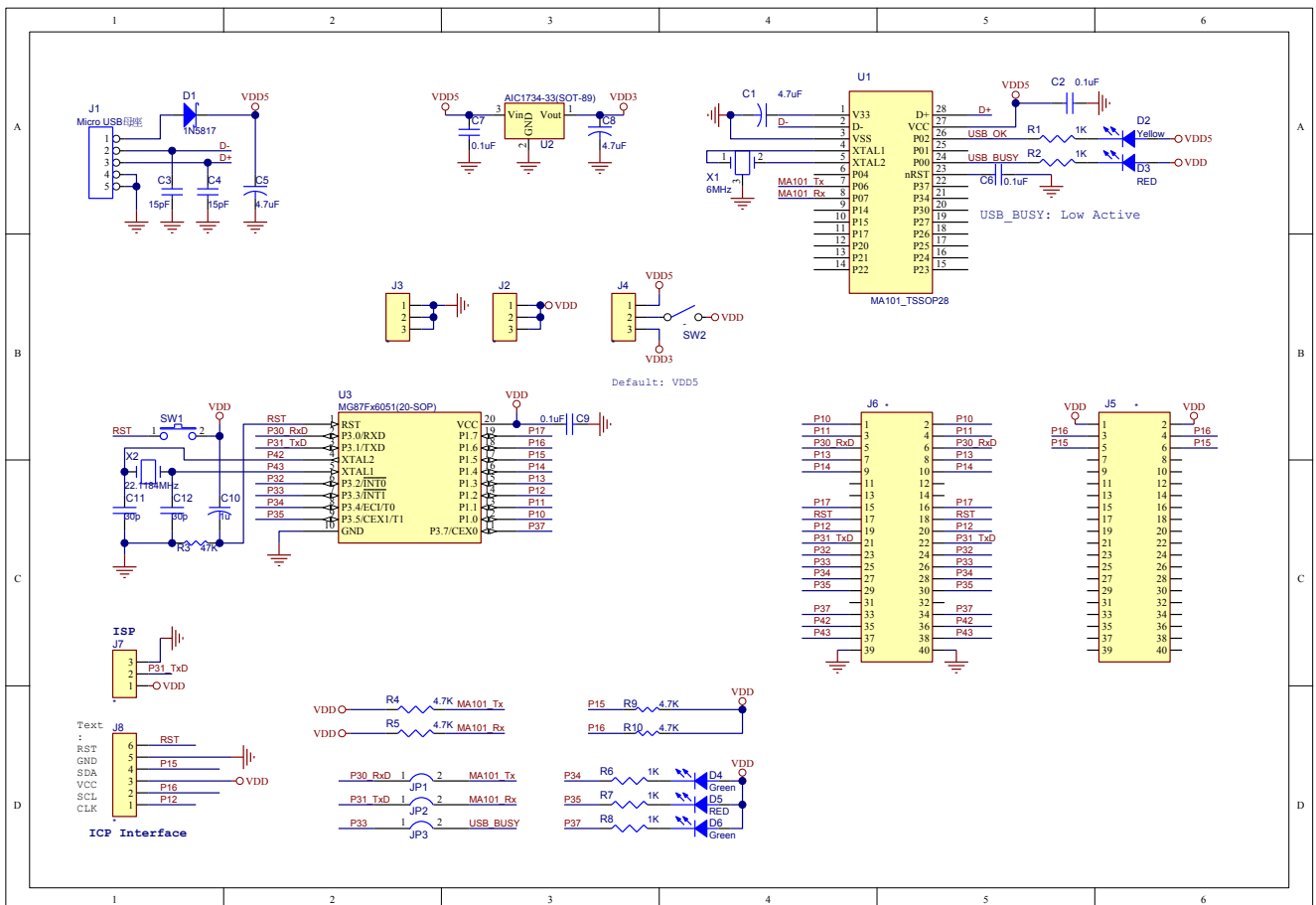
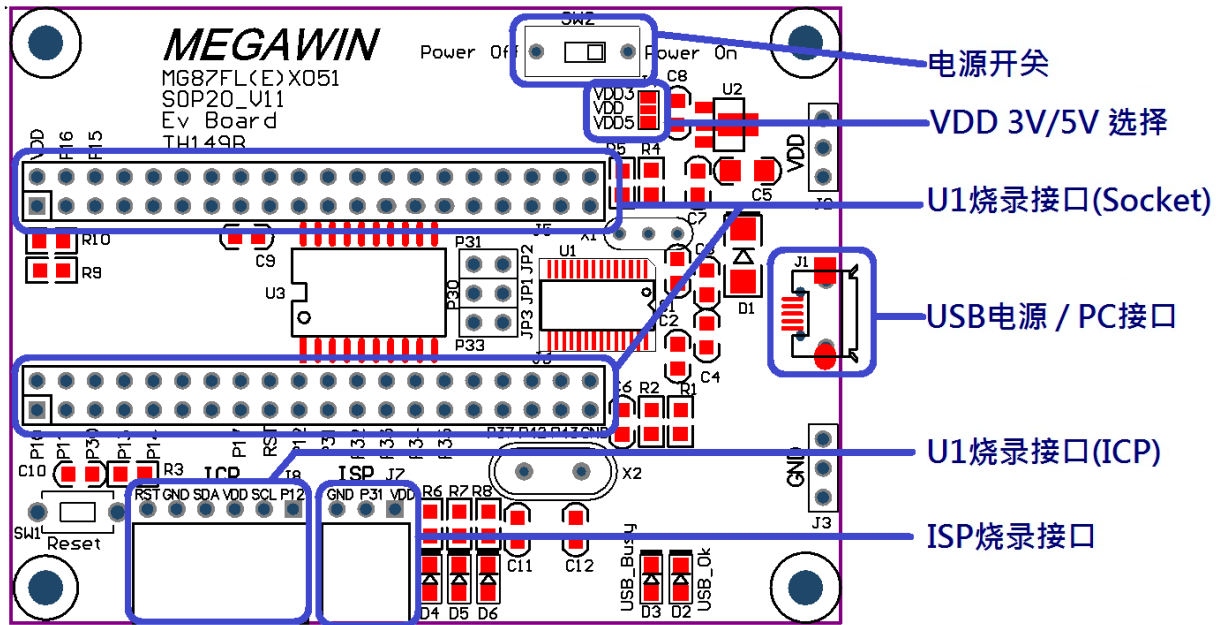


4 87 Series

4-1 MG87FL(E)5X

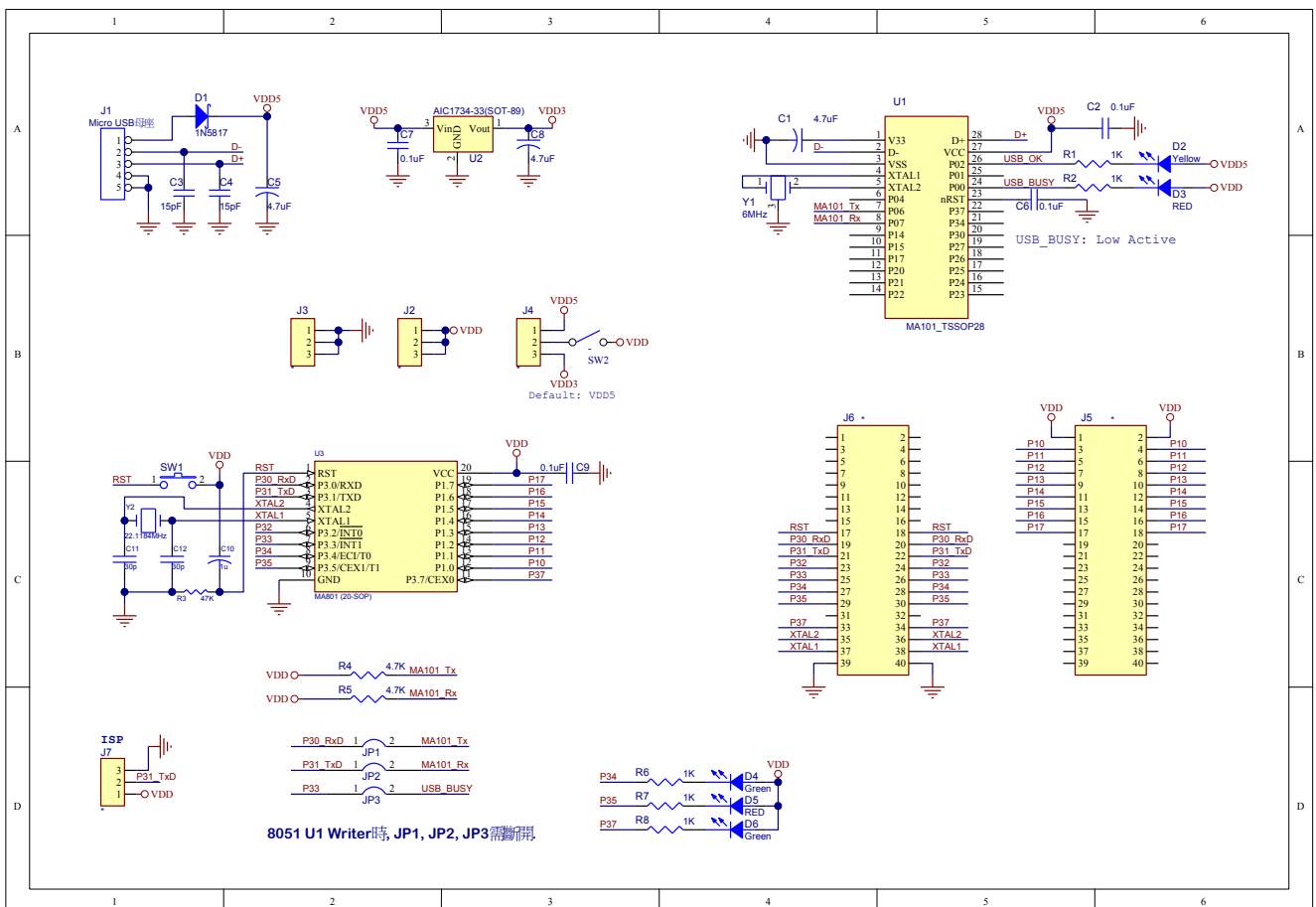
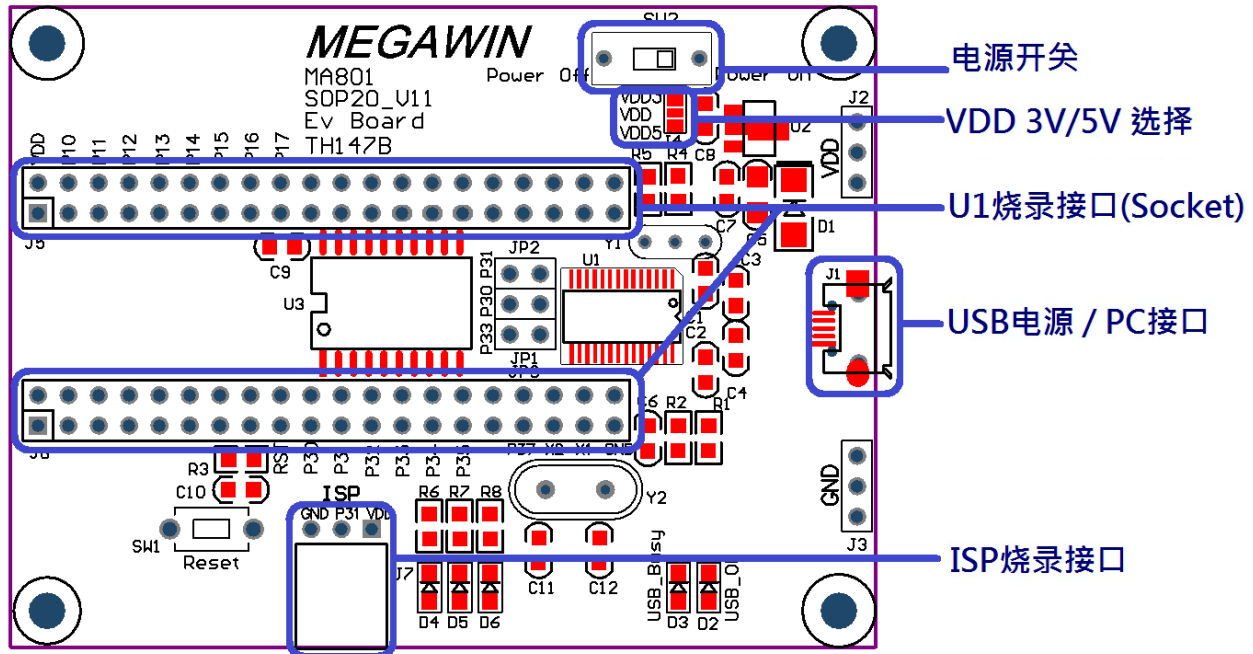


4-2 MG87FL(E)X051

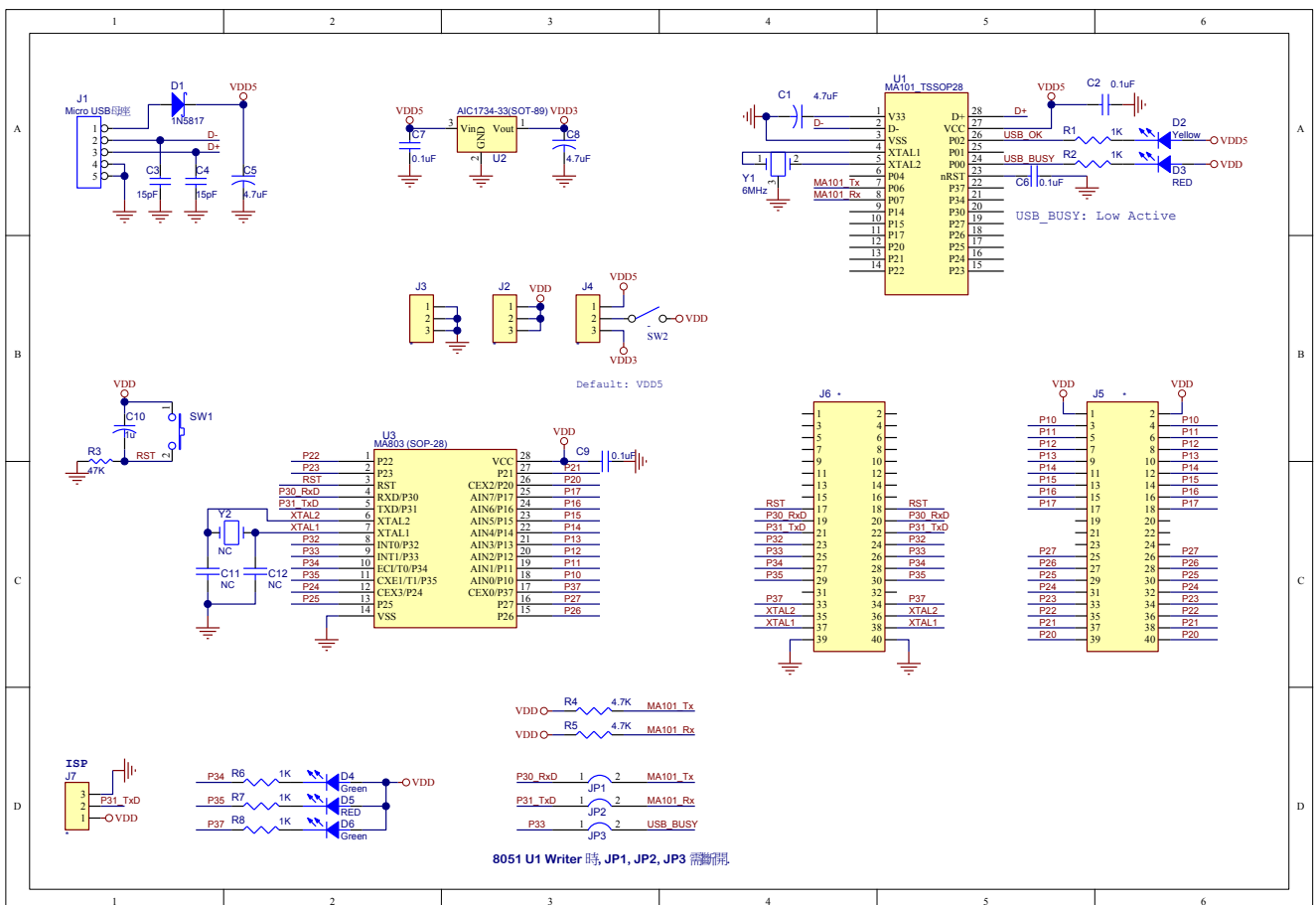
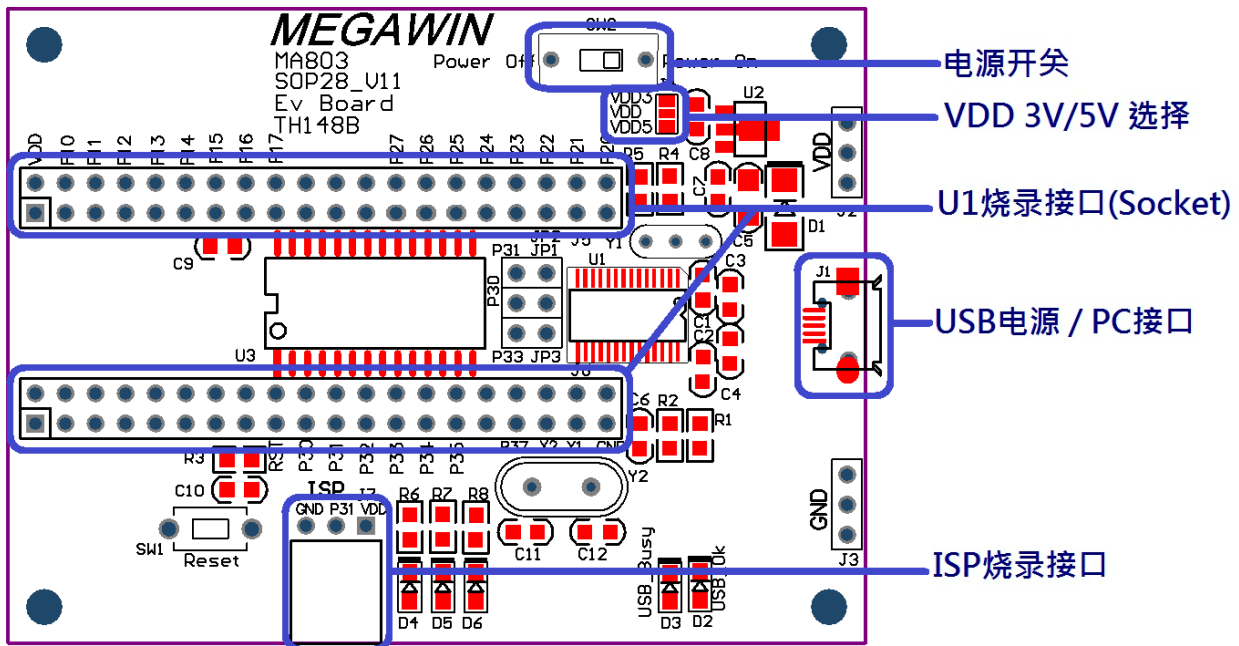


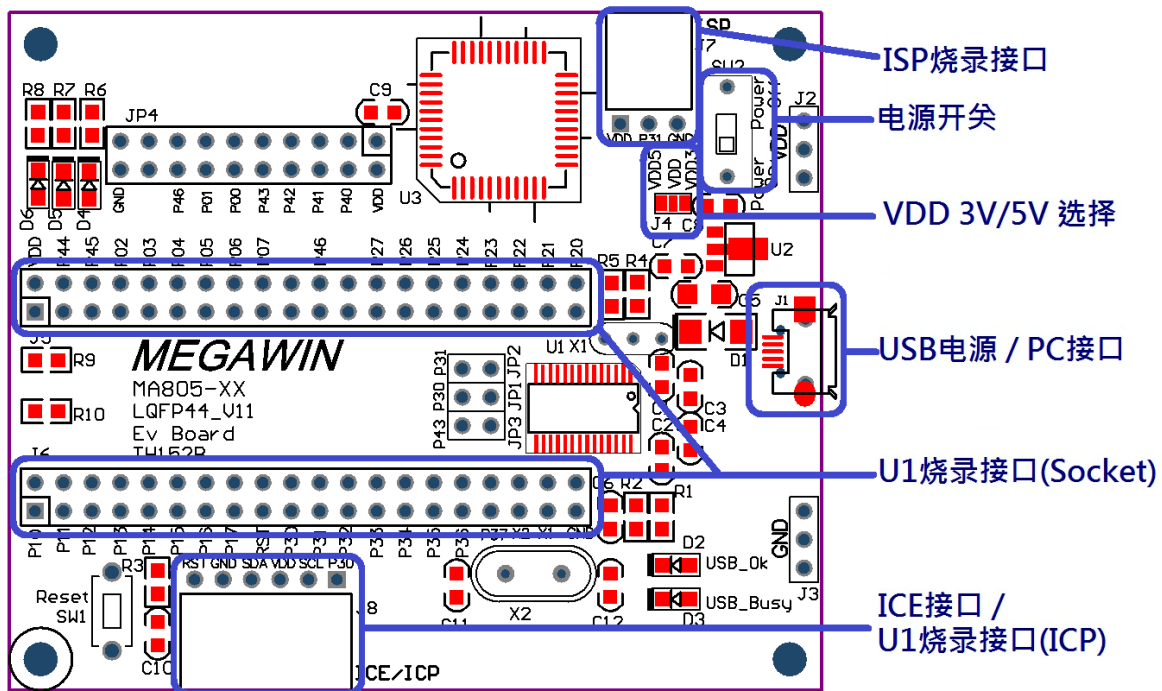
5 MA Series

5-1 MA801

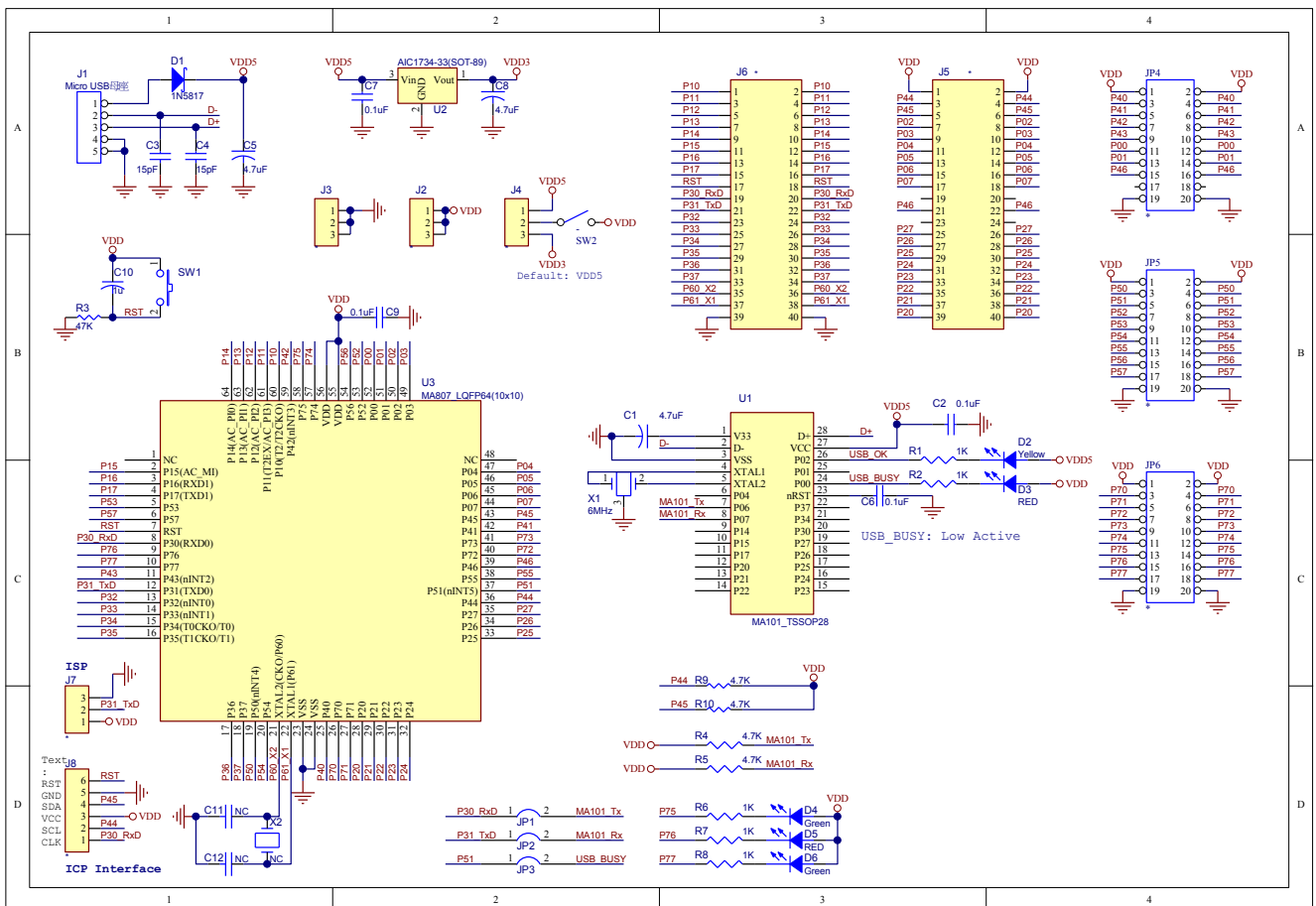
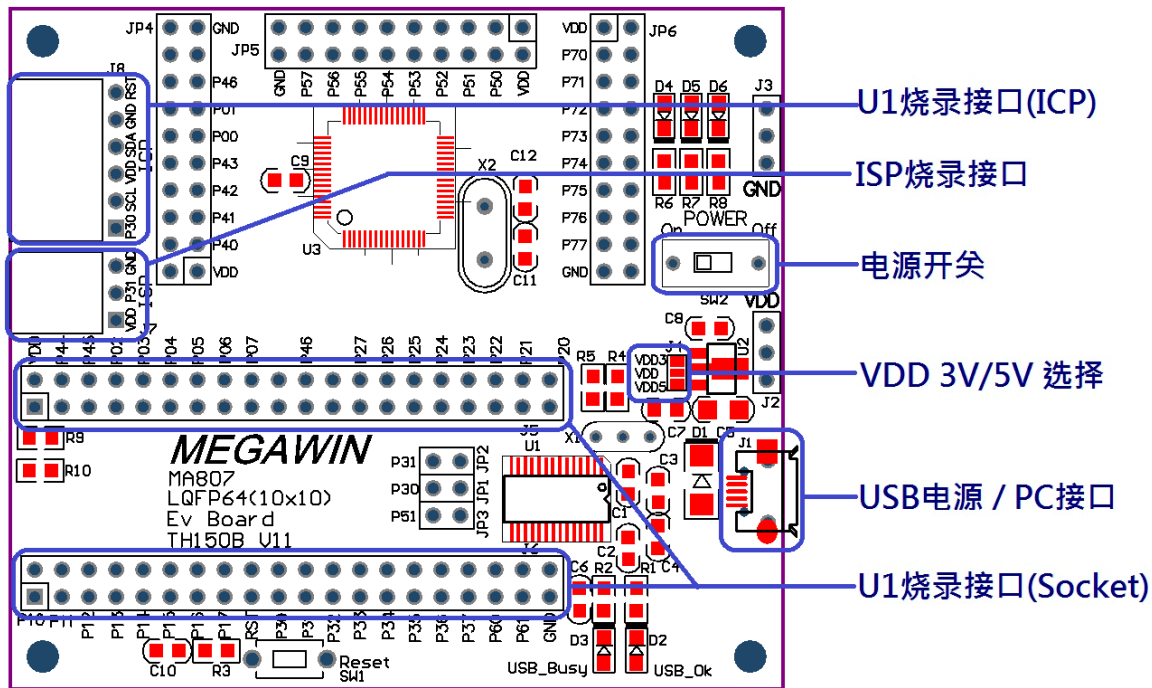


5-2 MA803



5-3 MA805-64


5-4 MA807



Revision History

Revision	Description	Date
V1.00	(1) New Create.	2013/09/02
V1.10	(1) 支持“电源开关”	2014/09/10
V1.20	(1) 新增“MA82G5C64”	2015/04/23
V1.30	(1) 新增“MA82G5D16”	2018/01/10
V1.40	(1) 新增“MG82G5Exx”	2018/07/20
V1.50	(1) 新增“MG82F6D17”	2019/03/20