

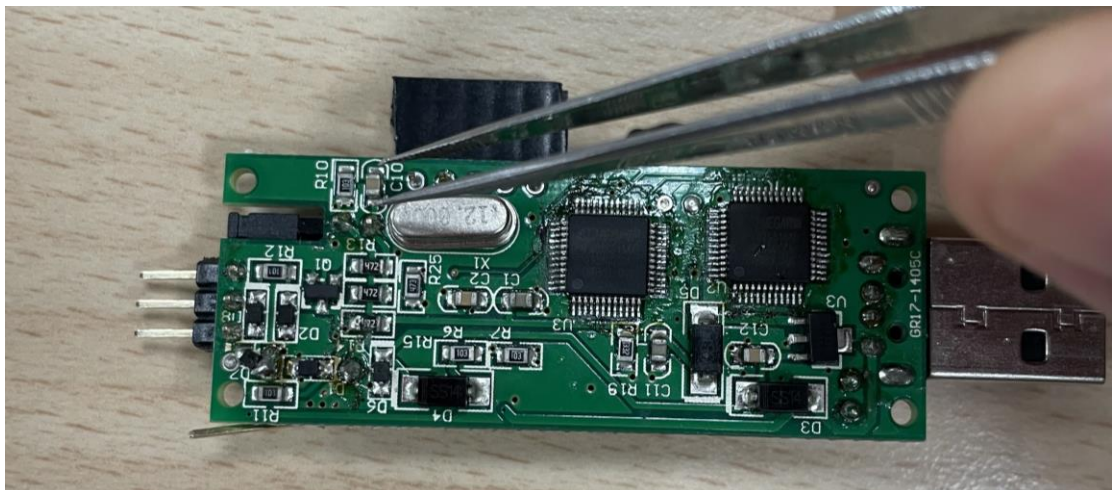
## How to recover the ISP Programmer

It is possible that ISP Programmer resides in the error state and not able to perform any further function. So, check your ISP Programmer when following conditions fit your situation:

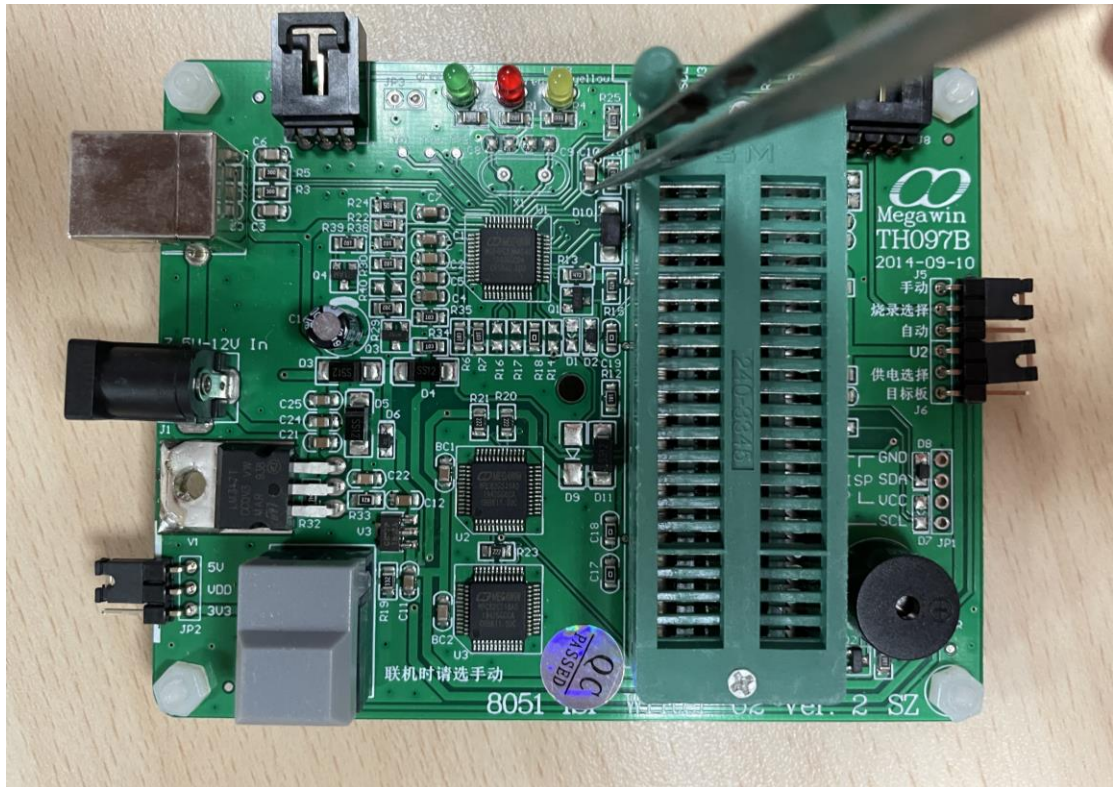
1. No LED light when power on.
2. Has LED light at power on but UVCView.exe program does **not** detect the "ISP Programmer".

Please follow the correction steps to recover the ISP Programmer.

1. Remove the case of the ISP Programmer.
2. Connect the USB cable .
3. Short C10 capacitor a while (shown as the following).

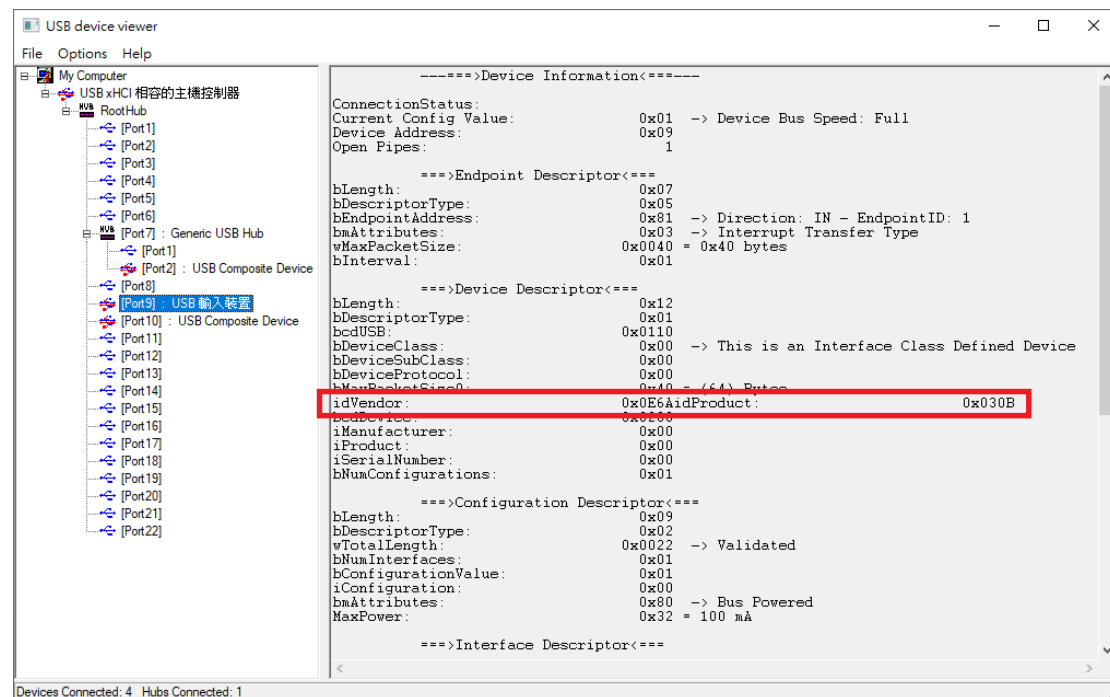


(ISP Programmer)

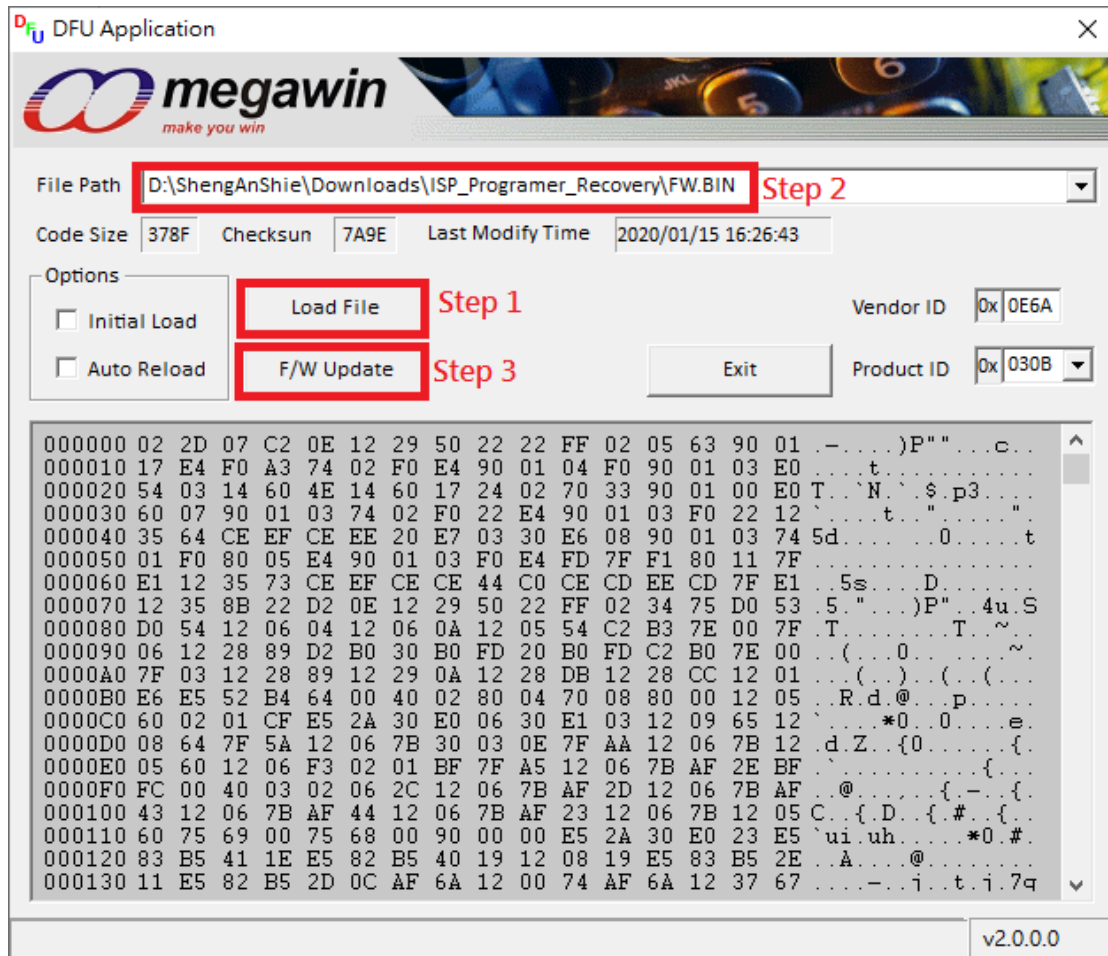


(Writer U2)

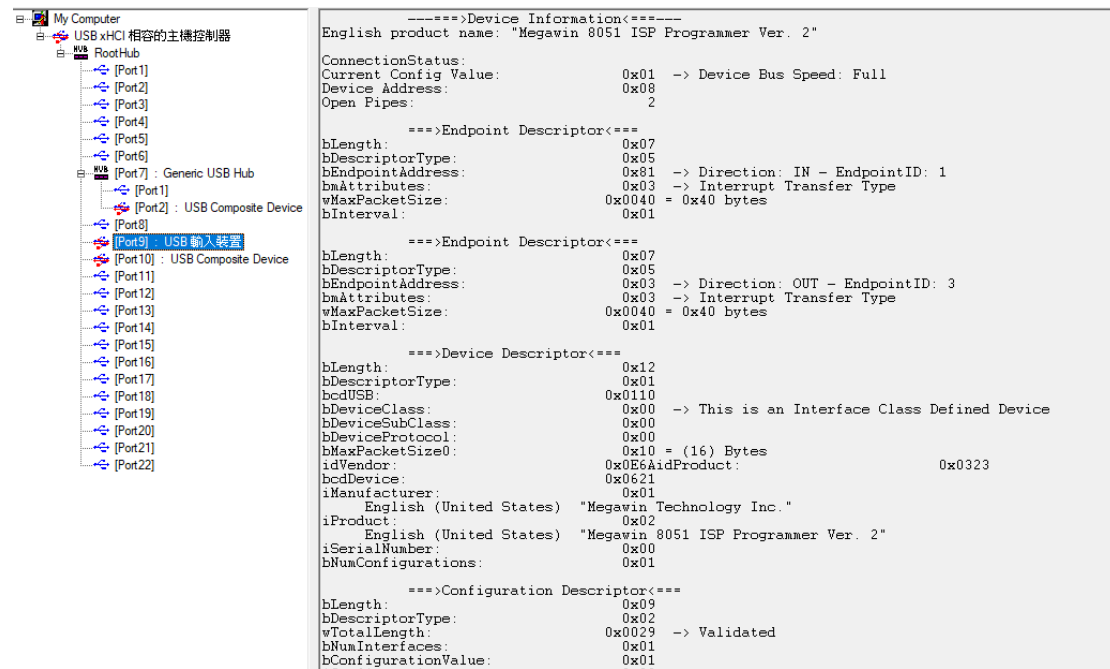
4. Check UVCView.exe to see if a device with VID: **0x0E6A** and PID: **0x030B** exist.



5. Run "DFU.exe" and click "Load File" select "FW.BIN", then click "F/W Update" to recover the ISP Programmer.



We should get a working “ISP Programmer” on the UVCView.exe.



The image shows a Windows Device Manager window on the left and the UVCView.exe application window on the right. The Device Manager window displays the USB tree structure, with 'USB 输入装置' (USB Input Device) selected under 'USB 复合设备' (USB Composite Device). The UVCView.exe window displays the following information:

```
-----Device Information-----
English product name: "Megawin 8051 ISP Programmer Ver. 2"
ConnectionStatus:
Current Config Value: 0x01 -> Device Bus Speed: Full
Device Address: 0x08
Open Pipes: 2

====>Endpoint Descriptor<====
bLength: 0x07
bDescriptorType: 0x05
bEndpointAddress: 0x81 -> Direction: IN - EndpointID: 1
bmAttributes: 0x03 -> Interrupt Transfer Type
wMaxPacketSize: 0x0040 = 0x40 bytes
bInterval: 0x01

====>Endpoint Descriptor<====
bLength: 0x07
bDescriptorType: 0x05
bEndpointAddress: 0x03 -> Direction: OUT - EndpointID: 3
bmAttributes: 0x03 -> Interrupt Transfer Type
wMaxPacketSize: 0x0040 = 0x40 bytes
bInterval: 0x01

====>Device Descriptor<====
bLength: 0x12
bDescriptorType: 0x01
bcdUSB: 0x0110
bDeviceClass: 0x00 -> This is an Interface Class Defined Device
bDeviceSubClass: 0x00
bDeviceProtocol: 0x00
bMaxPacketSize0: 0x10 = (16) Bytes
idVendor: 0x0E6AidProduct: 0x0323
bcdDevice: 0x0621
iManufacturer: 0x01
English (United States) "Megawin Technology Inc."
iProduct: 0x02
English (United States) "Megawin 8051 ISP Programmer Ver. 2"
iSerialNumber: 0x00
bNumConfigurations: 0x01

====>Configuration Descriptor<====
bLength: 0x09
bDescriptorType: 0x02
wTotalLength: 0x0029 -> Validated
bNumInterfaces: 0x01
bConfigurationValue: 0x01
```