

A

B

C

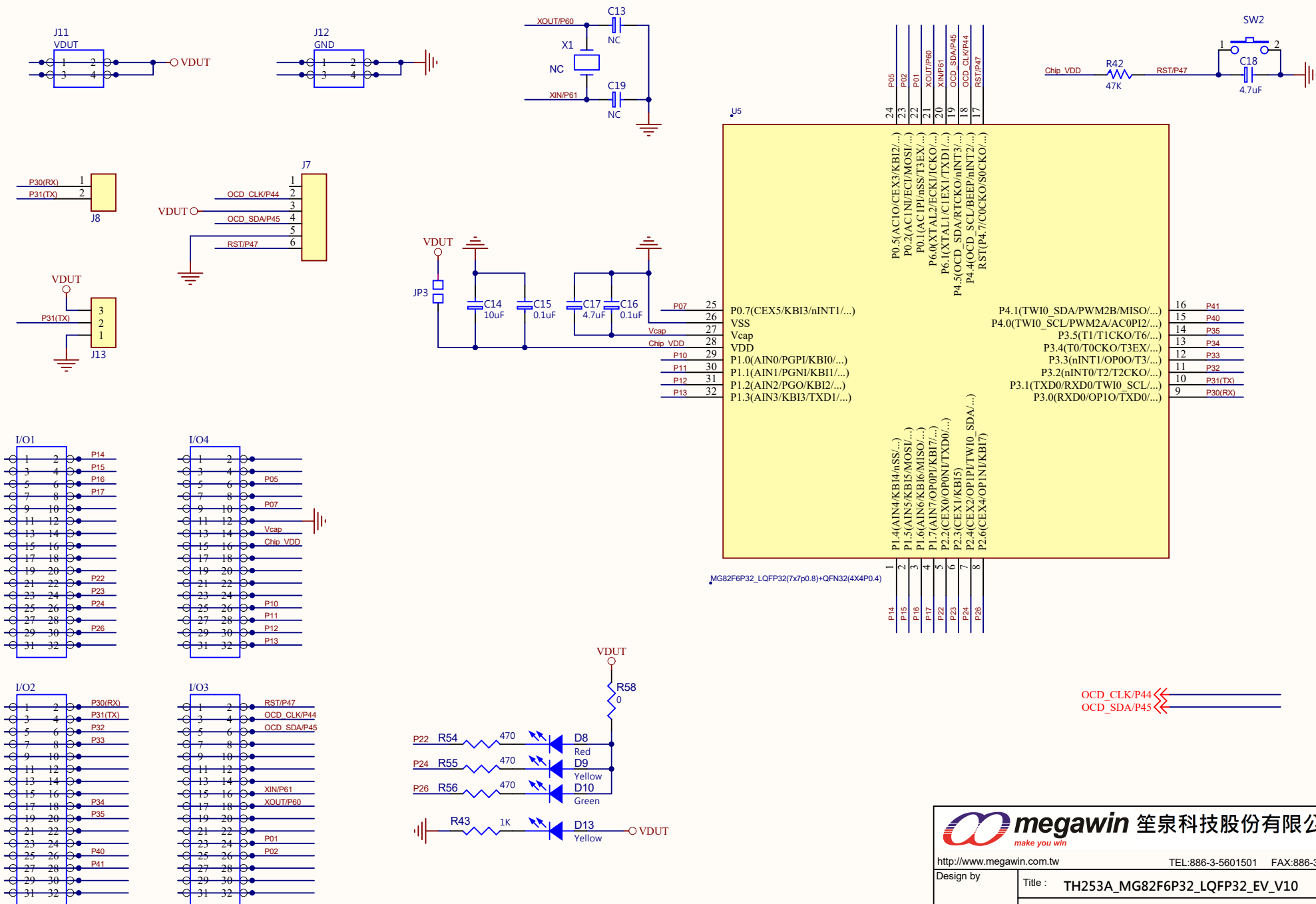
D

A

B

C

D



**megawin** 笙泉科技股份有限公司  
make you win

http://www.megawin.com.tw TEL:886-3-5601501 FAX:886-3-5601510

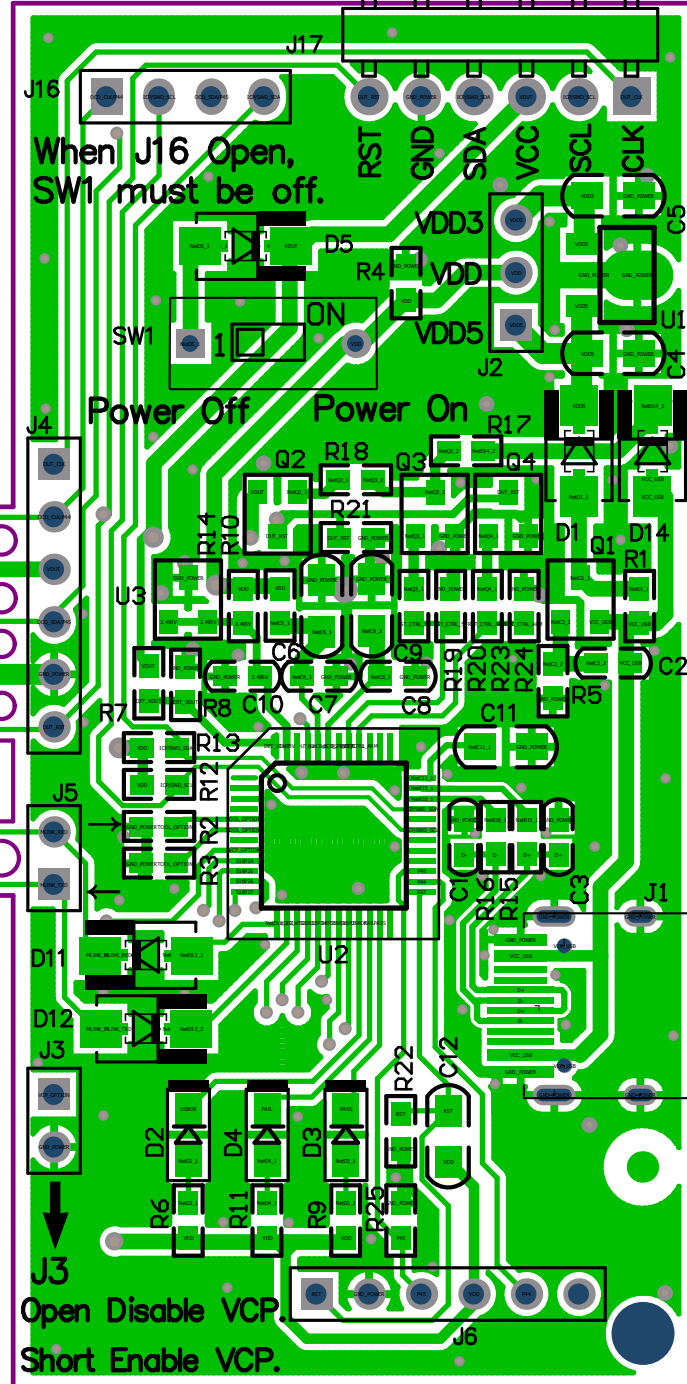
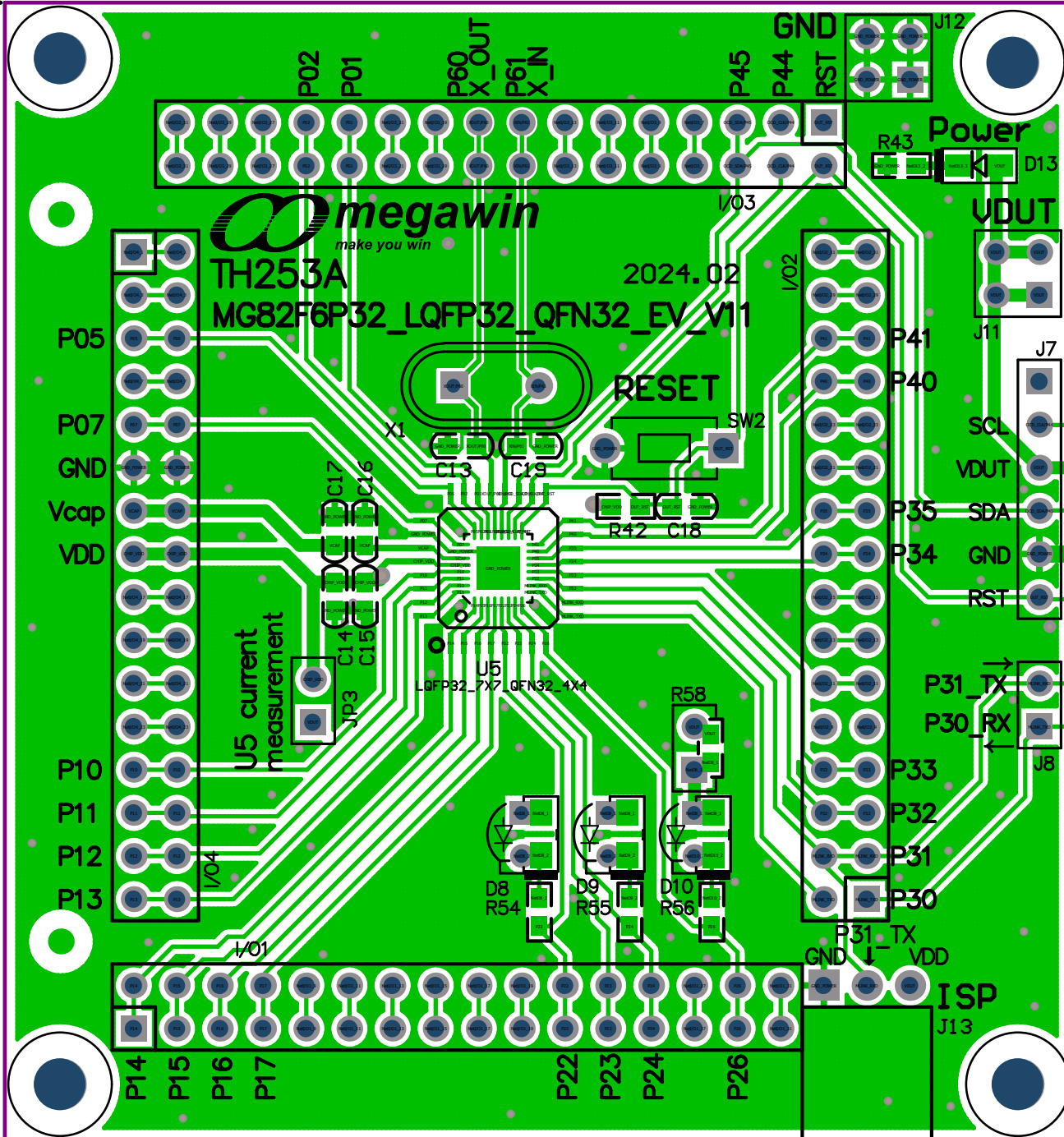
Design by	Title: TH253A_MG82F6P32_LQFP32_EV_V10		
	Doc.: 2_TH253A_MG82F6P32_LQFP32_EV_V11.SchDoc		
Size: A4	Date: 2024/4/1	Sheet: 2 page	Rev:

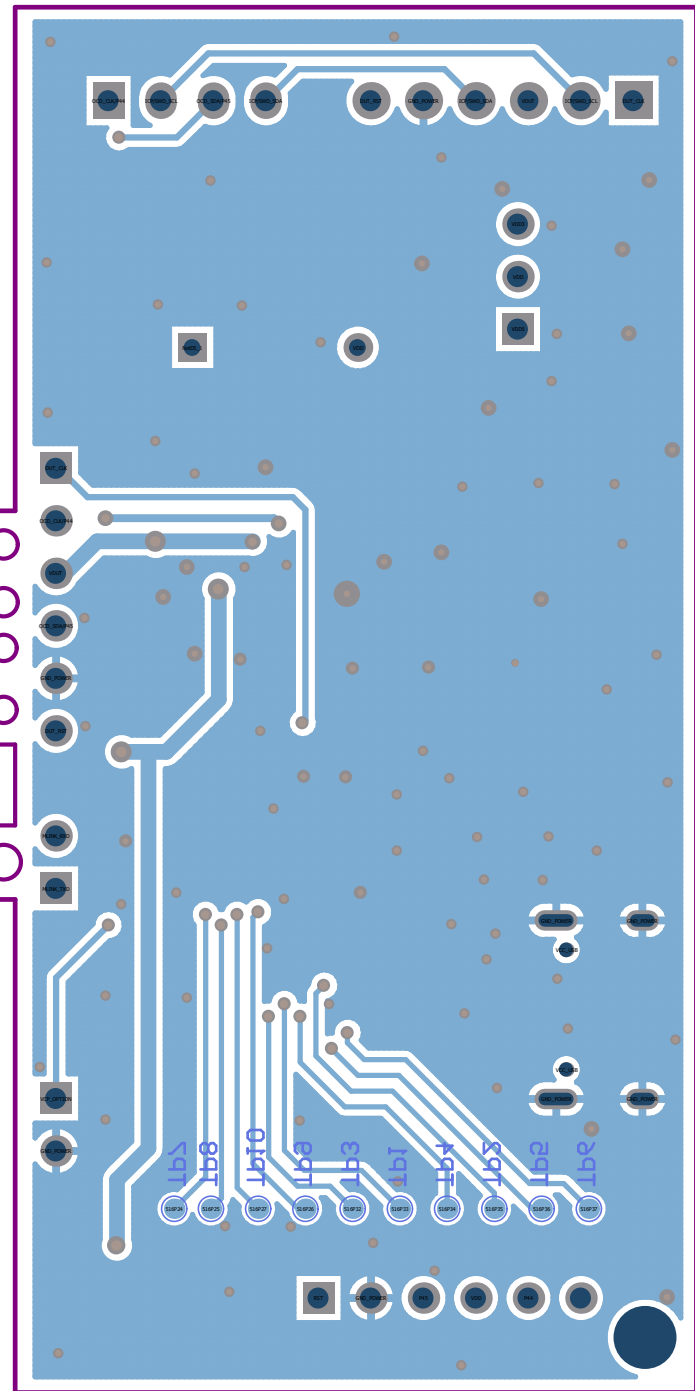
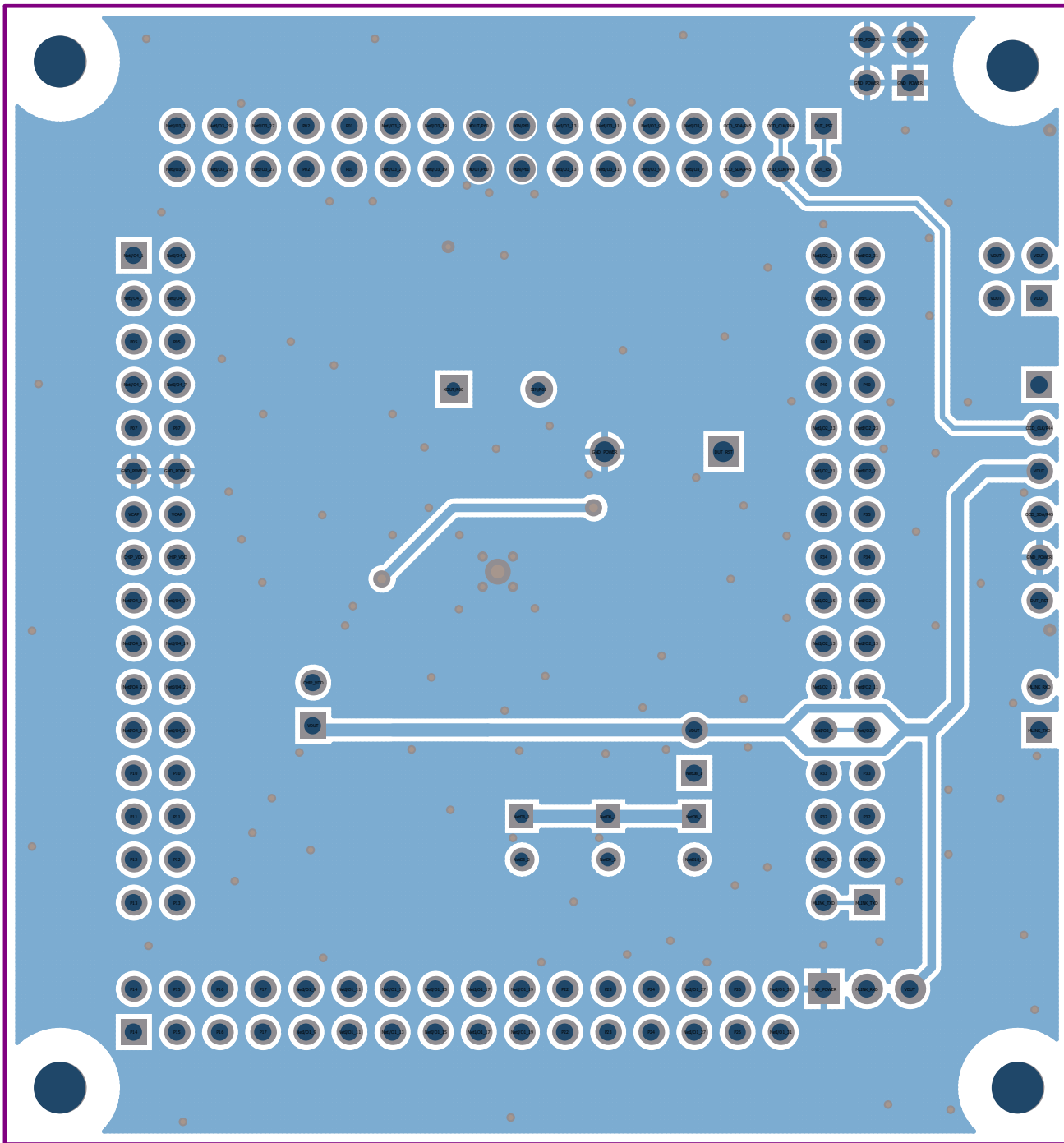
1		2		3		4	
A	<div>2024-01-19</div> <div>TH249A MGEQ1C064AD48 LQFP48 EVB &gt;&gt;&gt; TH253A_MG82F6P32_LQFP32_EV_V10</div>						A
	<div>2024-01-22</div> <div>sch--1_MLink_V11 &gt;&gt;&gt; 1_MLink_V12 MICRO_USB &gt;&gt; TYPE-C 母座 12pin</div>						
	<div>2024-02-02</div> <div>TH253A_MG82F6P32_LQFP32_EV_V10 &gt;&gt;&gt; V11</div> <div>sch--1_MLink_V12 &gt;&gt;&gt; 1_MLink_V13</div> <div>J1 TYPE-C 母座 12pin pin B6 NET "D+", pin B7 NET "D-"</div> <div>U5-8, R56-1 net P25 &gt;&gt;&gt; P26</div> <div>add net P26 &gt;&gt;&gt; I/O 1 -pin 29,30</div>						
B							B
C							C
D							D
1		2		3		4	

Title			
Size	Number		Revision
A4			
Date:	2024/4/1		Sheet of
File:	D:\DXP\.\TH253A NOTE.SchDoc		Drawn By:

67.00mm

97.00mm





67.00mm

97.00mm



TH253A  
MG82F6P32\_LQFP32\_QFN32\_EV\_V11

2024.02

RESET

U5 current measurement

When J16 Open, SW1 must be off.

Power Off Power On

J3  
Open Disable VCP.  
Short Enable VCP.

