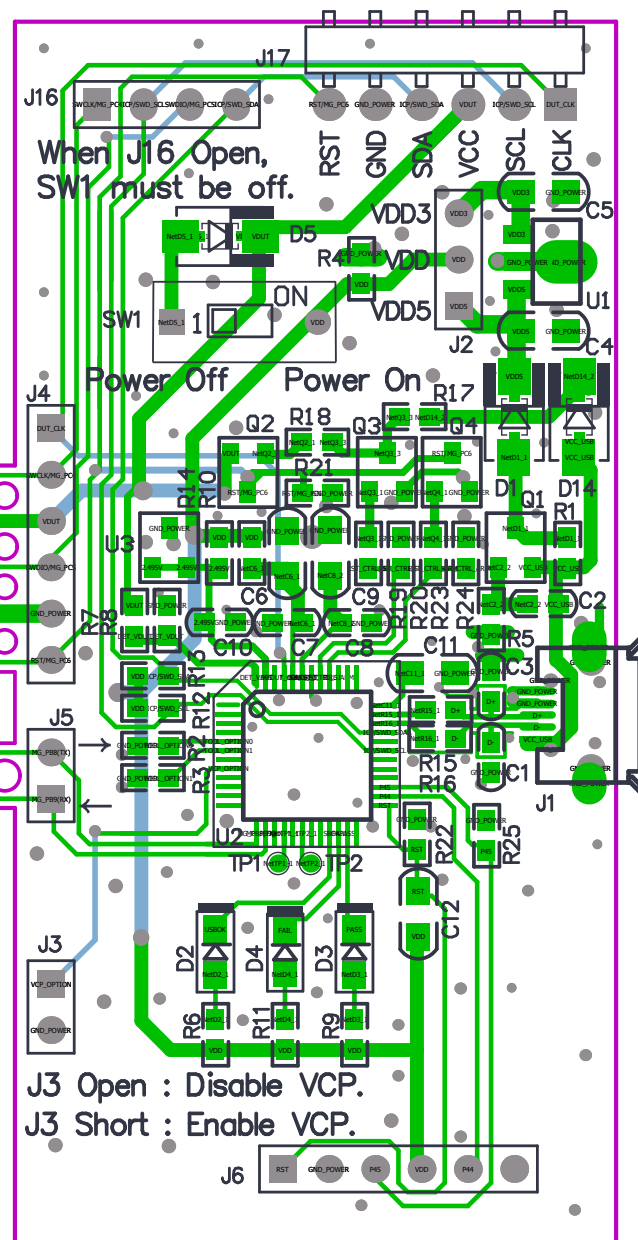
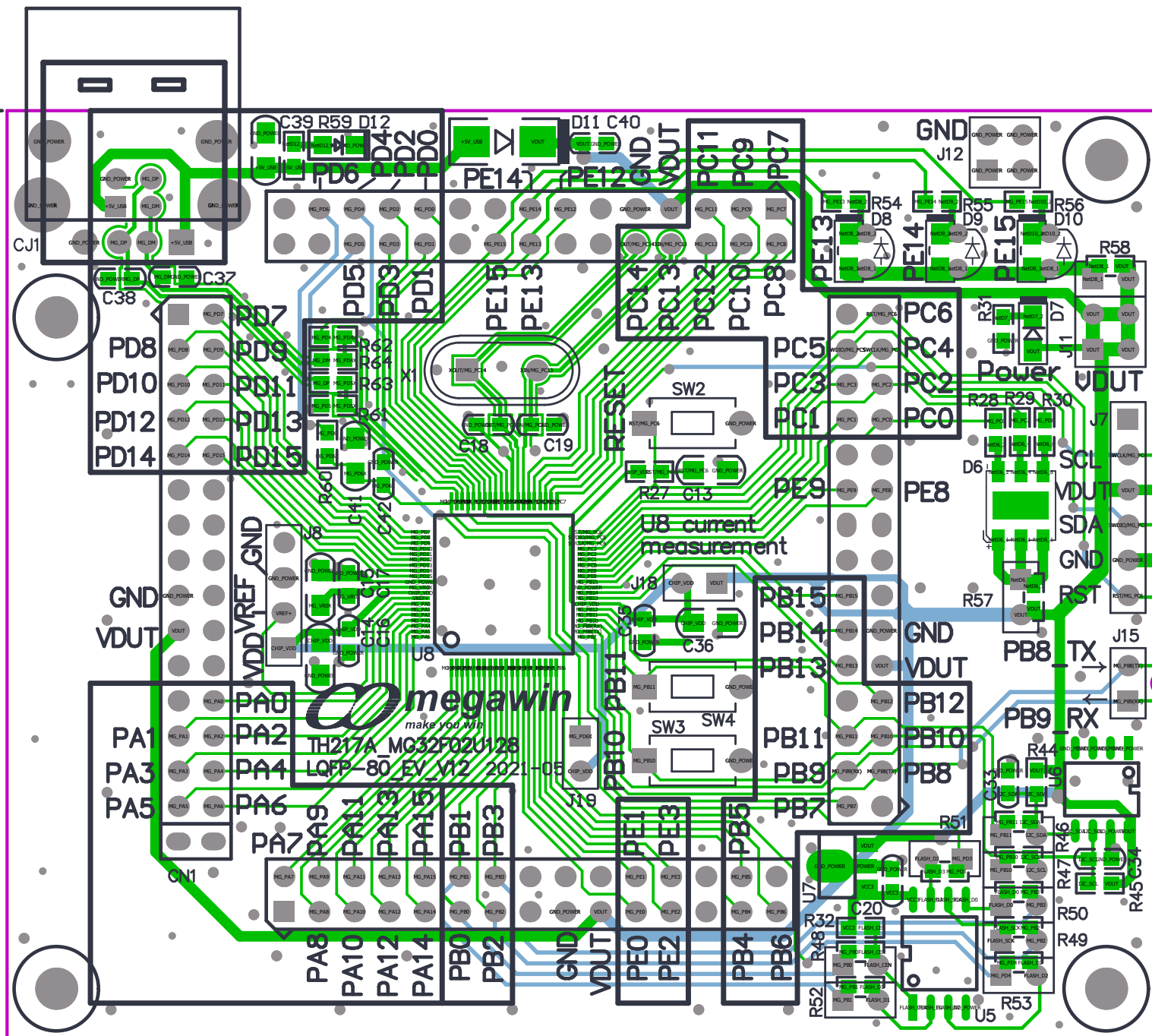


67.00mm

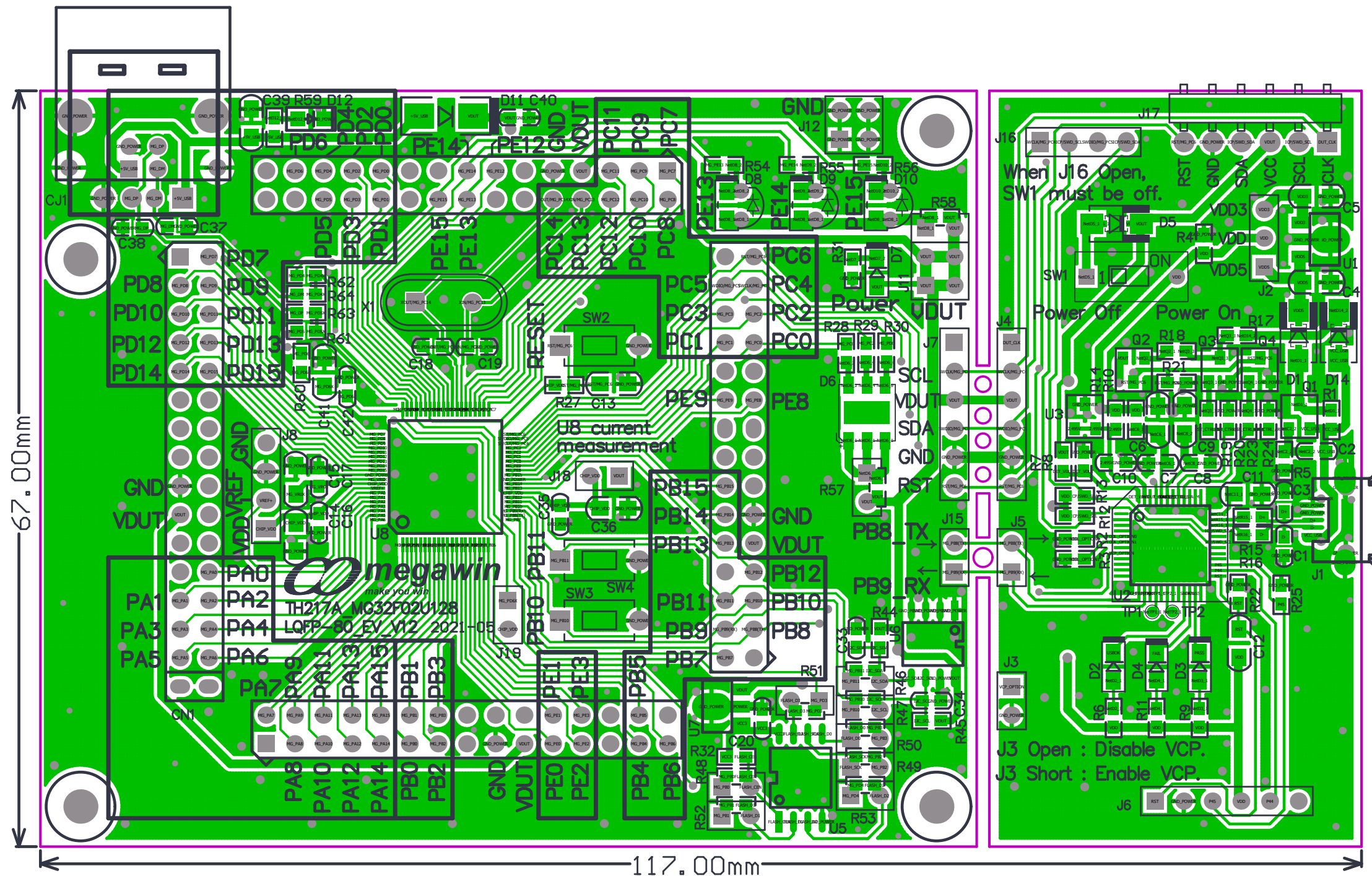


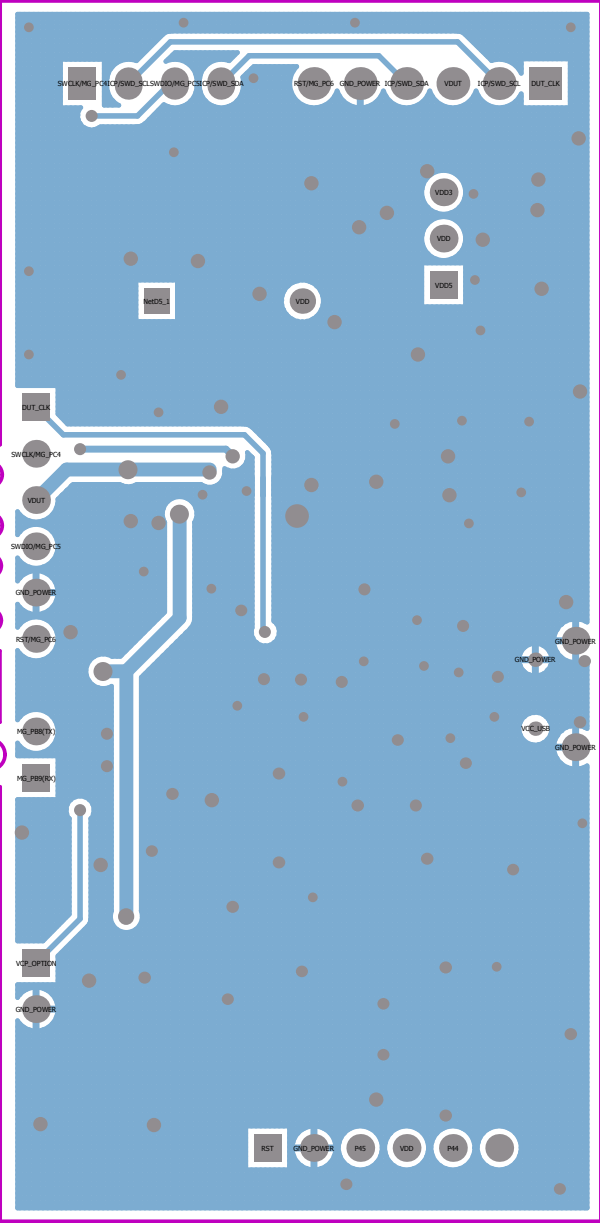
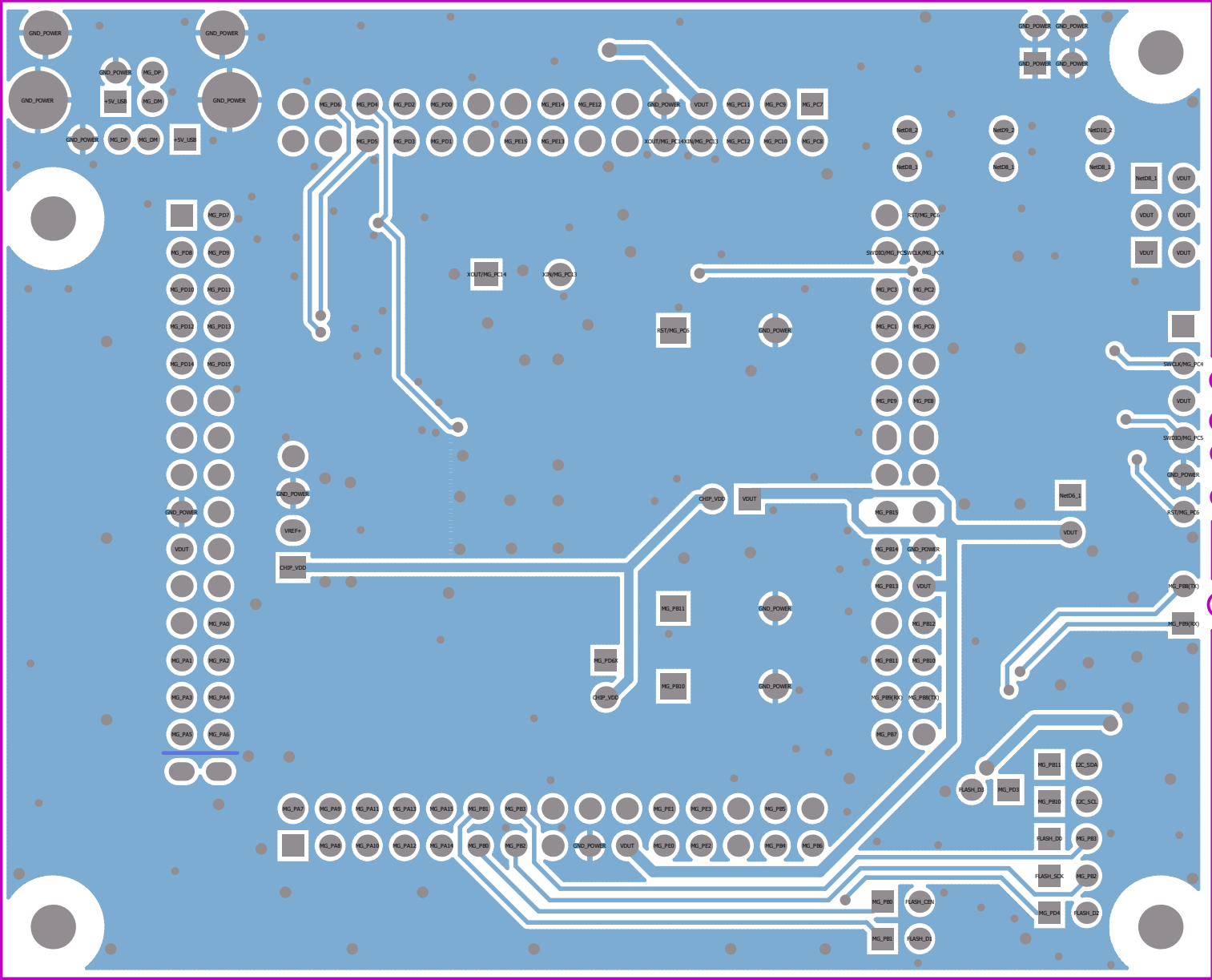
When J16 Open, SW1 must be off.

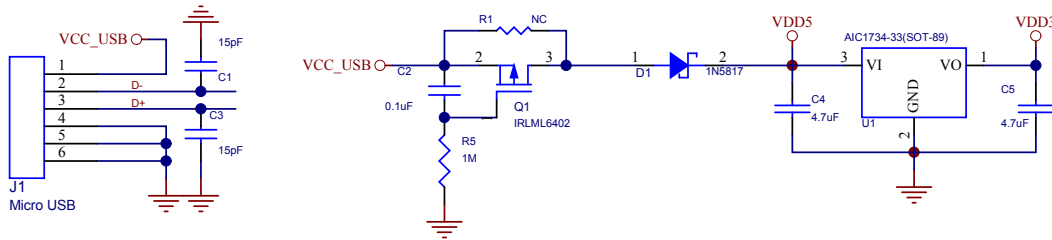
Power Off Power On

J3 Open : Disable VCP.
J3 Short : Enable VCP.

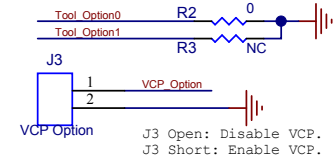
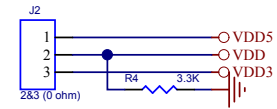
117.00mm



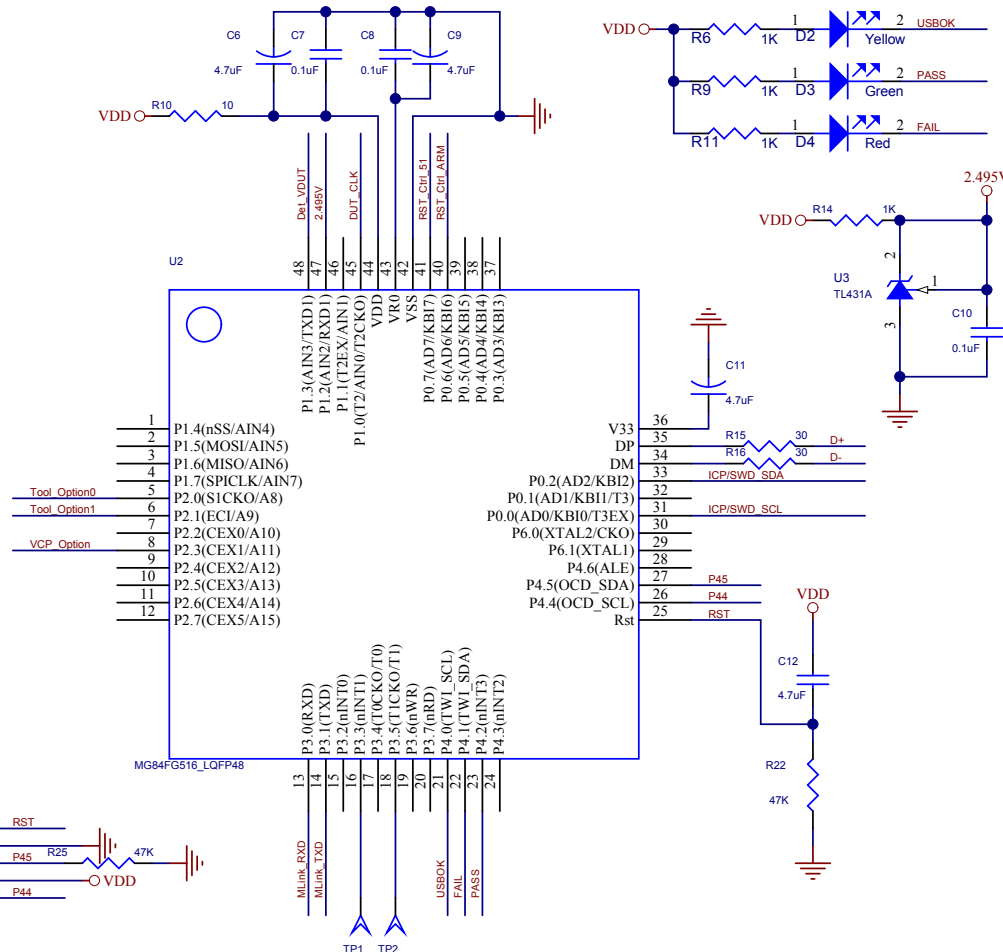




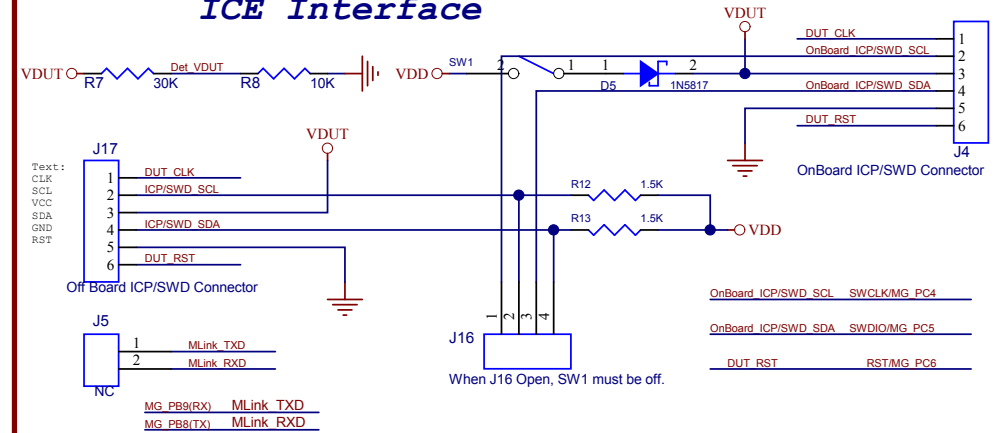
Tool Option



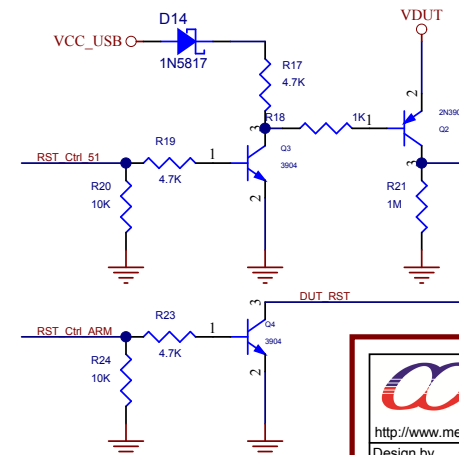
Main MCU



ICE Interface



RST Pin Ctrl



1

2

3

4

A

A

2020-01-20

TH217A_V10 >>>> TH217A_V11

TH217A_MG32F02U064_128_LQFP-80_EV_V10

TH217A_MG32F02U128_LQFP-80_EV_V11

2021-05-10

TH217A_MG32F02U128_LQFP-80_EV_V11>>> TTH217A_MG32F02U128_LQFP-80_EV_V12

add D14 -- IN5817(SMA & SOD323)

change D1, D5 IN5817 footprint >>>(SMA & SOD323) duple lay

change C4,C5,C6,C9,C11,C12,,,C13,C14,C15,C36,C41 4.7uF footprint 0603C >>> 0805C

B

B

C

C

D

D

Title		
Size	Number	Revision
A4		
Date:	2021/5/12	Sheet of
File:	D:\DXP\...\TH217A NOTE.SchDoc	Drawn By:

1

2

3

4